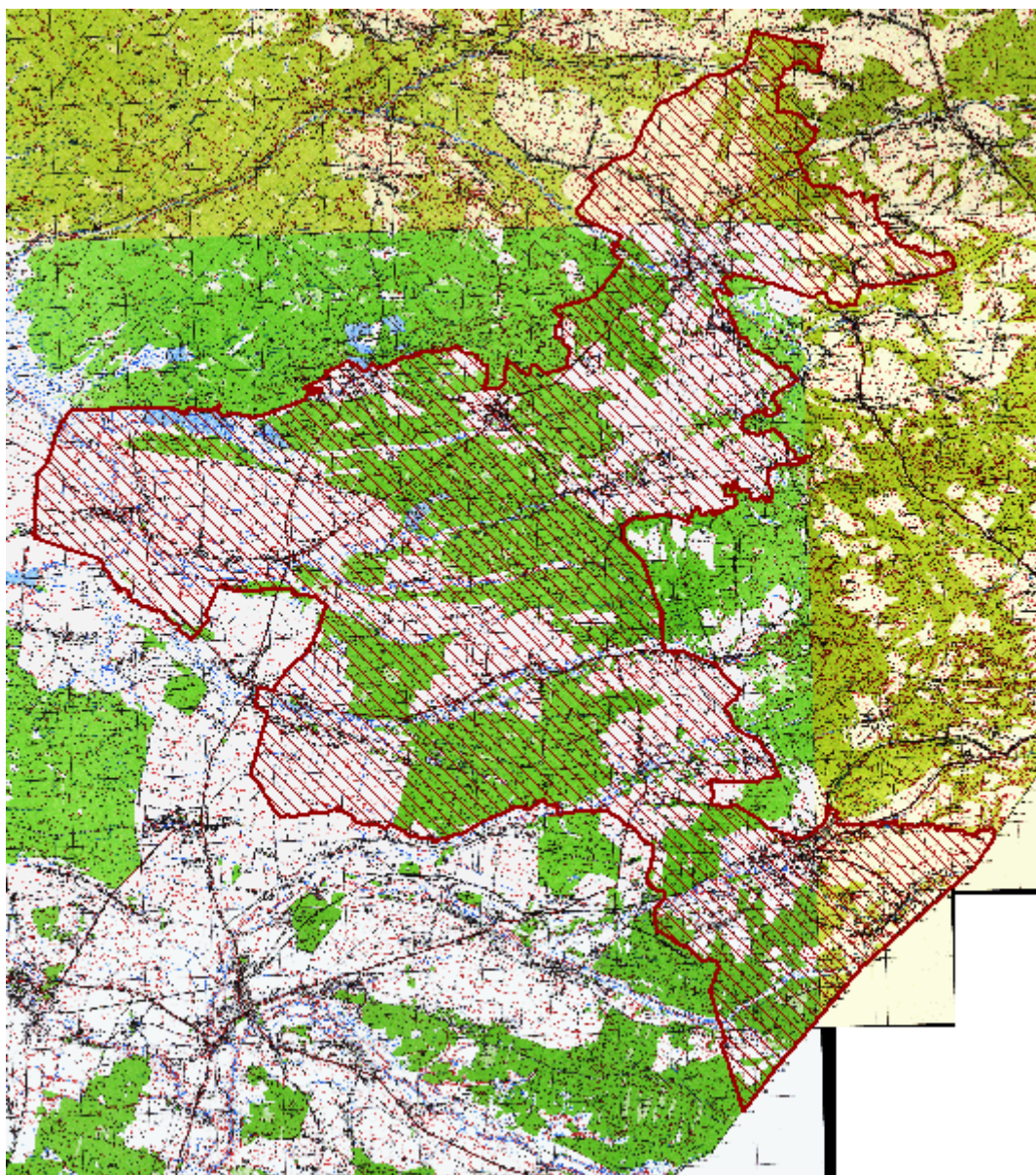


ZAŁĄCZNIK NR.1

MAPA POGLĄDOWA USYTUOWANIA ROZTOCZAŃSKIEGO OBSZARU CHRONIONEGO KRAJOBRAZU



Mapa topograficzna w skali 1: 50 000 oraz plik wektorowy w formacie ESRI Shapefile w układzie PUWG_92, stanowiący graficzne przedstawienie punktów załamania granicy, dostępne w Departamencie Ochrony Środowiska Urzędu Marszałkowskiego Województwa Podkarpackiego w Rzeszowie.

Załącznik Nr 2

Tekstowy opis granic Roztoczańskiego Obszaru Chronionego Krajobrazu

1. Ilekroć w opisie granicy jest mowa o „punkcie Nr...” należy przez to rozumieć punkt załamania granicy o współrzędnych wykazanych w załączniku nr 3.

2. Granica Obszaru rozpoczyna się w miejscu przecięcia się granicy administracyjnej między gminami Obsza (woj. lubelskie) i Cieszanów (woj. podkarpackie) z granicą Parku Krajobrazowego Puszczy Solskiej (punkt Nr 1) i biegnie linią ciągłą, kolejnymi, opisanymi niżej, odcinkami:

- 1) w kierunku północno-wschodnim wzdłuż południowej granicy tego Parku do skrzyżowania drogi powiatowej granica województwa – Narol Wieś oraz gminnej Podlesina-Paary (punkt Nr 604)
- 2) w kierunku północno - wschodnim a następnie południowo-wschodnim północną granicą administracyjną gminy Narol do miejsca styku z północną granicą Południworoztoczańskiego Parku Krajobrazowego (miejsce przecięcia się drogi powiatowej Łukawica – Chlewiska w miejscowości Chlewiska z granicą administracyjną województwa),(punkt Nr 1029), z zastrzeżeniem pkt.3,
- 3) w kierunku zachodnim, potem południowym i wschodnim, zachodnią i południową granicą Południworoztoczańskiego Parku Krajobrazowego do przecięcia z granicą państwową w okolicach punktu granicznego nr 652 (punkt Nr 2300),
- 4) w kierunku południowo-zachodnim granicą państwową do okolic punktu granicznego nr 632 (punkt Nr 2319), z zastrzeżeniem pkt. 4,
- 5) w kierunku północno-zachodnim terenami leśnymi i rolnymi oraz drogami lokalnymi do południowej granicy administracyjnej gminy Horyniec(punkt Nr 2338),
- 6) w kierunku północno-zachodnim i zachodnim, południowymi granicami gminy Horyniec (do punktu Nr 2597) i Gminy Cieszanów (do punktu Nr 2780), z zastrzeżeniem pkt.5, drogami polnymi i terenami rolnymi do granic administracyjnych Miasta Cieszanów (punkt Nr 2811),
- 7) w kierunku północno-zachodnim wzdłuż granic administracyjnych miejscowości: Cieszanów (granicą wschodnią, północną i północno-zachodnią), Folwarki (północną), Nowy Lubliniec (południową), z zastrzeżeniem pkt.6, do miejsca przecięcia z rzeką Brusienka (punkt Nr 3052),
- 8) w kierunku północno-zachodnim rzeką Brusienka, rowem melioracyjnym , terenami rolnymi do przysiółka Stary Lubliniec-Osiedle (punkt Nr 3135),
- 9) w kierunku północno-zachodnim a następnie północnym drogami lokalnymi do granicy administracyjnej Gminy Cieszanów (punkt Nr 3158),
- 10) w kierunku północno - wschodnim granicą gminy Cieszanów do miejsca przecięcia się z południową granicą Parku Krajobrazowego Puszczy Solskiej skąd rozpoczęto opis granicy, z zastrzeżeniem pkt.7.

3. W przypadku rozbieżności między przebiegiem granicy Obszaru wyznaczonym punktami jej załamania, pomiędzy punktem Nr 604 i punktem Nr 1029, a faktycznym przebiegiem północnej granicy administracyjnej Gminy Narol, za prawidłowy przebieg granicy Obszaru należy uznać granicę administracyjną Gminy Narol.

4. W przypadku rozbieżności między przebiegiem granicy Obszaru wyznaczonym punktami jej załamania, pomiędzy punktem Nr 2300 i punktem Nr 2319, a faktycznym przebiegiem wschodniej granicy państwowej, za prawidłowy przebieg granicy Obszaru należy uznać granicę państwową.

5. W przypadku rozbieżności między przebiegiem granicy Obszaru wyznaczonym punktami jej załamania, pomiędzy punktem Nr 2338 i punktem Nr 2780, a faktycznym przebiegiem południowej granicy administracyjnej gmin: Horyniec Zdrój i Cieszanów, za prawidłowy przebieg granicy Obszaru należy uznać granicę administracyjną ww. gmin.

6. W przypadku rozbieżności między przebiegiem granicy Obszaru wyznaczonym punktami jej załamania, pomiędzy punktem Nr 2811 i punktem Nr 3052, a faktycznym przebiegiem granic administracyjnych miejscowości : Cieszanów, Folwarki i Nowy Lubliniec, za prawidłowy przebieg granicy Obszaru należy uznać granice administracyjne ww. miejscowości.

7. W przypadku rozbieżności między przebiegiem granicy Obszaru wyznaczonym punktami jej załamania, pomiędzy punktem Nr 3158, punktem Nr 3184 i punktem Nr 1 a faktycznym przebiegiem zachodniej granicy administracyjnej Gminy Cieszanów, za prawidłowy przebieg granicy Obszaru należy uznać granicę administracyjną Gminy Cieszanów.

Współrzędne punktów załamania granicy Roztoczańskiego Obszaru Chronionego Krajobrazu

Nr pkt.	Współrzędne punktów załamania granicy w układzie WGS84
0	50.319250 , 23.065152
1	50.319657 , 23.065699
2	50.319656 , 23.065734
3	50.319644 , 23.067528
4	50.319620 , 23.069456
5	50.319607 , 23.070491
6	50.319567 , 23.075043
7	50.319548 , 23.076544
8	50.319514 , 23.080626
9	50.319513 , 23.081596
10	50.319505 , 23.082259
11	50.319492 , 23.083404
12	50.319482 , 23.084533
13	50.319475 , 23.085851
14	50.319460 , 23.087221
15	50.319443 , 23.088550
16	50.319429 , 23.090602
17	50.319402 , 23.091966
18	50.319408 , 23.092938
19	50.319403 , 23.093634
20	50.319377 , 23.097200
21	50.319356 , 23.098808
22	50.319330 , 23.099044
23	50.319200 , 23.100752
24	50.318923 , 23.104326
25	50.318848 , 23.105293
26	50.318811 , 23.105676
27	50.318696 , 23.107184
28	50.318439 , 23.110353
29	50.317917 , 23.110245
30	50.317739 , 23.112324
31	50.317128 , 23.112964
32	50.317153 , 23.113015
33	50.317315 , 23.114366
34	50.318190 , 23.114027
35	50.318439 , 23.114085
36	50.318414 , 23.115970
37	50.318367 , 23.116421
38	50.318216 , 23.117820
39	50.318017 , 23.119410
40	50.317984 , 23.119759

Nr pkt.	Współrzędne punktów załamania granicy w układzie WGS84
41	50.317870 , 23.120985
42	50.317854 , 23.122775
43	50.317978 , 23.124774
44	50.318092 , 23.124785
45	50.318191 , 23.125999
46	50.318305 , 23.126660
47	50.319148 , 23.128033
48	50.318678 , 23.128116
49	50.317471 , 23.126206
50	50.316201 , 23.128499
51	50.316233 , 23.129748
52	50.316276 , 23.130892
53	50.316320 , 23.131063
54	50.316430 , 23.131483
55	50.316703 , 23.132708
56	50.316290 , 23.133511
57	50.316187 , 23.134435
58	50.316119 , 23.135287
59	50.316023 , 23.136251
60	50.315837 , 23.138493
61	50.315666 , 23.140385
62	50.315090 , 23.140119
63	50.315090 , 23.141020
64	50.315124 , 23.141407
65	50.315163 , 23.141679
66	50.315327 , 23.142327
67	50.315339 , 23.142387
68	50.315416 , 23.142772
69	50.315429 , 23.142965
70	50.315396 , 23.143431
71	50.315435 , 23.143752
72	50.315515 , 23.144140
73	50.315634 , 23.144732
74	50.315588 , 23.144772
75	50.315535 , 23.144891
76	50.315435 , 23.145016
77	50.315463 , 23.145288
78	50.315636 , 23.145859
79	50.315707 , 23.145935
80	50.315798 , 23.146499
81	50.315860 , 23.146852

Nr pkt.	Współrzędne punktów załamania granicy w układzie WGS84
82	50.315981 , 23.147513
83	50.316039 , 23.147798
84	50.316086 , 23.148117
85	50.316259 , 23.148901
86	50.316366 , 23.149390
87	50.316525 , 23.150249
88	50.316839 , 23.151835
89	50.317060 , 23.153025
90	50.317189 , 23.153631
91	50.317353 , 23.154478
92	50.317427 , 23.154894
93	50.317718 , 23.156256
94	50.318106 , 23.158200
95	50.318221 , 23.158731
96	50.318333 , 23.159298
97	50.318475 , 23.159996
98	50.318722 , 23.161386
99	50.318977 , 23.162333
100	50.318990 , 23.162423
101	50.319056 , 23.162736
102	50.318977 , 23.162815
103	50.318975 , 23.162954
104	50.319090 , 23.163090
105	50.319142 , 23.163424
106	50.319181 , 23.163633
107	50.319235 , 23.163562
108	50.319272 , 23.163717
109	50.319326 , 23.163861
110	50.319359 , 23.163910
111	50.319643 , 23.163780
112	50.320068 , 23.163607
113	50.320212 , 23.164048
114	50.320244 , 23.164408
115	50.320273 , 23.164668
116	50.320310 , 23.165043
117	50.320405 , 23.165884
118	50.320454 , 23.166192
119	50.320490 , 23.166367
120	50.320580 , 23.166888
121	50.320801 , 23.168106
122	50.320826 , 23.168221

Nr pkt.	Współrzędne punktów załamania granicy w układzie WGS84
123	50.320878 , 23.168636
124	50.320899 , 23.168892
125	50.320903 , 23.169009
126	50.320912 , 23.169302
127	50.320961 , 23.169459
128	50.320972 , 23.169527
129	50.321021 , 23.169684
130	50.321169 , 23.169952
131	50.321552 , 23.170638
132	50.321616 , 23.170439
133	50.321632 , 23.170366
134	50.321761 , 23.170087
135	50.321741 , 23.169919
136	50.321689 , 23.169087
137	50.321686 , 23.168932
138	50.321712 , 23.168656
139	50.321835 , 23.167456
140	50.321848 , 23.167286
141	50.321753 , 23.167283
142	50.321757 , 23.166955
143	50.321723 , 23.166117
144	50.321736 , 23.165735
145	50.321881 , 23.165574
146	50.321634 , 23.164439
147	50.321792 , 23.164341
148	50.321950 , 23.164214
149	50.322066 , 23.164090
150	50.321910 , 23.163305
151	50.322217 , 23.163136
152	50.322320 , 23.163108
153	50.322325 , 23.163512
154	50.322360 , 23.163815
155	50.322357 , 23.163904
156	50.322415 , 23.164236
157	50.322483 , 23.164353
158	50.322565 , 23.164399
159	50.322586 , 23.164464
160	50.322619 , 23.164665
161	50.322650 , 23.164842
162	50.322699 , 23.165040
163	50.322723 , 23.165101

Nr pkt.	Współrzędne punktów załamania granicy w układzie WGS84	
164	50.322845	23.165386
165	50.322872	23.165382
166	50.322930	23.165504
167	50.322958	23.165588
168	50.322987	23.165843
169	50.323026	23.166217
170	50.323088	23.166232
171	50.323164	23.166471
172	50.323232	23.166729
173	50.323266	23.166947
174	50.323376	23.167290
175	50.323449	23.167583
176	50.323422	23.167879
177	50.323730	23.168793
178	50.323778	23.168969
179	50.323822	23.169083
180	50.323925	23.169403
181	50.324152	23.170127
182	50.324233	23.170385
183	50.324663	23.171691
184	50.324788	23.172091
185	50.324871	23.172326
186	50.325095	23.172238
187	50.325375	23.173109
188	50.325527	23.173388
189	50.325568	23.173224
190	50.325682	23.173222
191	50.325688	23.172903
192	50.325834	23.172889
193	50.325836	23.172546
194	50.326183	23.172446
195	50.326462	23.172466
196	50.326581	23.173133
197	50.326531	23.173692
198	50.326498	23.174057
199	50.326726	23.174974
200	50.327016	23.176160
201	50.327261	23.177178
202	50.327361	23.178331
203	50.327412	23.178306
204	50.327491	23.178283
205	50.327527	23.178536
206	50.327665	23.178987
207	50.327674	23.179048
208	50.327757	23.179400
209	50.327674	23.179443

Nr pkt.	Współrzędne punktów załamania granicy w układzie WGS84	
210	50.327724	23.179635
211	50.327796	23.179740
212	50.327970	23.180017
213	50.327999	23.180106
214	50.328091	23.180457
215	50.328119	23.180379
216	50.328757	23.180605
217	50.328660	23.180778
218	50.328668	23.181800
219	50.328207	23.183269
220	50.327839	23.184370
221	50.327504	23.184995
222	50.327489	23.185134
223	50.326946	23.186109
224	50.326582	23.186760
225	50.326464	23.186640
226	50.326465	23.186782
227	50.326407	23.186847
228	50.326181	23.187386
229	50.326166	23.187591
230	50.326140	23.187697
231	50.326098	23.187920
232	50.325982	23.188160
233	50.325932	23.188195
234	50.325840	23.188376
235	50.325523	23.189048
236	50.326161	23.189856
237	50.326691	23.190507
238	50.327719	23.191766
239	50.327800	23.191780
240	50.327832	23.191809
241	50.327036	23.193218
242	50.326937	23.193335
243	50.326639	23.193715
244	50.326256	23.194273
245	50.326348	23.194636
246	50.326471	23.195077
247	50.326545	23.195488
248	50.326823	23.196099
249	50.326810	23.196309
250	50.326763	23.196770
251	50.326884	23.197353
252	50.327167	23.198520
253	50.327228	23.198660
254	50.327287	23.199031
255	50.327186	23.199061

Nr pkt.	Współrzędne punktów załamania granicy w układzie WGS84	
256	50.327290	23.199550
257	50.327359	23.200028
258	50.327483	23.200860
259	50.327545	23.201268
260	50.327808	23.201164
261	50.327924	23.200882
262	50.328200	23.201229
263	50.328277	23.201785
264	50.328217	23.202303
265	50.328316	23.202931
266	50.328452	23.202996
267	50.328490	23.203603
268	50.328687	23.203741
269	50.328762	23.203954
270	50.328787	23.204831
271	50.328956	23.205145
272	50.329035	23.205354
273	50.329094	23.205607
274	50.329063	23.206524
275	50.329021	23.206567
276	50.329089	23.207747
277	50.329000	23.208233
278	50.328980	23.208946
279	50.328908	23.209309
280	50.329032	23.210007
281	50.329058	23.210141
282	50.329336	23.210084
283	50.329347	23.210125
284	50.329715	23.210151
285	50.329774	23.210201
286	50.329414	23.210946
287	50.329442	23.211334
288	50.329561	23.211516
289	50.329652	23.212026
290	50.329724	23.212421
291	50.329830	23.212705
292	50.329910	23.213297
293	50.330083	23.213520
294	50.330096	23.214004
295	50.330076	23.215084
296	50.330035	23.215380
297	50.330167	23.215509
298	50.330042	23.215643
299	50.330084	23.215995
300	50.329927	23.216155
301	50.330091	23.216747

Nr pkt.	Współrzędne punktów załamania granicy w układzie WGS84	
302	50.330121	23.217056
303	50.330036	23.218285
304	50.330047	23.218427
305	50.330016	23.218504
306	50.329975	23.219068
307	50.329882	23.219978
308	50.329914	23.220264
309	50.330089	23.220636
310	50.330253	23.221044
311	50.330235	23.221125
312	50.330238	23.221351
313	50.330334	23.221445
314	50.330390	23.221642
315	50.330408	23.221812
316	50.330467	23.221881
317	50.330544	23.222137
318	50.330450	23.222498
319	50.330436	23.222840
320	50.330379	23.223319
321	50.330450	23.223651
322	50.330386	23.223803
323	50.330399	23.223860
324	50.330431	23.224029
325	50.330451	23.224271
326	50.330521	23.224598
327	50.330510	23.224810
328	50.330563	23.224994
329	50.330624	23.225247
330	50.330585	23.225433
331	50.330694	23.225579
332	50.330666	23.225786
333	50.330625	23.225784
334	50.330621	23.225915
335	50.330655	23.225996
336	50.330724	23.225995
337	50.330918	23.226554
338	50.331078	23.227143
339	50.330958	23.227374
340	50.330932	23.227966
341	50.330851	23.228342
342	50.330757	23.228499
343	50.330798	23.228629
344	50.330769	23.228684
345	50.330731	23.228785
346	50.330596	23.228851
347	50.329800	23.229242

Nr pkt.	Współrzędne punktów załamania granicy w układzie WGS84	
348	50.329693	23.229316
349	50.329692	23.229461
350	50.329699	23.229595
351	50.329640	23.229703
352	50.329586	23.229847
353	50.329495	23.229969
354	50.329410	23.230121
355	50.329301	23.230338
356	50.329257	23.230436
357	50.329154	23.230765
358	50.329128	23.230902
359	50.329109	23.231119
360	50.329113	23.232012
361	50.329151	23.232154
362	50.329159	23.232280
363	50.329127	23.232532
364	50.329074	23.232826
365	50.329038	23.233107
366	50.329018	23.233336
367	50.328986	23.233340
368	50.328613	23.234344
369	50.328370	23.235030
370	50.328232	23.235168
371	50.328014	23.235745
372	50.327902	23.236107
373	50.327143	23.235131
374	50.327021	23.235571
375	50.327040	23.236307
376	50.326649	23.237632
377	50.325482	23.237636
378	50.325700	23.239958
379	50.324633	23.239748
380	50.324197	23.239638
381	50.322977	23.239286
382	50.321717	23.238930
383	50.320962	23.238954
384	50.320032	23.238643
385	50.320000	23.237828
386	50.319218	23.237603
387	50.319127	23.237928
388	50.319244	23.238896
389	50.319289	23.239423
390	50.319414	23.240894
391	50.318851	23.242908
392	50.319406	23.244035
393	50.319398	23.244179

Nr pkt.	Współrzędne punktów załamania granicy w układzie WGS84	
394	50.319243	23.244506
395	50.320204	23.246107
396	50.320416	23.246287
397	50.321361	23.246784
398	50.322305	23.246698
399	50.322692	23.246813
400	50.323422	23.247043
401	50.323903	23.247208
402	50.324741	23.247486
403	50.325108	23.247544
404	50.325553	23.247619
405	50.326914	23.247687
406	50.326148	23.249043
407	50.324860	23.251321
408	50.323585	23.253575
409	50.322026	23.256339
410	50.322688	23.257073
411	50.323903	23.257404
412	50.324309	23.257829
413	50.325269	23.258836
414	50.324294	23.260498
415	50.322169	23.264145
416	50.322407	23.264704
417	50.322534	23.265251
418	50.322689	23.265875
419	50.322917	23.267231
420	50.323161	23.268903
421	50.323179	23.270112
422	50.323376	23.271053
423	50.323771	23.272754
424	50.323946	23.273168
425	50.324755	23.273215
426	50.325261	23.273246
427	50.326259	23.273302
428	50.326353	23.273320
429	50.326823	23.273919
430	50.327814	23.274024
431	50.328262	23.274059
432	50.329379	23.274147
433	50.329404	23.273743
434	50.329516	23.272087
435	50.330388	23.272161
436	50.330734	23.271502
437	50.331345	23.271591
438	50.331611	23.270221
439	50.331907	23.268681

Nr pkt.	Współrzędne punktów załamania granicy w układzie WGS84	
440	50.332336	23.268706
441	50.334801	23.268863
442	50.334699	23.270924
443	50.336511	23.271071
444	50.336703	23.272362
445	50.336888	23.272047
446	50.337470	23.271074
447	50.337879	23.270380
448	50.339212	23.268163
449	50.339357	23.268715
450	50.339740	23.269841
451	50.339896	23.270156
452	50.340161	23.270902
453	50.340201	23.271099
454	50.340228	23.271284
455	50.340244	23.271450
456	50.340251	23.271713
457	50.340200	23.272445
458	50.340230	23.272909
459	50.340289	23.273439
460	50.340302	23.273767
461	50.340280	23.274173
462	50.340277	23.274450
463	50.340293	23.274613
464	50.340338	23.274874
465	50.340479	23.275333
466	50.340576	23.275545
467	50.340693	23.275833
468	50.340755	23.276050
469	50.340831	23.276450
470	50.340991	23.276989
471	50.341029	23.277264
472	50.340827	23.279002
473	50.340936	23.279300
474	50.341045	23.279411
475	50.341161	23.280052
476	50.341317	23.280905
477	50.341494	23.282065
478	50.341510	23.282582
479	50.341594	23.283216
480	50.341743	23.283800
481	50.341856	23.284234
482	50.342173	23.285182
483	50.342445	23.285809
484	50.342760	23.286552
485	50.342904	23.286963

Nr pkt.	Współrzędne punktów załamania granicy w układzie WGS84	
486	50.343175	23.287348
487	50.349839	23.296720
488	50.349892	23.296760
489	50.350075	23.296919
490	50.350709	23.297532
491	50.350811	23.297681
492	50.351520	23.298183
493	50.351651	23.297828
494	50.351781	23.297402
495	50.351948	23.296871
496	50.352111	23.296409
497	50.352255	23.296079
498	50.352407	23.295813
499	50.352569	23.295572
500	50.352769	23.295325
501	50.353006	23.295128
502	50.353234	23.294992
503	50.353817	23.294729
504	50.354439	23.294482
505	50.354591	23.294704
506	50.354589	23.294780
507	50.354644	23.294840
508	50.354756	23.294905
509	50.355050	23.294868
510	50.355268	23.294867
511	50.355359	23.294832
512	50.355479	23.294919
513	50.355595	23.294717
514	50.356234	23.294760
515	50.356208	23.294851
516	50.356096	23.295104
517	50.355968	23.295421
518	50.355648	23.296260
519	50.355208	23.297311
520	50.355392	23.297276
521	50.355717	23.297150
522	50.356194	23.297045
523	50.356510	23.297127
524	50.356597	23.297185
525	50.356806	23.297457
526	50.357454	23.298334
527	50.357887	23.298887
528	50.357993	23.298498
529	50.358062	23.298256
530	50.358278	23.297594
531	50.358436	23.297093

Nr pkt.	Współrzędne punktów załamania granicy w układzie WGS84	
532	50.358699	23.296314
533	50.358949	23.295514
534	50.359099	23.295042
535	50.359281	23.294446
536	50.359409	23.294068
537	50.359775	23.292899
538	50.359938	23.292361
539	50.360014	23.292149
540	50.360104	23.291857
541	50.360397	23.290940
542	50.360545	23.290449
543	50.360664	23.290104
544	50.360884	23.289408
545	50.361036	23.288941
546	50.361220	23.288328
547	50.361391	23.287822
548	50.361474	23.287596
549	50.361580	23.287274
550	50.361729	23.286745
551	50.361783	23.286577
552	50.361907	23.286236
553	50.361938	23.286125
554	50.362267	23.285275
555	50.362362	23.285064
556	50.362604	23.284453
557	50.362827	23.283826
558	50.362958	23.283518
559	50.363111	23.283235
560	50.363345	23.282835
561	50.363602	23.282393
562	50.363851	23.281973
563	50.364005	23.281693
564	50.364333	23.281123
565	50.364803	23.280337
566	50.364966	23.280052
567	50.365975	23.281427
568	50.366500	23.282104
569	50.367128	23.282901
570	50.367383	23.283270
571	50.367507	23.283417
572	50.367550	23.283482
573	50.368048	23.284188
574	50.368385	23.284687
575	50.368939	23.285457
576	50.369104	23.285681
577	50.369692	23.286465

Nr pkt.	Współrzędne punktów załamania granicy w układzie WGS84	
578	50.369908	23.286780
579	50.370242	23.287255
580	50.370496	23.287661
581	50.370843	23.288188
582	50.371122	23.288641
583	50.371196	23.288757
584	50.371683	23.289481
585	50.372161	23.288642
586	50.372732	23.287752
587	50.373294	23.286857
588	50.373505	23.286551
589	50.373832	23.286066
590	50.373890	23.286175
591	50.374093	23.286660
592	50.374521	23.287680
593	50.375176	23.289279
594	50.375463	23.290031
595	50.375664	23.290642
596	50.375875	23.291428
597	50.375997	23.291850
598	50.376145	23.292494
599	50.376435	23.293477
600	50.376706	23.294273
601	50.376966	23.294865
602	50.376989	23.294747
603	50.377015	23.294281
604	50.376992	23.293870
605	50.377031	23.294148
606	50.377038	23.294289
607	50.377049	23.294418
608	50.377180	23.294424
609	50.377185	23.294505
610	50.377314	23.294964
611	50.377706	23.295929
612	50.377970	23.296327
613	50.378156	23.297086
614	50.378176	23.297224
615	50.378765	23.300435
616	50.379173	23.302438
617	50.379498	23.303794
618	50.379700	23.304470
619	50.379799	23.304786
620	50.380010	23.305279
621	50.380477	23.305739
622	50.380991	23.306113
623	50.381365	23.306330

Nr pkt.	Współrzędne punktów załamania granicy w układzie WGS84	
624	50.382405	23.307034
625	50.383098	23.307496
626	50.383415	23.307858
627	50.383875	23.308389
628	50.384296	23.308865
629	50.384506	23.309096
630	50.384889	23.309298
631	50.385284	23.309408
632	50.385831	23.309650
633	50.387124	23.310922
634	50.387478	23.311334
635	50.387627	23.311542
636	50.388003	23.312112
637	50.388717	23.313117
638	50.389292	23.313936
639	50.389742	23.314386
640	50.390194	23.314836
641	50.390946	23.315445
642	50.391769	23.316102
643	50.392474	23.317197
644	50.392670	23.317579
645	50.392946	23.318784
646	50.393211	23.319837
647	50.393502	23.320469
648	50.393552	23.321714
649	50.393970	23.322811
650	50.394391	23.323776
651	50.394641	23.325092
652	50.394941	23.327165
653	50.395064	23.328006
654	50.395136	23.328160
655	50.395377	23.328678
656	50.395559	23.328993
657	50.395902	23.330504
658	50.396639	23.331658
659	50.396894	23.332274
660	50.397159	23.333034
661	50.397398	23.333518
662	50.397547	23.333819
663	50.398119	23.335172
664	50.398119	23.335172
665	50.398235	23.335455
666	50.398583	23.336660
667	50.398764	23.337295
668	50.399004	23.338035
669	50.399201	23.338658

Nr pkt.	Współrzędne punktów załamania granicy w układzie WGS84	
670	50.399186	23.340430
671	50.399002	23.343020
672	50.399153	23.344466
673	50.399501	23.345991
674	50.399605	23.346334
675	50.399902	23.347108
676	50.400195	23.348018
677	50.400372	23.348808
678	50.400504	23.349280
679	50.400874	23.350336
680	50.401862	23.353527
681	50.402417	23.354332
682	50.403309	23.354814
683	50.404016	23.355367
684	50.404678	23.355642
685	50.405562	23.356005
686	50.406179	23.356299
687	50.406705	23.356546
688	50.406945	23.356631
689	50.407781	23.356918
690	50.408782	23.357380
691	50.410537	23.358150
692	50.410272	23.358873
693	50.409998	23.359623
694	50.409542	23.362187
695	50.409231	23.363929
696	50.408270	23.369292
697	50.408137	23.370025
698	50.407848	23.371528
699	50.407442	23.373680
700	50.407053	23.375234
701	50.407001	23.375439
702	50.406988	23.378227
703	50.406978	23.380308
704	50.406510	23.381174
705	50.406315	23.381532
706	50.406112	23.382693
707	50.405852	23.384207
708	50.405604	23.385999
709	50.405388	23.387580
710	50.405178	23.387385
711	50.404403	23.386662
712	50.403882	23.386265
713	50.402976	23.385687
714	50.401308	23.384938
715	50.401175	23.384899

Nr pkt.	Współrzędne punktów załamania granicy w układzie WGS84	
716	50.400805	23.384789
717	50.400297	23.384641
718	50.400277	23.385050
719	50.400208	23.385428
720	50.399672	23.385277
721	50.399703	23.384458
722	50.399261	23.384472
723	50.399220	23.384245
724	50.398756	23.384122
725	50.398638	23.384818
726	50.398500	23.384719
727	50.398647	23.383580
728	50.398733	23.383073
729	50.399001	23.381508
730	50.399034	23.380807
731	50.399566	23.380808
732	50.400143	23.380801
733	50.400693	23.379299
734	50.400929	23.379043
735	50.401331	23.378094
736	50.401772	23.377293
737	50.401597	23.376909
738	50.401245	23.376268
739	50.401050	23.376014
740	50.401534	23.374377
741	50.401616	23.374010
742	50.401370	23.373937
743	50.401326	23.374156
744	50.400028	23.373581
745	50.399850	23.372868
746	50.399911	23.371969
747	50.399577	23.370663
748	50.399460	23.370193
749	50.399003	23.369991
750	50.398448	23.369646
751	50.397979	23.369208
752	50.397201	23.368061
753	50.397132	23.368259
754	50.396554	23.368742
755	50.396320	23.369037
756	50.396018	23.369438
757	50.395940	23.369711
758	50.394921	23.368233
759	50.394326	23.367392
760	50.393821	23.366713
761	50.393726	23.366337

Nr pkt.	Współrzędne punktów załamania granicy w układzie WGS84	
762	50.393622	23.366085
763	50.393558	23.366130
764	50.393459	23.366426
765	50.393298	23.367197
766	50.393424	23.367295
767	50.391554	23.367124
768	50.390476	23.367041
769	50.390073	23.366669
770	50.389591	23.366296
771	50.389136	23.366284
772	50.388754	23.366154
773	50.388668	23.366876
774	50.388650	23.367356
775	50.388491	23.368684
776	50.388407	23.369086
777	50.388451	23.369397
778	50.388453	23.369634
779	50.388410	23.370324
780	50.388396	23.370897
781	50.388175	23.371920
782	50.387816	23.373520
783	50.387464	23.374949
784	50.387305	23.375400
785	50.386986	23.375715
786	50.386780	23.376162
787	50.386685	23.376315
788	50.386208	23.377300
789	50.385443	23.377616
790	50.385201	23.378122
791	50.385029	23.378263
792	50.384833	23.378059
793	50.384655	23.378557
794	50.384451	23.378335
795	50.384128	23.379607
796	50.383660	23.379706
797	50.383530	23.380072
798	50.383351	23.380955
799	50.383494	23.381102
800	50.383539	23.381623
801	50.383434	23.382165
802	50.383257	23.382759
803	50.382993	23.382491
804	50.382455	23.381987
805	50.381752	23.381373
806	50.381059	23.380848
807	50.380405	23.380334

Nr pkt.	Współrzędne punktów załamania granicy w układzie WGS84	
808	50.380218	23.381710
809	50.380008	23.380458
810	50.379755	23.379643
811	50.379265	23.378729
812	50.378717	23.378016
813	50.378208	23.377484
814	50.377798	23.376575
815	50.377564	23.375210
816	50.377002	23.373898
817	50.376134	23.373762
818	50.375175	23.374230
819	50.374418	23.374648
820	50.373385	23.375145
821	50.373133	23.375254
822	50.373075	23.375293
823	50.372878	23.375382
824	50.372759	23.375752
825	50.372231	23.376259
826	50.371681	23.376879
827	50.370864	23.377282
828	50.370093	23.377505
829	50.369699	23.377673
830	50.368872	23.378217
831	50.368336	23.378940
832	50.368280	23.379568
833	50.368269	23.380025
834	50.368293	23.381010
835	50.368301	23.381367
836	50.368329	23.381852
837	50.368190	23.382043
838	50.367925	23.383339
839	50.367992	23.383682
840	50.367924	23.385148
841	50.367690	23.386152
842	50.367621	23.387062
843	50.367628	23.388640
844	50.367262	23.388950
845	50.367170	23.389468
846	50.367123	23.390062
847	50.367084	23.391494
848	50.366293	23.391641
849	50.366061	23.391852
850	50.366069	23.392608
851	50.365026	23.392912
852	50.365241	23.394722
853	50.365376	23.394718

Nr pkt.	Współrzędne punktów załamania granicy w układzie WGS84	
854	50.365469	23.394740
855	50.365574	23.395038
856	50.365729	23.395462
857	50.365876	23.395867
858	50.365412	23.396303
859	50.365538	23.396698
860	50.365736	23.397321
861	50.365587	23.397458
862	50.365864	23.398092
863	50.366028	23.398472
864	50.365603	23.399052
865	50.365366	23.399407
866	50.365196	23.399574
867	50.364961	23.399694
868	50.364769	23.399738
869	50.364514	23.399746
870	50.364318	23.399866
871	50.363970	23.400145
872	50.363674	23.400315
873	50.363198	23.400444
874	50.362947	23.400296
875	50.362940	23.400555
876	50.363073	23.401034
877	50.363229	23.401596
878	50.363604	23.402639
879	50.363767	23.403088
880	50.363891	23.403527
881	50.364234	23.403342
882	50.364358	23.403694
883	50.364417	23.403858
884	50.364534	23.404345
885	50.364443	23.404569
886	50.364795	23.405307
887	50.364578	23.405585
888	50.364276	23.405783
889	50.364036	23.405019
890	50.363563	23.405206
891	50.363272	23.405283
892	50.363067	23.405338
893	50.363043	23.405083
894	50.362854	23.405144
895	50.362674	23.405194
896	50.362542	23.405197
897	50.362303	23.405156
898	50.362056	23.405164
899	50.361721	23.405195

Nr pkt.	Współrzędne punktów załamania granicy w układzie WGS84	
900	50.361588	23.405087
901	50.361517	23.404912
902	50.361464	23.404377
903	50.361274	23.404420
904	50.360702	23.404372
905	50.360445	23.404422
906	50.360455	23.404912
907	50.360366	23.405382
908	50.360138	23.405315
909	50.359421	23.405310
910	50.359093	23.405302
911	50.358920	23.404885
912	50.358756	23.404596
913	50.358633	23.404397
914	50.358294	23.404389
915	50.358332	23.405240
916	50.358354	23.405684
917	50.357262	23.405667
918	50.357195	23.406816
919	50.357147	23.407887
920	50.357269	23.407913
921	50.357147	23.408754
922	50.357059	23.409208
923	50.357053	23.409465
924	50.357071	23.409599
925	50.356891	23.409578
926	50.356709	23.409511
927	50.356219	23.409229
928	50.355863	23.409026
929	50.355601	23.409802
930	50.355159	23.409479
931	50.354931	23.409307
932	50.354457	23.409056
933	50.354174	23.410032
934	50.354057	23.410448
935	50.353616	23.410033
936	50.353395	23.410609
937	50.352982	23.412044
938	50.352656	23.411915
939	50.352222	23.411630
940	50.351939	23.412826
941	50.351785	23.412626
942	50.351522	23.412479
943	50.351402	23.412982
944	50.351339	23.412956
945	50.351226	23.413558

Nr pkt.	Współrzędne punktów załamania granicy w układzie WGS84	
946	50.351128	23.413671
947	50.351077	23.413838
948	50.351039	23.414165
949	50.351079	23.414728
950	50.351035	23.414990
951	50.350966	23.415217
952	50.350913	23.415517
953	50.350894	23.415868
954	50.350847	23.415863
955	50.350836	23.416330
956	50.350811	23.416638
957	50.350691	23.417236
958	50.350489	23.417833
959	50.350301	23.418133
960	50.350111	23.418224
961	50.350033	23.418833
962	50.350312	23.418894
963	50.350206	23.419508
964	50.350481	23.419819
965	50.350403	23.420602
966	50.350140	23.422011
967	50.349970	23.421936
968	50.349961	23.421967
969	50.349701	23.421757
970	50.349579	23.421690
971	50.349494	23.421642
972	50.349477	23.421732
973	50.349171	23.421677
974	50.349050	23.422284
975	50.349172	23.422319
976	50.348979	23.422996
977	50.348866	23.423044
978	50.348750	23.423163
979	50.348701	23.423281
980	50.348680	23.423367
981	50.348649	23.423565
982	50.348637	23.423722
983	50.348624	23.424191
984	50.348573	23.424443
985	50.348129	23.425179
986	50.348037	23.425573
987	50.348296	23.425753
988	50.348287	23.426073
989	50.348311	23.426525
990	50.348077	23.426370
991	50.347999	23.426662

Nr pkt.	Współrzędne punktów załamania granicy w układzie WGS84	
992	50.347957	23.426820
993	50.347941	23.426989
994	50.347901	23.427359
995	50.347815	23.427787
996	50.347696	23.427742
997	50.347611	23.428163
998	50.347902	23.428354
999	50.347973	23.428606
1000	50.348001	23.428804
1001	50.348064	23.429688
1002	50.348057	23.429962
1003	50.348046	23.430433
1004	50.348043	23.431011
1005	50.348046	23.431167
1006	50.348063	23.431256
1007	50.348205	23.431328
1008	50.348191	23.431625
1009	50.348015	23.431607
1010	50.347743	23.432438
1011	50.347731	23.432940
1012	50.347793	23.433141
1013	50.347821	23.433860
1014	50.347806	23.435048
1015	50.347318	23.435471
1016	50.347265	23.435521
1017	50.347114	23.435715
1018	50.346985	23.435801
1019	50.346870	23.435831
1020	50.346734	23.435820
1021	50.346555	23.435741
1022	50.346318	23.435723
1023	50.346161	23.435769
1024	50.345428	23.436161
1025	50.344981	23.436198
1026	50.344781	23.436152
1027	50.344598	23.435995
1028	50.344524	23.435981
1029	50.344429	23.435959
1030	50.344327	23.435806
1031	50.344300	23.435704
1032	50.343986	23.434684
1033	50.343805	23.434074
1034	50.343592	23.433128
1035	50.343522	23.432846
1036	50.343500	23.432658
1037	50.343461	23.432425

Nr pkt.	Współrzędne punktów załamania granicy w układzie WGS84	
1038	50.343232	23.430732
1039	50.343165	23.430184
1040	50.343099	23.429730
1041	50.342950	23.429207
1042	50.342842	23.428829
1043	50.342755	23.428496
1044	50.342695	23.428297
1045	50.342654	23.428098
1046	50.342617	23.427899
1047	50.342489	23.426337
1048	50.342363	23.424374
1049	50.342213	23.422586
1050	50.342171	23.422072
1051	50.342095	23.421193
1052	50.341995	23.420285
1053	50.341849	23.419423
1054	50.341719	23.418651
1055	50.341673	23.418350
1056	50.341551	23.417661
1057	50.341395	23.416544
1058	50.341373	23.416360
1059	50.341293	23.415832
1060	50.341264	23.415660
1061	50.341164	23.413916
1062	50.341108	23.413216
1063	50.341096	23.411899
1064	50.341101	23.410866
1065	50.341102	23.410208
1066	50.341095	23.409452
1067	50.341024	23.408249
1068	50.340959	23.407111
1069	50.340868	23.406103
1070	50.340819	23.405630
1071	50.340788	23.405094
1072	50.340747	23.404730
1073	50.340698	23.404272
1074	50.340600	23.403490
1075	50.340530	23.402928
1076	50.340511	23.402642
1077	50.340561	23.401356
1078	50.340593	23.400985
1079	50.340628	23.400808
1080	50.340693	23.400568
1081	50.340880	23.399944
1082	50.341146	23.399161
1083	50.341002	23.397992

Nr pkt.	Współrzędne punktów załamania granicy w układzie WGS84
1084	50.340726 , 23.397972
1085	50.340675 , 23.397977
1086	50.340681 , 23.397789
1087	50.340685 , 23.397482
1088	50.340594 , 23.397472
1089	50.340598 , 23.396408
1090	50.340152 , 23.396554
1091	50.339998 , 23.396554
1092	50.339887 , 23.396572
1093	50.339371 , 23.396496
1094	50.339081 , 23.396400
1095	50.338896 , 23.396067
1096	50.338428 , 23.395662
1097	50.337833 , 23.395092
1098	50.336991 , 23.394279
1099	50.336052 , 23.394426
1100	50.336051 , 23.394310
1101	50.335888 , 23.390010
1102	50.335856 , 23.389189
1103	50.335780 , 23.388707
1104	50.335671 , 23.386823
1105	50.336682 , 23.387664
1106	50.336890 , 23.385577
1107	50.336595 , 23.385218
1108	50.336977 , 23.384508
1109	50.336975 , 23.383256
1110	50.337847 , 23.382981
1111	50.338399 , 23.382034
1112	50.338829 , 23.382269
1113	50.339274 , 23.381727
1114	50.339573 , 23.381385
1115	50.339691 , 23.381167
1116	50.340034 , 23.380179
1117	50.339365 , 23.379520
1118	50.339526 , 23.378197
1119	50.338538 , 23.377341
1120	50.338420 , 23.377229
1121	50.338420 , 23.377229
1122	50.338577 , 23.376768
1123	50.338764 , 23.376065
1124	50.338964 , 23.374571
1125	50.339120 , 23.373848
1126	50.339279 , 23.373155
1127	50.339343 , 23.373041
1128	50.339374 , 23.372708
1129	50.339431 , 23.372515

Nr pkt.	Współrzędne punktów załamania granicy w układzie WGS84
1130	50.339567 , 23.371954
1131	50.339602 , 23.371802
1132	50.339704 , 23.371509
1133	50.339835 , 23.371159
1134	50.340322 , 23.369890
1135	50.340374 , 23.369742
1136	50.340434 , 23.369605
1137	50.340630 , 23.369081
1138	50.340763 , 23.368693
1139	50.341017 , 23.367657
1140	50.341231 , 23.366811
1141	50.341259 , 23.366504
1142	50.341278 , 23.366344
1143	50.341312 , 23.366101
1144	50.341323 , 23.365819
1145	50.341344 , 23.365561
1146	50.341448 , 23.364948
1147	50.341550 , 23.364539
1148	50.341632 , 23.364229
1149	50.341879 , 23.363433
1150	50.342362 , 23.362093
1151	50.342614 , 23.361345
1152	50.342876 , 23.359676
1153	50.343004 , 23.358722
1154	50.343147 , 23.357826
1155	50.343288 , 23.357219
1156	50.344014 , 23.354144
1157	50.344403 , 23.352467
1158	50.344641 , 23.351424
1159	50.345094 , 23.348897
1160	50.345228 , 23.348163
1161	50.345523 , 23.346910
1162	50.345752 , 23.345955
1163	50.346024 , 23.344765
1164	50.346218 , 23.343927
1165	50.345723 , 23.343635
1166	50.345165 , 23.343255
1167	50.345176 , 23.343144
1168	50.344873 , 23.342958
1169	50.345089 , 23.342083
1170	50.345314 , 23.341151
1171	50.345265 , 23.341120
1172	50.345382 , 23.340607
1173	50.345027 , 23.340187
1174	50.344400 , 23.339456
1175	50.344420 , 23.339392

Nr pkt.	Współrzędne punktów załamania granicy w układzie WGS84
1176	50.344300 , 23.339277
1177	50.344226 , 23.339743
1178	50.343694 , 23.339636
1179	50.343559 , 23.339867
1180	50.343202 , 23.340282
1181	50.342687 , 23.340774
1182	50.342362 , 23.340976
1183	50.342239 , 23.340863
1184	50.342090 , 23.340502
1185	50.341884 , 23.340969
1186	50.341540 , 23.341773
1187	50.340856 , 23.343141
1188	50.340450 , 23.343672
1189	50.340472 , 23.343392
1190	50.340475 , 23.343098
1191	50.340665 , 23.342873
1192	50.340574 , 23.342737
1193	50.340490 , 23.342729
1194	50.340483 , 23.342658
1195	50.340528 , 23.342275
1196	50.340462 , 23.342208
1197	50.340497 , 23.341964
1198	50.340585 , 23.341785
1199	50.340709 , 23.341920
1200	50.340868 , 23.341868
1201	50.340882 , 23.341772
1202	50.340974 , 23.341757
1203	50.341038 , 23.341715
1204	50.341099 , 23.341579
1205	50.341087 , 23.341454
1206	50.340841 , 23.341193
1207	50.340853 , 23.341120
1208	50.340986 , 23.340985
1209	50.341035 , 23.340850
1210	50.340970 , 23.340745
1211	50.341001 , 23.340444
1212	50.340947 , 23.340164
1213	50.341137 , 23.339801
1214	50.341069 , 23.339682
1215	50.340967 , 23.339483
1216	50.341086 , 23.339309
1217	50.341687 , 23.339103
1218	50.341427 , 23.338766
1219	50.341765 , 23.337998
1220	50.341851 , 23.338091
1221	50.342124 , 23.337923

Nr pkt.	Współrzędne punktów załamania granicy w układzie WGS84
1222	50.342360 , 23.337156
1223	50.342455 , 23.336886
1224	50.341216 , 23.335482
1225	50.339854 , 23.336388
1226	50.339030 , 23.336942
1227	50.338404 , 23.337358
1228	50.337985 , 23.337641
1229	50.337708 , 23.337865
1230	50.337540 , 23.338061
1231	50.337358 , 23.338289
1232	50.337260 , 23.338451
1233	50.337105 , 23.338802
1234	50.336909 , 23.339231
1235	50.336867 , 23.339347
1236	50.336401 , 23.340358
1237	50.336198 , 23.340763
1238	50.335936 , 23.341096
1239	50.335740 , 23.341295
1240	50.334729 , 23.341978
1241	50.333998 , 23.342456
1242	50.333013 , 23.343138
1243	50.332614 , 23.343436
1244	50.332203 , 23.343673
1245	50.332156 , 23.343690
1246	50.331607 , 23.343937
1247	50.330029 , 23.344637
1248	50.329207 , 23.345029
1249	50.329031 , 23.346629
1250	50.328994 , 23.347680
1251	50.328838 , 23.347822
1252	50.328596 , 23.347934
1253	50.328506 , 23.347990
1254	50.328390 , 23.348055
1255	50.328327 , 23.348137
1256	50.327740 , 23.348736
1257	50.327633 , 23.348852
1258	50.327615 , 23.348853
1259	50.326911 , 23.349214
1260	50.326748 , 23.349306
1261	50.326507 , 23.349466
1262	50.326381 , 23.349605
1263	50.326223 , 23.349808
1264	50.326177 , 23.349885
1265	50.326030 , 23.349990
1266	50.325848 , 23.350126
1267	50.325632 , 23.350301

Nr pkt.	Współrzędne punktów załamania granicy w układzie WGS84	
1268	50.325116	23.350789
1269	50.325036	23.351085
1270	50.325065	23.351548
1271	50.325080	23.351884
1272	50.325040	23.352341
1273	50.324999	23.352510
1274	50.324871	23.352953
1275	50.324742	23.353154
1276	50.324611	23.353486
1277	50.324247	23.353915
1278	50.324138	23.354039
1279	50.323849	23.354425
1280	50.323211	23.356632
1281	50.323171	23.356657
1282	50.322867	23.356917
1283	50.322576	23.357167
1284	50.321356	23.358424
1285	50.321123	23.358660
1286	50.320941	23.358962
1287	50.320682	23.359310
1288	50.320645	23.359389
1289	50.320558	23.359827
1290	50.320454	23.361947
1291	50.320248	23.362843
1292	50.320225	23.363488
1293	50.320325	23.364252
1294	50.320302	23.364678
1295	50.319922	23.364832
1296	50.319505	23.364917
1297	50.319222	23.365058
1298	50.318956	23.365251
1299	50.318835	23.365522
1300	50.318688	23.365693
1301	50.318431	23.365809
1302	50.318314	23.365957
1303	50.318229	23.366209
1304	50.318108	23.366758
1305	50.317841	23.367303
1306	50.317729	23.367523
1307	50.316811	23.368240
1308	50.316725	23.368268
1309	50.316651	23.367881
1310	50.313635	23.359033
1311	50.313617	23.358552
1312	50.313404	23.358652
1313	50.313045	23.358120

Nr pkt.	Współrzędne punktów załamania granicy w układzie WGS84	
1314	50.312848	23.357244
1315	50.312251	23.357488
1316	50.311892	23.357638
1317	50.311916	23.357836
1318	50.310656	23.359053
1319	50.310362	23.359342
1320	50.309914	23.360253
1321	50.309882	23.360278
1322	50.309720	23.359850
1323	50.309581	23.359743
1324	50.309395	23.359613
1325	50.309079	23.359665
1326	50.308968	23.359679
1327	50.308607	23.359605
1328	50.308512	23.358994
1329	50.308449	23.358644
1330	50.308367	23.358472
1331	50.308356	23.358375
1332	50.308338	23.357982
1333	50.308102	23.357986
1334	50.308025	23.357688
1335	50.307917	23.357234
1336	50.307911	23.357101
1337	50.307796	23.356055
1338	50.307791	23.355713
1339	50.307769	23.354893
1340	50.308019	23.354738
1341	50.308045	23.354319
1342	50.307962	23.353875
1343	50.308212	23.353527
1344	50.308564	23.353599
1345	50.308741	23.353464
1346	50.308943	23.354166
1347	50.309137	23.353975
1348	50.309342	23.354027
1349	50.309378	23.354168
1350	50.309477	23.354605
1351	50.309686	23.354719
1352	50.309676	23.354472
1353	50.309646	23.354208
1354	50.309595	23.353651
1355	50.309573	23.353488
1356	50.309491	23.353011
1357	50.309338	23.353077
1358	50.309087	23.352663
1359	50.308983	23.352184

Nr pkt.	Współrzędne punktów załamania granicy w układzie WGS84	
1360	50.308942	23.351876
1361	50.309247	23.351835
1362	50.309193	23.350530
1363	50.309175	23.350462
1364	50.309071	23.349876
1365	50.308899	23.348705
1366	50.308481	23.349170
1367	50.308374	23.348348
1368	50.308139	23.346854
1369	50.308336	23.346565
1370	50.307313	23.344413
1371	50.306331	23.343998
1372	50.305622	23.344692
1373	50.305376	23.344218
1374	50.305211	23.343872
1375	50.304903	23.343585
1376	50.304396	23.344029
1377	50.304123	23.344928
1378	50.303923	23.345859
1379	50.303619	23.347088
1380	50.303443	23.348695
1381	50.303374	23.349335
1382	50.302960	23.349328
1383	50.302925	23.350124
1384	50.302987	23.351078
1385	50.303292	23.352853
1386	50.303319	23.353045
1387	50.303851	23.356172
1388	50.304239	23.356948
1389	50.304163	23.357095
1390	50.304064	23.357168
1391	50.303673	23.357777
1392	50.303041	23.358331
1393	50.302889	23.358520
1394	50.302679	23.358703
1395	50.302372	23.359293
1396	50.302051	23.359748
1397	50.301535	23.360686
1398	50.301024	23.361251
1399	50.300381	23.362095
1400	50.299628	23.362586
1401	50.299601	23.362521
1402	50.298712	23.362731
1403	50.298720	23.363646
1404	50.298327	23.363693
1405	50.298344	23.364285

Nr pkt.	Współrzędne punktów załamania granicy w układzie WGS84	
1406	50.298144	23.364546
1407	50.297688	23.364635
1408	50.297718	23.365612
1409	50.297229	23.365802
1410	50.297215	23.365347
1411	50.295849	23.365548
1412	50.295863	23.365650
1413	50.296019	23.366015
1414	50.296025	23.366125
1415	50.296080	23.366305
1416	50.296113	23.366606
1417	50.296025	23.366810
1418	50.295907	23.366975
1419	50.295813	23.367164
1420	50.295718	23.367422
1421	50.295681	23.367839
1422	50.295698	23.368048
1423	50.295959	23.368506
1424	50.296078	23.368879
1425	50.296089	23.369146
1426	50.296325	23.369808
1427	50.296425	23.370194
1428	50.296300	23.371166
1429	50.296265	23.371265
1430	50.296176	23.371149
1431	50.296132	23.370755
1432	50.295992	23.370048
1433	50.295741	23.369640
1434	50.295503	23.369326
1435	50.295012	23.368667
1436	50.294839	23.368343
1437	50.294712	23.367984
1438	50.294554	23.367556
1439	50.294585	23.366634
1440	50.294606	23.365825
1441	50.294342	23.363909
1442	50.294421	23.363191
1443	50.294460	23.362826
1444	50.294479	23.362567
1445	50.294496	23.361738
1446	50.294534	23.361513
1447	50.294547	23.361422
1448	50.294551	23.361171
1449	50.294477	23.359225
1450	50.294456	23.358620
1451	50.294425	23.357795

Nr pkt.	Współrzędne punktów załamania granicy w układzie WGS84
1452	50.294413 , 23.357510
1453	50.294400 , 23.357261
1454	50.294074 , 23.356634
1455	50.293848 , 23.356166
1456	50.293468 , 23.355062
1457	50.293249 , 23.354607
1458	50.292927 , 23.353958
1459	50.292553 , 23.353775
1460	50.292306 , 23.353676
1461	50.292151 , 23.353680
1462	50.291942 , 23.353706
1463	50.291630 , 23.353660
1464	50.290985 , 23.353588
1465	50.289979 , 23.353595
1466	50.289518 , 23.353806
1467	50.289100 , 23.354041
1468	50.288882 , 23.354057
1469	50.288688 , 23.354228
1470	50.288356 , 23.354502
1471	50.288228 , 23.354586
1472	50.288047 , 23.354608
1473	50.287742 , 23.354736
1474	50.287580 , 23.354805
1475	50.286980 , 23.354654
1476	50.286505 , 23.354606
1477	50.286288 , 23.354582
1478	50.286086 , 23.354456
1479	50.285706 , 23.354208
1480	50.285122 , 23.353850
1481	50.284662 , 23.353870
1482	50.284852 , 23.352843
1483	50.285324 , 23.351793
1484	50.285468 , 23.351476
1485	50.285993 , 23.351911
1486	50.286215 , 23.352365
1487	50.286233 , 23.352349
1488	50.286129 , 23.351306
1489	50.286579 , 23.351102
1490	50.286533 , 23.350661
1491	50.286348 , 23.350286
1492	50.285829 , 23.349197
1493	50.285747 , 23.349017
1494	50.285655 , 23.348765
1495	50.285545 , 23.348495
1496	50.285416 , 23.348262
1497	50.285640 , 23.347848

Nr pkt.	Współrzędne punktów załamania granicy w układzie WGS84
1498	50.285711 , 23.347669
1499	50.285781 , 23.347405
1500	50.285790 , 23.346721
1501	50.286219 , 23.345373
1502	50.286193 , 23.345311
1503	50.286202 , 23.345262
1504	50.286294 , 23.345499
1505	50.286656 , 23.345921
1506	50.286734 , 23.346016
1507	50.286775 , 23.345732
1508	50.287225 , 23.345774
1509	50.287824 , 23.345837
1510	50.287826 , 23.344211
1511	50.288531 , 23.344186
1512	50.288397 , 23.342170
1513	50.288115 , 23.342159
1514	50.288020 , 23.341540
1515	50.287989 , 23.341288
1516	50.288399 , 23.341302
1517	50.289136 , 23.341354
1518	50.289139 , 23.340541
1519	50.289148 , 23.340298
1520	50.289734 , 23.340345
1521	50.289744 , 23.340074
1522	50.290448 , 23.340114
1523	50.290503 , 23.339172
1524	50.290017 , 23.339119
1525	50.288194 , 23.338926
1526	50.288403 , 23.338327
1527	50.288466 , 23.338155
1528	50.288539 , 23.337906
1529	50.289661 , 23.338021
1530	50.289750 , 23.336913
1531	50.290237 , 23.336947
1532	50.290253 , 23.336194
1533	50.290405 , 23.336205
1534	50.289385 , 23.334620
1535	50.288771 , 23.334900
1536	50.288769 , 23.335208
1537	50.287101 , 23.335476
1538	50.287001 , 23.337330
1539	50.286963 , 23.338036
1540	50.287050 , 23.339592
1541	50.284613 , 23.339795
1542	50.284038 , 23.337991
1543	50.283711 , 23.335763

Nr pkt.	Współrzędne punktów załamania granicy w układzie WGS84
1544	50.282902 , 23.333905
1545	50.282871 , 23.332604
1546	50.282861 , 23.332214
1547	50.283008 , 23.330989
1548	50.282181 , 23.331009
1549	50.282188 , 23.329420
1550	50.283301 , 23.329303
1551	50.283399 , 23.328171
1552	50.283091 , 23.328113
1553	50.283080 , 23.327585
1554	50.282691 , 23.326943
1555	50.282283 , 23.326914
1556	50.282386 , 23.326178
1557	50.282165 , 23.325559
1558	50.282395 , 23.324705
1559	50.283362 , 23.324685
1560	50.284395 , 23.324117
1561	50.284304 , 23.323447
1562	50.284203 , 23.322839
1563	50.283570 , 23.321787
1564	50.282562 , 23.321286
1565	50.281985 , 23.319613
1566	50.280466 , 23.319745
1567	50.280445 , 23.319727
1568	50.280428 , 23.319465
1569	50.280463 , 23.319456
1570	50.280524 , 23.319564
1571	50.280616 , 23.319583
1572	50.280766 , 23.318671
1573	50.280831 , 23.318837
1574	50.280944 , 23.318581
1575	50.281029 , 23.318552
1576	50.281092 , 23.318278
1577	50.281087 , 23.318090
1578	50.281288 , 23.317774
1579	50.281280 , 23.317519
1580	50.281342 , 23.317352
1581	50.281407 , 23.317380
1582	50.281478 , 23.317019
1583	50.281541 , 23.316979
1584	50.281619 , 23.316479
1585	50.281993 , 23.315485
1586	50.282050 , 23.315394
1587	50.282124 , 23.315067
1588	50.282104 , 23.314837
1589	50.282169 , 23.314712

Nr pkt.	Współrzędne punktów załamania granicy w układzie WGS84
1590	50.282166 , 23.314607
1591	50.282248 , 23.314436
1592	50.282275 , 23.314296
1593	50.282246 , 23.314203
1594	50.282029 , 23.313674
1595	50.282076 , 23.313598
1596	50.282205 , 23.313767
1597	50.282278 , 23.313790
1598	50.282300 , 23.313760
1599	50.282245 , 23.313665
1600	50.282347 , 23.313451
1601	50.282358 , 23.313340
1602	50.282455 , 23.313062
1603	50.282501 , 23.312815
1604	50.282529 , 23.312782
1605	50.282621 , 23.312753
1606	50.282576 , 23.312628
1607	50.282633 , 23.312257
1608	50.282720 , 23.312010
1609	50.282738 , 23.311709
1610	50.282903 , 23.311441
1611	50.282927 , 23.311214
1612	50.282971 , 23.311137
1613	50.282997 , 23.310868
1614	50.283007 , 23.310828
1615	50.283099 , 23.310687
1616	50.283137 , 23.310646
1617	50.283132 , 23.310365
1618	50.283122 , 23.310149
1619	50.283028 , 23.310002
1620	50.283049 , 23.309713
1621	50.283056 , 23.309440
1622	50.283038 , 23.309404
1623	50.282985 , 23.309252
1624	50.283015 , 23.309170
1625	50.283010 , 23.309025
1626	50.282991 , 23.308857
1627	50.282989 , 23.308694
1628	50.283025 , 23.308606
1629	50.283054 , 23.308518
1630	50.282980 , 23.308168
1631	50.283065 , 23.307898
1632	50.282957 , 23.307744
1633	50.282907 , 23.307503
1634	50.282837 , 23.307349
1635	50.282771 , 23.307219

Nr pkt.	Współrzędne punktów załamania granicy w układzie WGS84	
1636	50.282741	23.307129
1637	50.282748	23.307060
1638	50.282766	23.306819
1639	50.282780	23.306711
1640	50.282773	23.306608
1641	50.282728	23.306446
1642	50.282699	23.306366
1643	50.282680	23.306288
1644	50.282811	23.306017
1645	50.282698	23.305769
1646	50.282721	23.305685
1647	50.282675	23.305562
1648	50.282674	23.305474
1649	50.282683	23.305331
1650	50.282640	23.305183
1651	50.282609	23.305051
1652	50.282653	23.304878
1653	50.282669	23.304792
1654	50.282645	23.304747
1655	50.282597	23.304675
1656	50.282593	23.304626
1657	50.282603	23.304383
1658	50.282578	23.303825
1659	50.282586	23.303641
1660	50.282587	23.303553
1661	50.282575	23.303102
1662	50.282480	23.302798
1663	50.282521	23.302650
1664	50.282535	23.302593
1665	50.282495	23.302460
1666	50.282446	23.302227
1667	50.282472	23.302081
1668	50.282445	23.301944
1669	50.282417	23.301843
1670	50.282430	23.301588
1671	50.282355	23.301485
1672	50.282329	23.301284
1673	50.282366	23.301217
1674	50.282341	23.300671
1675	50.282340	23.300578
1676	50.282411	23.300379
1677	50.282434	23.299949
1678	50.282453	23.299739
1679	50.282505	23.299382
1680	50.282579	23.299216
1681	50.282646	23.299101

Nr pkt.	Współrzędne punktów załamania granicy w układzie WGS84	
1682	50.282537	23.299132
1683	50.282417	23.298809
1684	50.282500	23.298698
1685	50.282455	23.298543
1686	50.282444	23.298467
1687	50.282464	23.298365
1688	50.282496	23.298178
1689	50.282456	23.298046
1690	50.282514	23.297942
1691	50.282518	23.297815
1692	50.282412	23.297709
1693	50.282726	23.297449
1694	50.282708	23.297323
1695	50.282625	23.297191
1696	50.282599	23.297047
1697	50.282566	23.296924
1698	50.282476	23.296800
1699	50.282372	23.296441
1700	50.282325	23.296294
1701	50.282264	23.295994
1702	50.282278	23.295916
1703	50.282308	23.295806
1704	50.282267	23.295746
1705	50.282094	23.295459
1706	50.281890	23.295136
1707	50.281965	23.294755
1708	50.281962	23.294595
1709	50.281865	23.294492
1710	50.281786	23.294392
1711	50.281747	23.294318
1712	50.281596	23.294372
1713	50.281645	23.294097
1714	50.281594	23.294052
1715	50.281378	23.293885
1716	50.281147	23.293717
1717	50.281138	23.293659
1718	50.281132	23.293566
1719	50.281058	23.293566
1720	50.280997	23.293420
1721	50.280866	23.293008
1722	50.280803	23.292785
1723	50.280515	23.292647
1724	50.280445	23.292299
1725	50.280348	23.292112
1726	50.280067	23.292162
1727	50.279747	23.292131

Nr pkt.	Współrzędne punktów załamania granicy w układzie WGS84	
1728	50.279120	23.292077
1729	50.278739	23.292046
1730	50.277187	23.292098
1731	50.277035	23.292174
1732	50.275953	23.293113
1733	50.275528	23.293474
1734	50.275407	23.293587
1735	50.275140	23.293929
1736	50.274669	23.294566
1737	50.273451	23.296176
1738	50.273061	23.296678
1739	50.272924	23.296843
1740	50.272593	23.297288
1741	50.271941	23.298129
1742	50.271506	23.298704
1743	50.270996	23.299352
1744	50.270847	23.299534
1745	50.270665	23.299718
1746	50.270339	23.299876
1747	50.269612	23.300207
1748	50.269437	23.300291
1749	50.268927	23.300482
1750	50.268316	23.300755
1751	50.267843	23.300985
1752	50.266967	23.301364
1753	50.265995	23.301790
1754	50.264946	23.302247
1755	50.264185	23.302582
1756	50.263781	23.302760
1757	50.262126	23.303511
1758	50.261182	23.303929
1759	50.260758	23.304126
1760	50.259504	23.304723
1761	50.258214	23.305602
1762	50.257624	23.306006
1763	50.257435	23.306109
1764	50.257143	23.306248
1765	50.256826	23.306218
1766	50.256191	23.306167
1767	50.255330	23.306073
1768	50.255036	23.306050
1769	50.254529	23.305986
1770	50.253607	23.305897
1771	50.253261	23.305866
1772	50.251969	23.305955
1773	50.250787	23.306045

Nr pkt.	Współrzędne punktów załamania granicy w układzie WGS84	
1774	50.249569	23.306152
1775	50.249149	23.306182
1776	50.249072	23.306194
1777	50.247942	23.306258
1778	50.247697	23.306273
1779	50.247662	23.306286
1780	50.247034	23.306318
1781	50.246975	23.306593
1782	50.246873	23.307075
1783	50.246896	23.307115
1784	50.246870	23.307247
1785	50.246841	23.307295
1786	50.246828	23.307374
1787	50.246738	23.307822
1788	50.246566	23.308629
1789	50.246585	23.308672
1790	50.246562	23.308824
1791	50.246526	23.308853
1792	50.246282	23.310016
1793	50.246296	23.310073
1794	50.246268	23.310209
1795	50.246232	23.310255
1796	50.246203	23.310533
1797	50.246187	23.311030
1798	50.246212	23.311082
1799	50.246204	23.311238
1800	50.246194	23.311289
1801	50.246188	23.311532
1802	50.246211	23.311577
1803	50.246210	23.311714
1804	50.246194	23.311747
1805	50.246190	23.312165
1806	50.246170	23.313521
1807	50.246188	23.313554
1808	50.246190	23.313633
1809	50.246183	23.313699
1810	50.246170	23.313711
1811	50.246139	23.314442
1812	50.246102	23.314769
1813	50.246036	23.314976
1814	50.245960	23.315260
1815	50.245894	23.315463
1816	50.245818	23.315706
1817	50.245776	23.315864
1818	50.245762	23.315896
1819	50.245771	23.315941

Nr pkt.	Współrzędne punktów załamania granicy w układzie WGS84
1820	50.245735 , 23.316087
1821	50.245706 , 23.316098
1822	50.245670 , 23.316236
1823	50.245548 , 23.316643
1824	50.245561 , 23.316669
1825	50.245513 , 23.316814
1826	50.245497 , 23.316828
1827	50.245474 , 23.316937
1828	50.245448 , 23.317005
1829	50.245211 , 23.317835
1830	50.245218 , 23.317869
1831	50.245182 , 23.317989
1832	50.245154 , 23.318009
1833	50.244918 , 23.318805
1834	50.244788 , 23.319236
1835	50.244684 , 23.319509
1836	50.244462 , 23.320096
1837	50.244261 , 23.320627
1838	50.244139 , 23.320975
1839	50.243968 , 23.321426
1840	50.243702 , 23.322430
1841	50.243711 , 23.322458
1842	50.243696 , 23.322542
1843	50.243667 , 23.322606
1844	50.243607 , 23.322826
1845	50.243412 , 23.323582
1846	50.243343 , 23.323785
1847	50.243148 , 23.324582
1848	50.243041 , 23.325007
1849	50.242933 , 23.325398
1850	50.242892 , 23.325575
1851	50.242871 , 23.325644
1852	50.242759 , 23.326154
1853	50.242717 , 23.326487
1854	50.242636 , 23.326775
1855	50.242429 , 23.326989
1856	50.242509 , 23.327538
1857	50.242446 , 23.327894
1858	50.242387 , 23.328021
1859	50.242047 , 23.328161
1860	50.241898 , 23.328187
1861	50.241694 , 23.328329
1862	50.241539 , 23.328431
1863	50.241441 , 23.328572
1864	50.241406 , 23.328578
1865	50.241235 , 23.328782

Nr pkt.	Współrzędne punktów załamania granicy w układzie WGS84
1866	50.241085 , 23.328922
1867	50.240476 , 23.329355
1868	50.240302 , 23.329486
1869	50.239783 , 23.329979
1870	50.239248 , 23.330519
1871	50.239061 , 23.330731
1872	50.238862 , 23.330968
1873	50.238133 , 23.332087
1874	50.236815 , 23.334182
1875	50.236409 , 23.334845
1876	50.235921 , 23.335568
1877	50.235782 , 23.335777
1878	50.235374 , 23.336402
1879	50.235063 , 23.336958
1880	50.234951 , 23.336789
1881	50.234826 , 23.336703
1882	50.234690 , 23.336560
1883	50.234628 , 23.336481
1884	50.234512 , 23.336313
1885	50.234419 , 23.336174
1886	50.234260 , 23.336015
1887	50.234129 , 23.335905
1888	50.233877 , 23.335740
1889	50.233789 , 23.335663
1890	50.233665 , 23.335582
1891	50.233506 , 23.335433
1892	50.233378 , 23.335284
1893	50.233250 , 23.335203
1894	50.233137 , 23.335117
1895	50.233015 , 23.334915
1896	50.232918 , 23.334733
1897	50.232856 , 23.334574
1898	50.232783 , 23.334362
1899	50.232697 , 23.334045
1900	50.232630 , 23.333852
1901	50.232518 , 23.333511
1902	50.232414 , 23.333227
1903	50.232165 , 23.332813
1904	50.231973 , 23.332588
1905	50.231821 , 23.332393
1906	50.231779 , 23.332352
1907	50.231630 , 23.332130
1908	50.231493 , 23.331891
1909	50.231432 , 23.331760
1910	50.231351 , 23.331563
1911	50.231283 , 23.331397

Nr pkt.	Współrzędne punktów załamania granicy w układzie WGS84
1912	50.231202 , 23.331225
1913	50.231114 , 23.331065
1914	50.231052 , 23.330933
1915	50.230929 , 23.330730
1916	50.230792 , 23.330493
1917	50.230688 , 23.330321
1918	50.230580 , 23.330103
1919	50.230414 , 23.329689
1920	50.229788 , 23.330628
1921	50.229145 , 23.331601
1922	50.229098 , 23.331676
1923	50.228993 , 23.331794
1924	50.228856 , 23.331894
1925	50.228693 , 23.331997
1926	50.228589 , 23.332043
1927	50.228226 , 23.332153
1928	50.228019 , 23.332227
1929	50.227833 , 23.332304
1930	50.227172 , 23.332529
1931	50.226534 , 23.332742
1932	50.226310 , 23.332928
1933	50.225958 , 23.333246
1934	50.224745 , 23.334334
1935	50.224626 , 23.334483
1936	50.224534 , 23.334686
1937	50.224394 , 23.335051
1938	50.224413 , 23.335058
1939	50.224247 , 23.335502
1940	50.224118 , 23.335835
1941	50.223985 , 23.336194
1942	50.223695 , 23.336860
1943	50.223540 , 23.337307
1944	50.223376 , 23.337757
1945	50.223112 , 23.338464
1946	50.222463 , 23.340315
1947	50.222391 , 23.340529
1948	50.222078 , 23.341377
1949	50.221783 , 23.342200
1950	50.221637 , 23.342648
1951	50.221265 , 23.343629
1952	50.221139 , 23.343866
1953	50.221055 , 23.344015
1954	50.220934 , 23.344143
1955	50.220826 , 23.344195
1956	50.220264 , 23.344606
1957	50.219441 , 23.345104

Nr pkt.	Współrzędne punktów załamania granicy w układzie WGS84
1958	50.219054 , 23.345489
1959	50.217978 , 23.346918
1960	50.216958 , 23.348306
1961	50.216720 , 23.348581
1962	50.216459 , 23.348764
1963	50.216317 , 23.348799
1964	50.216239 , 23.348815
1965	50.215128 , 23.349129
1966	50.214395 , 23.349327
1967	50.213897 , 23.349660
1968	50.213552 , 23.349881
1969	50.213214 , 23.350119
1970	50.212058 , 23.350992
1971	50.211586 , 23.351408
1972	50.211519 , 23.351236
1973	50.211502 , 23.350508
1974	50.211488 , 23.350095
1975	50.211564 , 23.349723
1976	50.211591 , 23.349459
1977	50.211562 , 23.349013
1978	50.211542 , 23.348680
1979	50.211494 , 23.348196
1980	50.211385 , 23.347063
1981	50.211374 , 23.345556
1982	50.211470 , 23.344580
1983	50.211036 , 23.343361
1984	50.210865 , 23.343075
1985	50.210351 , 23.342382
1986	50.210146 , 23.341937
1987	50.210136 , 23.341652
1988	50.210250 , 23.341326
1989	50.210745 , 23.341137
1990	50.210670 , 23.340565
1991	50.210675 , 23.340326
1992	50.210665 , 23.339848
1993	50.210664 , 23.339243
1994	50.210766 , 23.337788
1995	50.210792 , 23.337060
1996	50.210754 , 23.336394
1997	50.210719 , 23.335226
1998	50.210711 , 23.334939
1999	50.210717 , 23.334422
2000	50.210724 , 23.333671
2001	50.210744 , 23.333359
2002	50.210886 , 23.331317
2003	50.210935 , 23.330538

Nr pkt.	Współrzędne punktów załamania granicy w układzie WGS84	
2004	50.210971	23.330093
2005	50.211191	23.327089
2006	50.211324	23.325402
2007	50.211442	23.323953
2008	50.211543	23.323459
2009	50.211767	23.322280
2010	50.211801	23.321955
2011	50.211694	23.322014
2012	50.211493	23.322111
2013	50.210437	23.322459
2014	50.209724	23.322691
2015	50.208602	23.323054
2016	50.208362	23.323099
2017	50.208101	23.323081
2018	50.207313	23.322917
2019	50.206330	23.322670
2020	50.206054	23.322613
2021	50.205215	23.322444
2022	50.204809	23.324508
2023	50.204238	23.327433
2024	50.204207	23.327838
2025	50.204212	23.328100
2026	50.204273	23.328797
2027	50.204505	23.330791
2028	50.204592	23.331846
2029	50.204572	23.332247
2030	50.204403	23.332716
2031	50.204259	23.332998
2032	50.203623	23.334407
2033	50.202841	23.336133
2034	50.201428	23.339336
2035	50.201119	23.340055
2036	50.200787	23.340771
2037	50.200558	23.341288
2038	50.200290	23.341799
2039	50.198077	23.345074
2040	50.197971	23.345304
2041	50.197803	23.345792
2042	50.197634	23.346414
2043	50.197516	23.346874
2044	50.197193	23.348163
2045	50.196851	23.349477
2046	50.196674	23.350186
2047	50.196220	23.351910
2048	50.195769	23.353718
2049	50.195562	23.354532

Nr pkt.	Współrzędne punktów załamania granicy w układzie WGS84	
2050	50.195425	23.355019
2051	50.194914	23.357141
2052	50.194892	23.357597
2053	50.194870	23.358580
2054	50.194803	23.358879
2055	50.194806	23.359024
2056	50.194943	23.360062
2057	50.194959	23.360104
2058	50.195084	23.360684
2059	50.195127	23.360851
2060	50.195304	23.361484
2061	50.195576	23.362429
2062	50.195717	23.362752
2063	50.195951	23.363307
2064	50.196050	23.363514
2065	50.196272	23.363959
2066	50.196522	23.364478
2067	50.196663	23.364422
2068	50.196763	23.364628
2069	50.196631	23.364591
2070	50.197177	23.365779
2071	50.197553	23.366398
2072	50.198072	23.367617
2073	50.198183	23.367778
2074	50.198857	23.368698
2075	50.199124	23.369008
2076	50.199545	23.369347
2077	50.199748	23.369488
2078	50.200049	23.369682
2079	50.200441	23.369864
2080	50.200684	23.369931
2081	50.201559	23.370018
2082	50.201801	23.370056
2083	50.202746	23.370197
2084	50.203000	23.370215
2085	50.203212	23.370145
2086	50.203169	23.370608
2087	50.202214	23.371105
2088	50.202060	23.371242
2089	50.202277	23.371359
2090	50.202354	23.371411
2091	50.201844	23.371755
2092	50.201811	23.372251
2093	50.201782	23.372532
2094	50.201883	23.372464
2095	50.201896	23.372408

Nr pkt.	Współrzędne punktów załamania granicy w układzie WGS84	
2096	50.201920	23.372398
2097	50.201849	23.372730
2098	50.201911	23.372985
2099	50.201851	23.373015
2100	50.201778	23.373223
2101	50.201745	23.373420
2102	50.201750	23.373570
2103	50.201702	23.373746
2104	50.201587	23.373975
2105	50.201516	23.374015
2106	50.201262	23.374113
2107	50.200951	23.374147
2108	50.200691	23.374146
2109	50.200633	23.374058
2110	50.200189	23.373941
2111	50.200077	23.373774
2112	50.199949	23.373759
2113	50.199830	23.373836
2114	50.199757	23.373798
2115	50.199745	23.373762
2116	50.199577	23.373772
2117	50.199462	23.373938
2118	50.199375	23.374103
2119	50.199234	23.374257
2120	50.199159	23.374322
2121	50.198992	23.374181
2122	50.198953	23.374074
2123	50.198952	23.373952
2124	50.198818	23.373911
2125	50.198504	23.373701
2126	50.198392	23.373668
2127	50.198322	23.373514
2128	50.198233	23.373413
2129	50.198145	23.373323
2130	50.198170	23.373519
2131	50.198005	23.373626
2132	50.197949	23.373785
2133	50.197743	23.373973
2134	50.197735	23.374201
2135	50.197663	23.374402
2136	50.197886	23.374522
2137	50.197929	23.374818
2138	50.197875	23.375185
2139	50.197714	23.375529
2140	50.197642	23.375883
2141	50.197658	23.375945

Nr pkt.	Współrzędne punktów załamania granicy w układzie WGS84	
2142	50.197680	23.376001
2143	50.197775	23.376362
2144	50.197808	23.376629
2145	50.197647	23.377337
2146	50.197550	23.377501
2147	50.197426	23.378295
2148	50.197506	23.378542
2149	50.197582	23.378879
2150	50.197612	23.379087
2151	50.197571	23.379462
2152	50.197539	23.379672
2153	50.197464	23.379797
2154	50.197425	23.379905
2155	50.197389	23.380041
2156	50.197445	23.380621
2157	50.197551	23.381014
2158	50.197665	23.381482
2159	50.197595	23.382410
2160	50.197584	23.382792
2161	50.197515	23.383479
2162	50.197438	23.383951
2163	50.197354	23.384216
2164	50.197290	23.384669
2165	50.197243	23.385213
2166	50.197332	23.385824
2167	50.197363	23.386006
2168	50.197223	23.386672
2169	50.197271	23.386801
2170	50.197384	23.386899
2171	50.197399	23.386998
2172	50.197228	23.387255
2173	50.197202	23.387450
2174	50.197246	23.387583
2175	50.197353	23.388033
2176	50.197494	23.388494
2177	50.197625	23.389028
2178	50.197633	23.389223
2179	50.197631	23.389426
2180	50.197431	23.389739
2181	50.197150	23.389913
2182	50.196913	23.389932
2183	50.196738	23.389884
2184	50.196642	23.389991
2185	50.196536	23.390237
2186	50.196639	23.390276
2187	50.196727	23.390858

Nr pkt.	Współrzędne punktów załamania granicy w układzie WGS84
2188	50.196821 , 23.391092
2189	50.197055 , 23.391776
2190	50.197162 , 23.392117
2191	50.197290 , 23.392314
2192	50.197389 , 23.392417
2193	50.197668 , 23.393313
2194	50.197542 , 23.394381
2195	50.197535 , 23.395634
2196	50.197737 , 23.396764
2197	50.197707 , 23.396753
2198	50.197711 , 23.396997
2199	50.197663 , 23.397077
2200	50.197738 , 23.397651
2201	50.197736 , 23.397866
2202	50.197894 , 23.398021
2203	50.197864 , 23.398331
2204	50.197780 , 23.398291
2205	50.197792 , 23.398495
2206	50.197477 , 23.398626
2207	50.197358 , 23.398607
2208	50.197406 , 23.398383
2209	50.197566 , 23.398324
2210	50.197561 , 23.398279
2211	50.197540 , 23.398241
2212	50.197469 , 23.398326
2213	50.197291 , 23.398200
2214	50.197332 , 23.397737
2215	50.197257 , 23.397740
2216	50.197286 , 23.397945
2217	50.197186 , 23.398061
2218	50.197009 , 23.397799
2219	50.196977 , 23.398113
2220	50.196647 , 23.398224
2221	50.196650 , 23.398446
2222	50.196495 , 23.398548
2223	50.196494 , 23.398804
2224	50.196455 , 23.398964
2225	50.196527 , 23.399775
2226	50.196589 , 23.400157
2227	50.196641 , 23.400687
2228	50.196521 , 23.401117
2229	50.196358 , 23.401127
2230	50.196351 , 23.401284
2231	50.196512 , 23.401715
2232	50.196646 , 23.402138
2233	50.196796 , 23.402492

Nr pkt.	Współrzędne punktów załamania granicy w układzie WGS84
2234	50.196814 , 23.402786
2235	50.196810 , 23.402951
2236	50.196899 , 23.403337
2237	50.196824 , 23.403419
2238	50.196959 , 23.403630
2239	50.196847 , 23.404069
2240	50.196713 , 23.404501
2241	50.196717 , 23.404759
2242	50.196604 , 23.404694
2243	50.196537 , 23.404989
2244	50.196391 , 23.405216
2245	50.196423 , 23.404991
2246	50.196192 , 23.404981
2247	50.196056 , 23.406009
2248	50.196180 , 23.406839
2249	50.196121 , 23.407390
2250	50.196500 , 23.407557
2251	50.196531 , 23.407985
2252	50.196687 , 23.408421
2253	50.196776 , 23.409577
2254	50.196593 , 23.410180
2255	50.196229 , 23.411300
2256	50.196135 , 23.411896
2257	50.196119 , 23.412665
2258	50.196291 , 23.412784
2259	50.196302 , 23.413382
2260	50.196089 , 23.413643
2261	50.196066 , 23.413999
2262	50.195958 , 23.414306
2263	50.195876 , 23.414696
2264	50.195121 , 23.414552
2265	50.194859 , 23.414919
2266	50.194636 , 23.415788
2267	50.195689 , 23.415889
2268	50.195692 , 23.417950
2269	50.195196 , 23.417873
2270	50.195089 , 23.418630
2271	50.194462 , 23.418667
2272	50.194434 , 23.419064
2273	50.195114 , 23.419275
2274	50.194741 , 23.420175
2275	50.194546 , 23.421159
2276	50.194475 , 23.421898
2277	50.194212 , 23.423011
2278	50.194278 , 23.424509
2279	50.194002 , 23.426227

Nr pkt.	Współrzędne punktów załamania granicy w układzie WGS84
2280	50.193312 , 23.426403
2281	50.193048 , 23.427073
2282	50.193322 , 23.428165
2283	50.193230 , 23.429791
2284	50.192663 , 23.429725
2285	50.192427 , 23.430106
2286	50.192422 , 23.430900
2287	50.193619 , 23.431198
2288	50.193502 , 23.431799
2289	50.193542 , 23.432162
2290	50.193875 , 23.432259
2291	50.194163 , 23.433011
2292	50.194259 , 23.433595
2293	50.193966 , 23.434164
2294	50.194197 , 23.435721
2295	50.193970 , 23.435865
2296	50.194172 , 23.437031
2297	50.194070 , 23.438780
2298	50.193673 , 23.438853
2299	50.192246 , 23.438767
2300	50.191956 , 23.438781
2301	50.187461 , 23.433349
2302	50.186534 , 23.432234
2303	50.184242 , 23.429466
2304	50.181388 , 23.423851
2305	50.179691 , 23.420495
2306	50.163137 , 23.387768
2307	50.161585 , 23.384706
2308	50.159383 , 23.380354
2309	50.155367 , 23.374396
2310	50.149217 , 23.365271
2311	50.145583 , 23.359882
2312	50.140945 , 23.353009
2313	50.139289 , 23.350552
2314	50.135031 , 23.344245
2315	50.133589 , 23.342121
2316	50.128590 , 23.335618
2317	50.127772 , 23.334556
2318	50.124769 , 23.330591
2319	50.122824 , 23.328027
2320	50.129438 , 23.325564
2321	50.130709 , 23.325076
2322	50.131604 , 23.324595
2323	50.133104 , 23.324039
2324	50.134708 , 23.323458
2325	50.135906 , 23.323037

Nr pkt.	Współrzędne punktów załamania granicy w układzie WGS84
2326	50.137170 , 23.322519
2327	50.137342 , 23.322245
2328	50.137409 , 23.322030
2329	50.140597 , 23.320676
2330	50.141568 , 23.320686
2331	50.141492 , 23.321741
2332	50.142694 , 23.321961
2333	50.142830 , 23.321817
2334	50.144338 , 23.321167
2335	50.144678 , 23.321291
2336	50.145111 , 23.321322
2337	50.148099 , 23.319410
2338	50.148478 , 23.319749
2339	50.149360 , 23.319416
2340	50.150189 , 23.319030
2341	50.150865 , 23.318972
2342	50.151551 , 23.318566
2343	50.152320 , 23.318264
2344	50.152705 , 23.318131
2345	50.153132 , 23.317984
2346	50.153929 , 23.317652
2347	50.154335 , 23.317487
2348	50.155109 , 23.317226
2349	50.155296 , 23.317167
2350	50.155460 , 23.317106
2351	50.156383 , 23.317682
2352	50.157262 , 23.318267
2353	50.157676 , 23.318538
2354	50.158710 , 23.319327
2355	50.159004 , 23.319549
2356	50.159852 , 23.320048
2357	50.160129 , 23.320267
2358	50.160514 , 23.320562
2359	50.160987 , 23.320957
2360	50.161754 , 23.321663
2361	50.161903 , 23.321356
2362	50.161989 , 23.321225
2363	50.162287 , 23.321051
2364	50.162922 , 23.320607
2365	50.163048 , 23.320427
2366	50.163126 , 23.320170
2367	50.163195 , 23.320052
2368	50.163394 , 23.319718
2369	50.163601 , 23.319285
2370	50.163650 , 23.319017
2371	50.163693 , 23.318566

Nr pkt.	Współrzędne punktów załamania granicy w układzie WGS84
2372	50.163853 , 23.318078
2373	50.163862 , 23.317867
2374	50.163934 , 23.317554
2375	50.163848 , 23.317062
2376	50.163724 , 23.316563
2377	50.163559 , 23.316252
2378	50.163520 , 23.316125
2379	50.163544 , 23.315658
2380	50.163529 , 23.315277
2381	50.163523 , 23.314998
2382	50.163559 , 23.314867
2383	50.163622 , 23.314726
2384	50.163849 , 23.314361
2385	50.163969 , 23.314090
2386	50.164054 , 23.313971
2387	50.164311 , 23.313751
2388	50.164417 , 23.313559
2389	50.164585 , 23.313396
2390	50.164697 , 23.313089
2391	50.164731 , 23.312954
2392	50.164967 , 23.312708
2393	50.165162 , 23.312142
2394	50.165347 , 23.311842
2395	50.165532 , 23.311533
2396	50.165613 , 23.311384
2397	50.165869 , 23.310917
2398	50.166063 , 23.310585
2399	50.166255 , 23.310463
2400	50.166745 , 23.309917
2401	50.166847 , 23.309802
2402	50.167118 , 23.309432
2403	50.167281 , 23.309189
2404	50.167483 , 23.308685
2405	50.167710 , 23.308303
2406	50.167818 , 23.308069
2407	50.168057 , 23.307313
2408	50.168220 , 23.306712
2409	50.168280 , 23.306109
2410	50.168397 , 23.305601
2411	50.168647 , 23.304951
2412	50.168770 , 23.304701
2413	50.169019 , 23.304147
2414	50.169695 , 23.302910
2415	50.169942 , 23.302469
2416	50.170064 , 23.302236
2417	50.170217 , 23.301938

Nr pkt.	Współrzędne punktów załamania granicy w układzie WGS84
2418	50.170903 , 23.300390
2419	50.171311 , 23.299465
2420	50.171728 , 23.298518
2421	50.171849 , 23.298180
2422	50.171952 , 23.297810
2423	50.172362 , 23.296376
2424	50.172401 , 23.296241
2425	50.172522 , 23.296284
2426	50.172872 , 23.296562
2427	50.173038 , 23.296624
2428	50.173156 , 23.296574
2429	50.173358 , 23.296416
2430	50.173511 , 23.296337
2431	50.173897 , 23.296212
2432	50.174081 , 23.296041
2433	50.174437 , 23.295771
2434	50.174669 , 23.295667
2435	50.174818 , 23.295635
2436	50.175208 , 23.295805
2437	50.175515 , 23.295856
2438	50.175977 , 23.295824
2439	50.176349 , 23.295764
2440	50.176671 , 23.295717
2441	50.177264 , 23.295908
2442	50.177699 , 23.296038
2443	50.177934 , 23.296216
2444	50.178456 , 23.296643
2445	50.178579 , 23.296744
2446	50.178716 , 23.296942
2447	50.179562 , 23.298404
2448	50.179926 , 23.299030
2449	50.180497 , 23.300050
2450	50.180990 , 23.300682
2451	50.181195 , 23.300749
2452	50.181466 , 23.300810
2453	50.181711 , 23.300851
2454	50.182349 , 23.300953
2455	50.182488 , 23.300961
2456	50.182497 , 23.300906
2457	50.182461 , 23.300839
2458	50.182584 , 23.300289
2459	50.182832 , 23.299590
2460	50.182897 , 23.298745
2461	50.182948 , 23.297661
2462	50.182928 , 23.297602
2463	50.183067 , 23.297489

Nr pkt.	Współrzędne punktów załamania granicy w układzie WGS84
2464	50.183099 , 23.297434
2465	50.183193 , 23.297387
2466	50.183244 , 23.297223
2467	50.183307 , 23.297218
2468	50.183377 , 23.297165
2469	50.183425 , 23.297094
2470	50.183492 , 23.297029
2471	50.183553 , 23.296922
2472	50.183538 , 23.296761
2473	50.183561 , 23.296757
2474	50.183576 , 23.296507
2475	50.183630 , 23.296442
2476	50.183681 , 23.296432
2477	50.183703 , 23.296390
2478	50.183795 , 23.296454
2479	50.183879 , 23.296397
2480	50.184045 , 23.296141
2481	50.184015 , 23.295744
2482	50.184155 , 23.295600
2483	50.184164 , 23.295393
2484	50.184093 , 23.295203
2485	50.184135 , 23.295031
2486	50.184213 , 23.294574
2487	50.184400 , 23.294492
2488	50.184623 , 23.294192
2489	50.184756 , 23.293926
2490	50.184758 , 23.293672
2491	50.184986 , 23.293673
2492	50.185374 , 23.293417
2493	50.185551 , 23.293375
2494	50.185729 , 23.293613
2495	50.186080 , 23.293633
2496	50.186285 , 23.293518
2497	50.186920 , 23.293648
2498	50.187141 , 23.293919
2499	50.187227 , 23.294002
2500	50.187309 , 23.294121
2501	50.187448 , 23.294168
2502	50.187981 , 23.294314
2503	50.188141 , 23.294408
2504	50.188487 , 23.294661
2505	50.189657 , 23.295515
2506	50.190401 , 23.296049
2507	50.191318 , 23.296239
2508	50.191611 , 23.296302
2509	50.192805 , 23.296568

Nr pkt.	Współrzędne punktów załamania granicy w układzie WGS84
2510	50.193985 , 23.296832
2511	50.194530 , 23.296955
2512	50.195190 , 23.296922
2513	50.195466 , 23.296328
2514	50.195682 , 23.295918
2515	50.195799 , 23.295371
2516	50.196098 , 23.294540
2517	50.196234 , 23.294164
2518	50.196530 , 23.293485
2519	50.196641 , 23.293151
2520	50.196763 , 23.292546
2521	50.197069 , 23.292417
2522	50.197115 , 23.292255
2523	50.197183 , 23.292099
2524	50.198368 , 23.291368
2525	50.198853 , 23.291067
2526	50.199567 , 23.289966
2527	50.200463 , 23.288160
2528	50.200569 , 23.287658
2529	50.200494 , 23.287650
2530	50.200776 , 23.286788
2531	50.201111 , 23.285637
2532	50.201336 , 23.285565
2533	50.201576 , 23.285371
2534	50.201875 , 23.285175
2535	50.202147 , 23.285178
2536	50.202194 , 23.285015
2537	50.202555 , 23.284234
2538	50.202624 , 23.283997
2539	50.203219 , 23.282886
2540	50.203372 , 23.282530
2541	50.203543 , 23.282156
2542	50.203594 , 23.281821
2543	50.204131 , 23.280673
2544	50.204170 , 23.280371
2545	50.204371 , 23.279872
2546	50.204456 , 23.279811
2547	50.204699 , 23.279334
2548	50.204951 , 23.278700
2549	50.205032 , 23.278408
2550	50.205175 , 23.277348
2551	50.205435 , 23.276238
2552	50.205440 , 23.276001
2553	50.205411 , 23.275502
2554	50.205396 , 23.275164
2555	50.205336 , 23.274927

Nr pkt.	Współrzędne punktów załamania granicy w układzie WGS84
2556	50.205140 , 23.274276
2557	50.205009 , 23.273837
2558	50.204893 , 23.273571
2559	50.204764 , 23.273278
2560	50.204703 , 23.273054
2561	50.204753 , 23.272627
2562	50.204786 , 23.272411
2563	50.205297 , 23.272649
2564	50.205308 , 23.272605
2565	50.205428 , 23.272595
2566	50.205432 , 23.271981
2567	50.205433 , 23.271471
2568	50.205435 , 23.271017
2569	50.205422 , 23.270000
2570	50.205427 , 23.268875
2571	50.205378 , 23.267992
2572	50.205245 , 23.265489
2573	50.205182 , 23.264398
2574	50.205137 , 23.263751
2575	50.205154 , 23.263590
2576	50.205122 , 23.263306
2577	50.205054 , 23.262170
2578	50.205016 , 23.261457
2579	50.204979 , 23.260690
2580	50.204951 , 23.260301
2581	50.204814 , 23.259109
2582	50.204771 , 23.258688
2583	50.205818 , 23.258437
2584	50.206187 , 23.258401
2585	50.206897 , 23.258303
2586	50.207461 , 23.258213
2587	50.207505 , 23.257160
2588	50.207518 , 23.256728
2589	50.207535 , 23.256319
2590	50.207565 , 23.255633
2591	50.207576 , 23.255073
2592	50.207594 , 23.253753
2593	50.208904 , 23.253516
2594	50.208876 , 23.253050
2595	50.208858 , 23.252699
2596	50.208832 , 23.252252
2597	50.208807 , 23.251924
2598	50.208309 , 23.250694
2599	50.207447 , 23.248602
2600	50.207131 , 23.247839
2601	50.206814 , 23.246512

Nr pkt.	Współrzędne punktów załamania granicy w układzie WGS84
2602	50.206800 , 23.245354
2603	50.206881 , 23.244801
2604	50.207106 , 23.244289
2605	50.207360 , 23.243050
2606	50.207482 , 23.242830
2607	50.207447 , 23.241685
2608	50.207338 , 23.240259
2609	50.206957 , 23.238851
2610	50.206537 , 23.237461
2611	50.206515 , 23.236919
2612	50.206375 , 23.236544
2613	50.206012 , 23.235997
2614	50.205670 , 23.235098
2615	50.205531 , 23.234728
2616	50.205414 , 23.234233
2617	50.205588 , 23.233197
2618	50.205014 , 23.231316
2619	50.204790 , 23.230591
2620	50.204699 , 23.230056
2621	50.204600 , 23.229475
2622	50.204508 , 23.229082
2623	50.204344 , 23.228408
2624	50.204237 , 23.227933
2625	50.204003 , 23.226908
2626	50.203426 , 23.225202
2627	50.202968 , 23.223822
2628	50.202382 , 23.222068
2629	50.201894 , 23.220630
2630	50.201494 , 23.219451
2631	50.201214 , 23.218629
2632	50.200966 , 23.217902
2633	50.200851 , 23.217740
2634	50.200880 , 23.217188
2635	50.200926 , 23.216242
2636	50.201006 , 23.214815
2637	50.200603 , 23.213223
2638	50.200451 , 23.212590
2639	50.200409 , 23.212577
2640	50.200067 , 23.212838
2641	50.199964 , 23.212500
2642	50.199890 , 23.212183
2643	50.199847 , 23.211868
2644	50.199862 , 23.211583
2645	50.199981 , 23.210776
2646	50.200018 , 23.210751
2647	50.200024 , 23.210668

Nr pkt.	Współrzędne punktów załamania granicy w układzie WGS84
2648	50.200132 , 23.210579
2649	50.200272 , 23.210349
2650	50.200496 , 23.209990
2651	50.200517 , 23.209925
2652	50.200545 , 23.209667
2653	50.200124 , 23.209661
2654	50.199964 , 23.208891
2655	50.200029 , 23.208845
2656	50.199880 , 23.208385
2657	50.199839 , 23.208212
2658	50.199572 , 23.208431
2659	50.199480 , 23.208164
2660	50.199416 , 23.208009
2661	50.199162 , 23.207538
2662	50.199445 , 23.207199
2663	50.199405 , 23.207117
2664	50.199346 , 23.206898
2665	50.199322 , 23.206742
2666	50.199317 , 23.206595
2667	50.199292 , 23.206191
2668	50.199496 , 23.206233
2669	50.199711 , 23.206034
2670	50.199980 , 23.206133
2671	50.200040 , 23.205851
2672	50.200063 , 23.205636
2673	50.200115 , 23.205639
2674	50.200126 , 23.205285
2675	50.200164 , 23.205093
2676	50.200267 , 23.204505
2677	50.200386 , 23.203995
2678	50.200480 , 23.202919
2679	50.200637 , 23.201931
2680	50.200681 , 23.201405
2681	50.200783 , 23.200522
2682	50.200864 , 23.199989
2683	50.200965 , 23.199270
2684	50.201053 , 23.198725
2685	50.201110 , 23.198394
2686	50.201164 , 23.197937
2687	50.201317 , 23.196994
2688	50.201534 , 23.195805
2689	50.201950 , 23.195365
2690	50.202101 , 23.195374
2691	50.202151 , 23.195031
2692	50.202271 , 23.194807
2693	50.202573 , 23.194098

Nr pkt.	Współrzędne punktów załamania granicy w układzie WGS84
2694	50.202657 , 23.193986
2695	50.202808 , 23.193915
2696	50.202877 , 23.193734
2697	50.203188 , 23.192707
2698	50.203987 , 23.190472
2699	50.204181 , 23.189905
2700	50.204453 , 23.189246
2701	50.204695 , 23.188374
2702	50.204104 , 23.187449
2703	50.203686 , 23.186786
2704	50.204244 , 23.184820
2705	50.204462 , 23.184382
2706	50.204640 , 23.183959
2707	50.204685 , 23.181739
2708	50.204869 , 23.180630
2709	50.204643 , 23.180001
2710	50.204456 , 23.179679
2711	50.204400 , 23.179596
2712	50.204893 , 23.179700
2713	50.204892 , 23.179256
2714	50.204920 , 23.178860
2715	50.205075 , 23.177746
2716	50.205247 , 23.177043
2717	50.205531 , 23.175857
2718	50.205618 , 23.175485
2719	50.205838 , 23.174476
2720	50.206041 , 23.173955
2721	50.206121 , 23.173811
2722	50.206472 , 23.173580
2723	50.206973 , 23.173375
2724	50.207649 , 23.172989
2725	50.207811 , 23.172421
2726	50.208016 , 23.171814
2727	50.208204 , 23.171217
2728	50.208312 , 23.170894
2729	50.208446 , 23.170369
2730	50.208552 , 23.170010
2731	50.208666 , 23.169630
2732	50.209025 , 23.167951
2733	50.209225 , 23.167283
2734	50.209339 , 23.166885
2735	50.209444 , 23.166452
2736	50.209461 , 23.165982
2737	50.209381 , 23.164965
2738	50.209322 , 23.164554
2739	50.209181 , 23.163916

Nr pkt.	Współrzędne punktów załamania granicy w układzie WGS84
2740	50.209074 , 23.163447
2741	50.209006 , 23.163239
2742	50.208887 , 23.162986
2743	50.208860 , 23.162809
2744	50.208952 , 23.161334
2745	50.208951 , 23.160675
2746	50.208883 , 23.160308
2747	50.208791 , 23.159602
2748	50.208739 , 23.158764
2749	50.208761 , 23.157836
2750	50.208763 , 23.157584
2751	50.208870 , 23.156999
2752	50.208925 , 23.156482
2753	50.208929 , 23.156133
2754	50.208913 , 23.156015
2755	50.208721 , 23.155236
2756	50.208658 , 23.154250
2757	50.208584 , 23.153009
2758	50.208591 , 23.152700
2759	50.208755 , 23.151670
2760	50.208781 , 23.151127
2761	50.208735 , 23.150887
2762	50.208627 , 23.150604
2763	50.208331 , 23.150048
2764	50.208077 , 23.149463
2765	50.208022 , 23.149239
2766	50.208022 , 23.148931
2767	50.208090 , 23.148343
2768	50.208153 , 23.148034
2769	50.208260 , 23.147686
2770	50.208443 , 23.147381
2771	50.208573 , 23.146449
2772	50.208612 , 23.146052
2773	50.208404 , 23.145164
2774	50.208352 , 23.144798
2775	50.208356 , 23.144487
2776	50.208463 , 23.143864
2777	50.208583 , 23.143289
2778	50.208729 , 23.142815
2779	50.208918 , 23.142426
2780	50.209094 , 23.142132
2781	50.209114 , 23.142110
2782	50.209265 , 23.141818
2783	50.209531 , 23.141478
2784	50.209783 , 23.141207
2785	50.210063 , 23.140954

Nr pkt.	Współrzędne punktów załamania granicy w układzie WGS84
2786	50.210299 , 23.140755
2787	50.210997 , 23.140313
2788	50.211413 , 23.139865
2789	50.211812 , 23.139368
2790	50.212131 , 23.139123
2791	50.212503 , 23.139021
2792	50.212954 , 23.138871
2793	50.213454 , 23.138509
2794	50.213777 , 23.138122
2795	50.214279 , 23.137410
2796	50.214437 , 23.137261
2797	50.214868 , 23.137043
2798	50.215212 , 23.136884
2799	50.215607 , 23.136756
2800	50.215836 , 23.136666
2801	50.216404 , 23.136159
2802	50.216706 , 23.135891
2803	50.217367 , 23.135134
2804	50.217662 , 23.134869
2805	50.218083 , 23.134420
2806	50.218391 , 23.134041
2807	50.218700 , 23.133621
2808	50.218838 , 23.133406
2809	50.219156 , 23.132636
2810	50.219503 , 23.132124
2811	50.219807 , 23.131759
2812	50.220425 , 23.132073
2813	50.220873 , 23.132322
2814	50.222171 , 23.133016
2815	50.222825 , 23.133366
2816	50.223342 , 23.133633
2817	50.223734 , 23.133841
2818	50.224373 , 23.134156
2819	50.225028 , 23.134488
2820	50.225435 , 23.134704
2821	50.226639 , 23.135347
2822	50.227256 , 23.135683
2823	50.227852 , 23.135996
2824	50.229020 , 23.136617
2825	50.230176 , 23.137208
2826	50.230723 , 23.137490
2827	50.231365 , 23.137813
2828	50.232531 , 23.138409
2829	50.233586 , 23.138947
2830	50.233961 , 23.139140
2831	50.234503 , 23.139419

Nr pkt.	Współrzędne punktów załamania granicy w układzie WGS84
2832	50.234822 , 23.139593
2833	50.235333 , 23.139853
2834	50.235776 , 23.140082
2835	50.236412 , 23.140411
2836	50.237805 , 23.135786
2837	50.238501 , 23.135877
2838	50.239095 , 23.135724
2839	50.239383 , 23.135754
2840	50.239784 , 23.135589
2841	50.240089 , 23.135734
2842	50.240050 , 23.135945
2843	50.240326 , 23.136260
2844	50.240562 , 23.136141
2845	50.240613 , 23.136024
2846	50.240664 , 23.136053
2847	50.240750 , 23.136229
2848	50.240899 , 23.136223
2849	50.241039 , 23.135928
2850	50.241873 , 23.136334
2851	50.242258 , 23.136291
2852	50.242438 , 23.136266
2853	50.242731 , 23.136651
2854	50.243264 , 23.137350
2855	50.243186 , 23.137820
2856	50.243104 , 23.138322
2857	50.243008 , 23.138861
2858	50.242957 , 23.139200
2859	50.242886 , 23.139632
2860	50.242754 , 23.140344
2861	50.242480 , 23.141384
2862	50.242309 , 23.142061
2863	50.242087 , 23.142994
2864	50.242210 , 23.143101
2865	50.242499 , 23.143456
2866	50.243103 , 23.144202
2867	50.243487 , 23.144666
2868	50.243744 , 23.144975
2869	50.243989 , 23.145280
2870	50.244307 , 23.145678
2871	50.244564 , 23.145992
2872	50.244941 , 23.146457
2873	50.245102 , 23.146656
2874	50.245467 , 23.147124
2875	50.245663 , 23.147367
2876	50.246057 , 23.147857
2877	50.246471 , 23.148396

Nr pkt.	Współrzędne punktów załamania granicy w układzie WGS84
2878	50.246580 , 23.148542
2879	50.247187 , 23.149357
2880	50.247389 , 23.149631
2881	50.247739 , 23.150115
2882	50.248096 , 23.150606
2883	50.248309 , 23.150896
2884	50.248831 , 23.151608
2885	50.249386 , 23.152846
2886	50.249699 , 23.153555
2887	50.250016 , 23.154284
2888	50.250440 , 23.155508
2889	50.250710 , 23.155878
2890	50.250985 , 23.156532
2891	50.251137 , 23.156881
2892	50.251392 , 23.157466
2893	50.251639 , 23.158233
2894	50.252227 , 23.158490
2895	50.252825 , 23.159035
2896	50.253366 , 23.159606
2897	50.253497 , 23.159746
2898	50.254107 , 23.160437
2899	50.254974 , 23.161132
2900	50.255326 , 23.161415
2901	50.256267 , 23.162173
2902	50.256828 , 23.162636
2903	50.257434 , 23.163146
2904	50.258400 , 23.163996
2905	50.258908 , 23.164237
2906	50.259249 , 23.164393
2907	50.259614 , 23.164572
2908	50.260798 , 23.165141
2909	50.261950 , 23.165698
2910	50.262620 , 23.166188
2911	50.263020 , 23.166459
2912	50.263312 , 23.166721
2913	50.263552 , 23.166963
2914	50.263990 , 23.167466
2915	50.264820 , 23.166151
2916	50.264861 , 23.166067
2917	50.264970 , 23.165192
2918	50.265013 , 23.165073
2919	50.265596 , 23.164127
2920	50.265919 , 23.163622
2921	50.266121 , 23.163298
2922	50.266500 , 23.162687
2923	50.266629 , 23.162484

Nr pkt.	Współrzędne punktów załamania granicy w układzie WGS84
2924	50.266602 , 23.162312
2925	50.266608 , 23.162215
2926	50.266797 , 23.160606
2927	50.266964 , 23.159190
2928	50.267151 , 23.157343
2929	50.267303 , 23.155924
2930	50.267345 , 23.155527
2931	50.267442 , 23.154620
2932	50.267561 , 23.153452
2933	50.268325 , 23.153239
2934	50.268863 , 23.153089
2935	50.268917 , 23.150958
2936	50.268981 , 23.148312
2937	50.268989 , 23.148241
2938	50.268982 , 23.148083
2939	50.269050 , 23.143467
2940	50.269074 , 23.141109
2941	50.269093 , 23.137951
2942	50.269098 , 23.134525
2943	50.269105 , 23.132798
2944	50.269413 , 23.131258
2945	50.269519 , 23.130701
2946	50.269367 , 23.130324
2947	50.269285 , 23.129815
2948	50.269340 , 23.129618
2949	50.269479 , 23.128901
2950	50.269635 , 23.128060
2951	50.269796 , 23.127332
2952	50.269932 , 23.126724
2953	50.269998 , 23.126436
2954	50.270064 , 23.126308
2955	50.270146 , 23.125832
2956	50.270297 , 23.124988
2957	50.270381 , 23.124457
2958	50.270460 , 23.123980
2959	50.270575 , 23.123405
2960	50.270685 , 23.122922
2961	50.270786 , 23.122604
2962	50.270109 , 23.122215
2963	50.269220 , 23.121623
2964	50.268844 , 23.121373
2965	50.268434 , 23.121078
2966	50.268197 , 23.120931
2967	50.267462 , 23.120337
2968	50.267107 , 23.120080
2969	50.266802 , 23.119849

Nr pkt.	Współrzędne punktów załamania granicy w układzie WGS84
2970	50.266444 , 23.119552
2971	50.265937 , 23.119157
2972	50.265019 , 23.118364
2973	50.264320 , 23.117696
2974	50.263866 , 23.117215
2975	50.263389 , 23.116696
2976	50.263103 , 23.117052
2977	50.262794 , 23.117335
2978	50.262556 , 23.117469
2979	50.262353 , 23.117812
2980	50.262130 , 23.118232
2981	50.261626 , 23.117687
2982	50.261071 , 23.116859
2983	50.260751 , 23.116247
2984	50.260416 , 23.115805
2985	50.260146 , 23.115437
2986	50.259583 , 23.114561
2987	50.259293 , 23.114130
2988	50.258710 , 23.113234
2989	50.258546 , 23.112978
2990	50.258141 , 23.112274
2991	50.257693 , 23.111511
2992	50.257603 , 23.111340
2993	50.256983 , 23.110187
2994	50.257147 , 23.109812
2995	50.257297 , 23.109403
2996	50.257426 , 23.109164
2997	50.257603 , 23.109022
2998	50.257884 , 23.108682
2999	50.258108 , 23.108382
3000	50.258223 , 23.108134
3001	50.258337 , 23.107862
3002	50.258634 , 23.107381
3003	50.258863 , 23.107008
3004	50.259277 , 23.106090
3005	50.259840 , 23.104900
3006	50.260728 , 23.105874
3007	50.260893 , 23.105209
3008	50.261341 , 23.103716
3009	50.261656 , 23.103021
3010	50.261760 , 23.102850
3011	50.262089 , 23.102534
3012	50.262185 , 23.102400
3013	50.262536 , 23.101413
3014	50.263152 , 23.100567
3015	50.263330 , 23.100335

Nr pkt.	Współrzędne punktów załamania granicy w układzie WGS84
3016	50.263845 , 23.099753
3017	50.264352 , 23.099249
3018	50.264393 , 23.099219
3019	50.264447 , 23.099129
3020	50.264877 , 23.098386
3021	50.265116 , 23.097990
3022	50.265023 , 23.097436
3023	50.264878 , 23.096594
3024	50.264873 , 23.096487
3025	50.265187 , 23.095865
3026	50.265486 , 23.095227
3027	50.265650 , 23.094825
3028	50.265787 , 23.094486
3029	50.265848 , 23.094341
3030	50.265927 , 23.094152
3031	50.265987 , 23.093968
3032	50.266064 , 23.093730
3033	50.266196 , 23.093242
3034	50.266308 , 23.092279
3035	50.266557 , 23.091065
3036	50.266724 , 23.090250
3037	50.266742 , 23.090288
3038	50.267174 , 23.089644
3039	50.267236 , 23.089484
3040	50.267254 , 23.089344
3041	50.267359 , 23.089321
3042	50.267336 , 23.089228
3043	50.267416 , 23.089219
3044	50.267475 , 23.089160
3045	50.267606 , 23.089110
3046	50.267649 , 23.088984
3047	50.267821 , 23.088839
3048	50.267840 , 23.088520
3049	50.267915 , 23.088120
3050	50.267915 , 23.087826
3051	50.267886 , 23.087656
3052	50.267713 , 23.087194
3053	50.268044 , 23.086948
3054	50.268199 , 23.086822
3055	50.268385 , 23.086734
3056	50.268874 , 23.086430
3057	50.268940 , 23.086345
3058	50.269051 , 23.086311
3059	50.269122 , 23.086262
3060	50.269182 , 23.086216
3061	50.269239 , 23.086150

Nr pkt.	Współrzędne punktów załamania granicy w układzie WGS84
3062	50.269959 , 23.085739
3063	50.270246 , 23.085575
3064	50.270563 , 23.085393
3065	50.270675 , 23.085269
3066	50.270862 , 23.085091
3067	50.270904 , 23.084993
3068	50.271079 , 23.084580
3069	50.271100 , 23.084411
3070	50.271137 , 23.084352
3071	50.271149 , 23.084221
3072	50.271171 , 23.084021
3073	50.271145 , 23.083677
3074	50.271137 , 23.083530
3075	50.271112 , 23.083129
3076	50.271058 , 23.083004
3077	50.271045 , 23.082852
3078	50.271048 , 23.082806
3079	50.271026 , 23.082603
3080	50.271011 , 23.082531
3081	50.270969 , 23.082110
3082	50.270960 , 23.081648
3083	50.270958 , 23.081553
3084	50.271045 , 23.081341
3085	50.271040 , 23.081300
3086	50.271171 , 23.081081
3087	50.271331 , 23.080884
3088	50.271425 , 23.080807
3089	50.272029 , 23.080363
3090	50.273201 , 23.079501
3091	50.274208 , 23.078772
3092	50.275582 , 23.077765
3093	50.275634 , 23.077726
3094	50.275727 , 23.077664
3095	50.275750 , 23.077643
3096	50.275924 , 23.077519
3097	50.276052 , 23.077442
3098	50.276168 , 23.077295
3099	50.276379 , 23.076930
3100	50.276429 , 23.076798
3101	50.276797 , 23.076231
3102	50.276942 , 23.076055
3103	50.277203 , 23.075916
3104	50.277828 , 23.075787
3105	50.277937 , 23.075733
3106	50.278032 , 23.075710
3107	50.278079 , 23.075626

Nr pkt.	Współrzędne punktów załamania granicy w układzie WGS84
3108	50.278185 , 23.075456
3109	50.278499 , 23.075222
3110	50.278615 , 23.075291
3111	50.278711 , 23.075148
3112	50.278792 , 23.074989
3113	50.279349 , 23.074159
3114	50.280001 , 23.073189
3115	50.280288 , 23.071993
3116	50.281047 , 23.068842
3117	50.281493 , 23.066599
3118	50.281813 , 23.065310
3119	50.282407 , 23.062931
3120	50.282624 , 23.061599
3121	50.283040 , 23.060403
3122	50.283444 , 23.058805
3123	50.283824 , 23.057328
3124	50.284188 , 23.055863
3125	50.284565 , 23.054398
3126	50.284921 , 23.052932
3127	50.285305 , 23.051461

Nr pkt.	Współrzędne punktów załamania granicy w układzie WGS84
3128	50.285668 , 23.049992
3129	50.286152 , 23.048585
3130	50.286339 , 23.047578
3131	50.286920 , 23.047474
3132	50.287045 , 23.047446
3133	50.287317 , 23.047337
3134	50.287225 , 23.046876
3135	50.287788 , 23.046724
3136	50.287871 , 23.047398
3137	50.288027 , 23.048538
3138	50.288140 , 23.048490
3139	50.289363 , 23.047999
3140	50.289664 , 23.047908
3141	50.289925 , 23.047894
3142	50.291158 , 23.048087
3143	50.292362 , 23.048274
3144	50.293250 , 23.048408
3145	50.293583 , 23.048472
3146	50.294764 , 23.048712
3147	50.296010 , 23.048965

Nr pkt.	Współrzędne punktów załamania granicy w układzie WGS84
3148	50.296076 , 23.048961
3149	50.297171 , 23.049207
3150	50.297384 , 23.049249
3151	50.298379 , 23.049385
3152	50.299631 , 23.049577
3153	50.300131 , 23.049639
3154	50.300828 , 23.049697
3155	50.301170 , 23.049723
3156	50.302068 , 23.049846
3157	50.302845 , 23.049948
3158	50.303085 , 23.049898
3159	50.303491 , 23.050596
3160	50.303591 , 23.050747
3161	50.304324 , 23.051825
3162	50.304617 , 23.052341
3163	50.305435 , 23.053810
3164	50.305823 , 23.054134
3165	50.306205 , 23.054253
3166	50.306620 , 23.054280
3167	50.306766 , 23.054371

Nr pkt.	Współrzędne punktów załamania granicy w układzie WGS84
3168	50.306789 , 23.054347
3169	50.307030 , 23.054685
3170	50.307289 , 23.055051
3171	50.307420 , 23.055590
3172	50.307848 , 23.055811
3173	50.309345 , 23.056476
3174	50.309491 , 23.056686
3175	50.310113 , 23.057025
3176	50.310647 , 23.057158
3177	50.311858 , 23.057871
3178	50.312978 , 23.058663
3179	50.313608 , 23.059085
3180	50.314705 , 23.059826
3181	50.315791 , 23.060539
3182	50.316378 , 23.061232
3183	50.318132 , 23.063616
3184	50.319250 , 23.065152

Uwagi:

1. Pomiedzy punktem Nr 1 a punktem Nr 604 granica Roztoczańskiego Obszaru Chronionego Krajobrazu pokrywa się z południową granicą Parku Krajobrazowego Puszczy Solskiej.
2. Pomiedzy punktami Nr 604 a punktem Nr 1029 granica Roztoczańskiego Obszaru Chronionego Krajobrazu pokrywa się z północną granicą administracyjną województwa podkarpackiego.
3. Pomiedzy punktem Nr 1029 a punktem Nr 2300 granica Roztoczańskiego Obszaru Chronionego Krajobrazu pokrywa się z zachodnią i południową granicą Południworoztoczańskiego Parku Krajobrazowego.
4. Pomiedzy punktem Nr 2300 a punktem Nr 2319 granica Roztoczańskiego Obszaru Chronionego Krajobrazu pokrywa się z e wschodnią granicą państwa.
5. Pomiedzy punktami Nr 2338 a punktem Nr 2780 granica Roztoczańskiego Obszaru Chronionego Krajobrazu pokrywa się z granicami administracyjnymi Gminy Horyniec, i Gminy Cieszanów.
6. Pomiedzy punktami Nr 2811 a punktem Nr 3052 granica Roztoczańskiego Obszaru Chronionego Krajobrazu pokrywa się z granicami administracyjnymi miejscowości Cieszanów, Folwarki i Nowy Lubliniec.
7. Pomiedzy punktami Nr 3158, punktem Nr 3184 a punktem Nr 1 granica Roztoczańskiego Obszaru Chronionego Krajobrazu pokrywa się z granicami administracyjnymi województwa podkarpackiego.