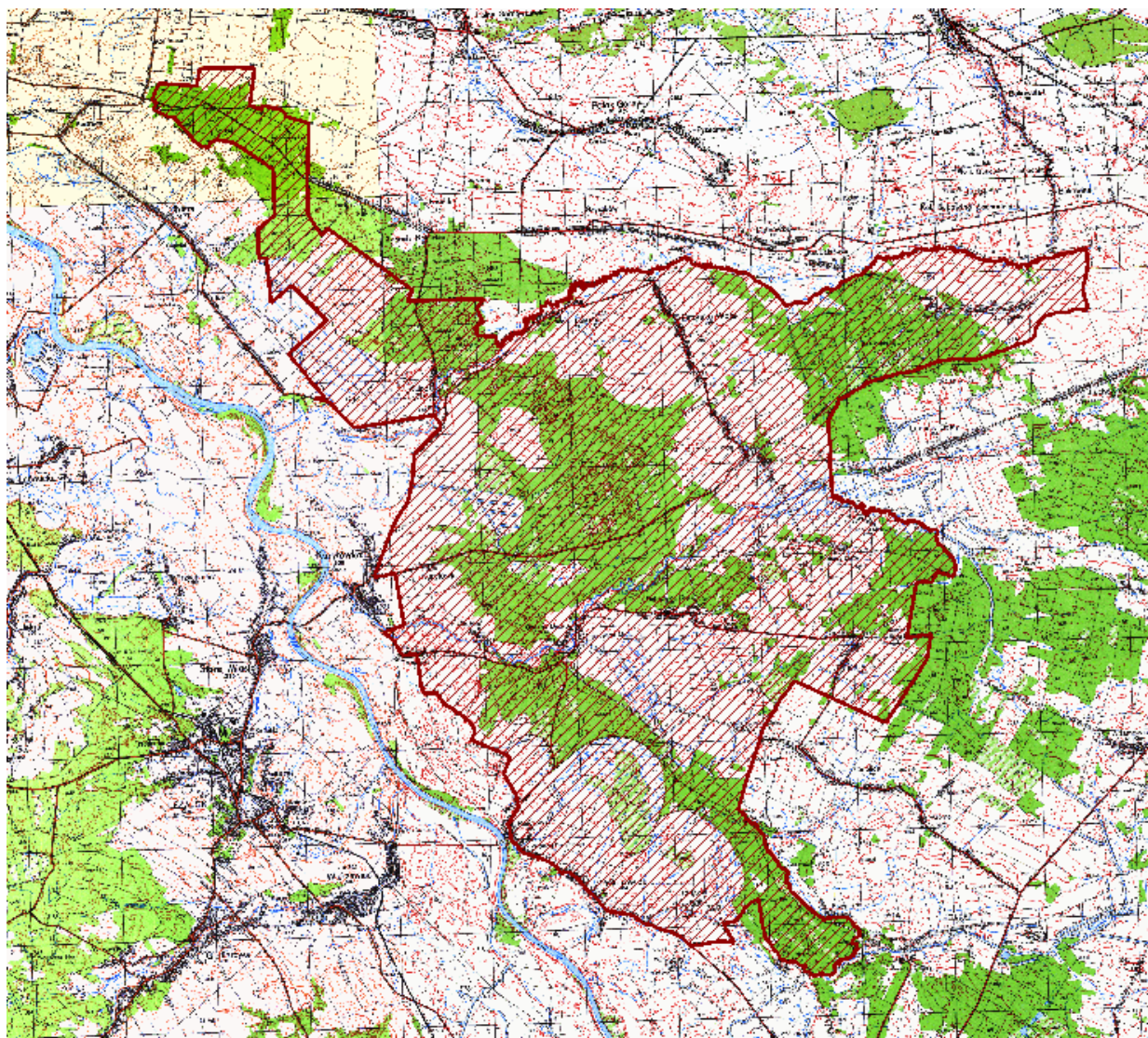


ZAŁĄCZNIK NR 1

MAPA POGLĄDOWA USYTUOWANIA KURYŁOWSKIEGO OBSZARU CHRONIONEGO KRAJOBRAZU



Mapa topograficzna w skali 1: 50 000 oraz plik wektorowy w formacie ESRI Shapefile w układzie PUVG_92, stanowiący graficzne przedstawienie punktów załamania granicy, dostępne w Departamencie Ochrony Środowiska Urzędu Marszałkowskiego Województwa Podkarpackiego w Rzeszowie

Załącznik nr 2

Tekstowy opis granic Kuryłowskiego Obszaru Chronionego Krajobrazu

1. Ilekroć w opisie granicy jest mowa o „punkcie Nr...” należy przez to rozumieć punkt załamania granicy o współrzędnych wykazanych w załączniku nr 3.

2. Począwszy od północy granica Kuryłowskiego Obszaru Chronionego Krajobrazu umownie rozpoczyna się w miejscu przecięcia się północno-zachodniej granicy administracyjnej gminy Kuryłówka z drogą wojewódzką Kopki-Cieszanów w okolicy wschodniego skraju miejscowości Kustrawa (punkt Nr 1) i biegnie linią ciągłą, kolejnymi, opisanymi niżej, odcinkami:

- 1) w kierunku wschodnim, a następnie południowym granicą administracyjną Gminy Kuryłówka (do punktu Nr 2245), z zastrzeżeniem pkt.3,
- 2) w kierunku południowo-wschodnim a następnie zachodnim, wschodnią i południową granicą administracyjną Gminy Leżajsk do miejsca przecięcia się z drogą lokalną Leżajsk-Rzuchów (punkt Nr 2493), z zastrzeżeniem pkt.4,
- 3) w kierunku północno-zachodnim ww. drogą lokalną do skrzyżowania w miejscowości Rzuchów (punkt Nr 2573),

Opisany fragment granicy Obszaru biegnący wzdłuż wschodnich granic administracyjnych gmin Kuryłówka i Leżajsk na odcinku od rzeki Złota (punkt Nr 2106) do drogi lokalnej relacji Leżajsk-Rzuchów, (punkt Nr 2493) stanowi jednocześnie północno-zachodni fragment granicy Sieniawskiego Obszaru Chronionego Krajobrazu.

- 4) w kierunku północno-wschodnim drogą lokalną Rzuchów-Dąbrowica Duża do skraju zabudowy miejscowości Rzuchów, w kierunku północnym drogami polnymi do miejsca położonego w centralnej części zabudowy miejscowości Tarnawiec (punkt Nr 2665),
- 5) w kierunku północno-zachodnim, drogami lokalnymi i gruntowymi do miejsca skrzyżowania z drogą wojewódzką Naklik-Szklary w miejscowości Kuryłówka (punkt Nr 2697),
- 6) w kierunku północno-wschodnim drogą wojewódzką Naklik-Szklary do miejscowości Kulno,
- 7) w kierunku zachodnim drogą powiatową Kulno-Łazów do miejsca przecięcia się z północno-zachodnią granicą administracyjną gminy Kuryłówka (punkt Nr 2790),
- 8) w kierunku północnym zachodnią granicą administracyjną Gminy Kuryłówka do miejsca przecięcia się z drogą wojewódzką Kopki-Cieszanów w okolicy wschodniego skraju miejscowości Kustrawa, skąd rozpoczęto opis granicy, z zastrzeżeniem pkt.3.

3. W przypadku rozbieżności między przebiegiem granicy Obszaru wyznaczonym punktami jej załamania, pomiędzy punktem Nr 2790, punktem Nr 2897 , punktem Nr 1 i punktem Nr 2245 a faktycznym przebiegiem granicy administracyjnej Gminy Kuryłówka, za prawidłowy przebieg granicy Obszaru należy uznać granicę administracyjną Gminy Kuryłówka.

4. W przypadku rozbieżności między przebiegiem granicy Obszaru wyznaczonym punktami jej załamania, pomiędzy punktem Nr 2245, punktem Nr 2493 a faktycznym przebiegiem granicy administracyjnej Gminy Leżajsk za prawidłowy przebieg granicy Obszaru należy uznać granicę administracyjną Gminy Leżajsk.

Współrzędne punktów załamania granicy Kuryłowskiego Obszaru Chronionego Krajobrazu

Nr pkt.	Współrzędne punktów załamania granicy w układzie WGS84
0	50.396655 , 22.407037
1	50.396788 , 22.407129
2	50.397130 , 22.407326
3	50.397122 , 22.407727
4	50.397627 , 22.407797
5	50.397590 , 22.408522
6	50.397444 , 22.410989
7	50.397394 , 22.412185
8	50.397301 , 22.413120
9	50.397294 , 22.413395
10	50.397257 , 22.413810
11	50.397226 , 22.414282
12	50.397199 , 22.414759
13	50.397178 , 22.414744
14	50.397130 , 22.415117
15	50.396843 , 22.418574
16	50.396853 , 22.418881
17	50.396885 , 22.419396
18	50.397972 , 22.419638
19	50.398199 , 22.419695
20	50.398299 , 22.419885
21	50.398387 , 22.419965
22	50.399092 , 22.420165
23	50.400105 , 22.420452
24	50.400166 , 22.420502
25	50.400175 , 22.421580
26	50.400151 , 22.422903
27	50.400131 , 22.423743
28	50.400131 , 22.424529
29	50.400084 , 22.426562
30	50.400070 , 22.426967
31	50.400033 , 22.428964
32	50.400030 , 22.430307
33	50.400035 , 22.430771
34	50.400040 , 22.431415
35	50.399994 , 22.432788
36	50.399941 , 22.434179
37	50.399864 , 22.435073
38	50.399863 , 22.435413
39	50.399717 , 22.437197
40	50.398786 , 22.436908

Nr pkt.	Współrzędne punktów załamania granicy w układzie WGS84
41	50.398119 , 22.436754
42	50.396907 , 22.436389
43	50.395529 , 22.435989
44	50.395447 , 22.435948
45	50.393814 , 22.435544
46	50.392535 , 22.435217
47	50.392477 , 22.435186
48	50.392344 , 22.436068
49	50.392169 , 22.436784
50	50.392130 , 22.436833
51	50.392108 , 22.437827
52	50.391560 , 22.438412
53	50.391627 , 22.438687
54	50.392402 , 22.438909
55	50.392290 , 22.439992
56	50.391904 , 22.441644
57	50.391520 , 22.444638
58	50.390649 , 22.445979
59	50.390128 , 22.445846
60	50.389806 , 22.447289
61	50.389510 , 22.448589
62	50.388885 , 22.451421
63	50.388589 , 22.452912
64	50.387203 , 22.452757
65	50.385766 , 22.452597
66	50.385263 , 22.452547
67	50.383324 , 22.452333
68	50.382088 , 22.452206
69	50.381382 , 22.452134
70	50.380940 , 22.452076
71	50.380568 , 22.452026
72	50.379449 , 22.451922
73	50.377797 , 22.451650
74	50.377721 , 22.451649
75	50.377508 , 22.451636
76	50.376808 , 22.451616
77	50.376433 , 22.451599
78	50.375827 , 22.451588
79	50.374996 , 22.451555
80	50.374194 , 22.451525
81	50.373715 , 22.451507

Nr pkt.	Współrzędne punktów załamania granicy w układzie WGS84
82	50.372961 , 22.451482
83	50.371804 , 22.451453
84	50.371228 , 22.451433
85	50.370801 , 22.451412
86	50.370506 , 22.451664
87	50.370114 , 22.452021
88	50.369797 , 22.452329
89	50.368919 , 22.453150
90	50.368189 , 22.453873
91	50.368071 , 22.453965
92	50.366777 , 22.455187
93	50.367554 , 22.456721
94	50.367886 , 22.457367
95	50.367099 , 22.458881
96	50.366297 , 22.460435
97	50.365138 , 22.462677
98	50.364349 , 22.464241
99	50.363752 , 22.465431
100	50.363353 , 22.466216
101	50.362433 , 22.468051
102	50.361267 , 22.470332
103	50.360646 , 22.471548
104	50.359841 , 22.473122
105	50.359282 , 22.474220
106	50.358579 , 22.475564
107	50.357959 , 22.476699
108	50.356730 , 22.479141
109	50.355769 , 22.481009
110	50.355095 , 22.482268
111	50.354248 , 22.481419
112	50.353390 , 22.480625
113	50.353116 , 22.480374
114	50.353078 , 22.482185
115	50.353079 , 22.482335
116	50.353093 , 22.483403
117	50.353076 , 22.484127
118	50.353037 , 22.486969
119	50.353034 , 22.487603
120	50.353003 , 22.489421
121	50.352997 , 22.490617
122	50.352985 , 22.491392

Nr pkt.	Współrzędne punktów załamania granicy w układzie WGS84
123	50.352965 , 22.493439
124	50.352950 , 22.494819
125	50.352942 , 22.496222
126	50.352921 , 22.498406
127	50.352882 , 22.501973
128	50.352862 , 22.503732
129	50.351893 , 22.502396
130	50.351183 , 22.501415
131	50.349251 , 22.502469
132	50.348393 , 22.503221
133	50.348075 , 22.502398
134	50.347433 , 22.501230
135	50.346204 , 22.501133
136	50.345697 , 22.501801
137	50.345542 , 22.503924
138	50.345533 , 22.504771
139	50.345450 , 22.506629
140	50.344442 , 22.506968
141	50.343993 , 22.507124
142	50.343612 , 22.506998
143	50.343624 , 22.508412
144	50.343840 , 22.508447
145	50.344003 , 22.508701
146	50.344016 , 22.508904
147	50.344090 , 22.508941
148	50.344119 , 22.508966
149	50.344220 , 22.508909
150	50.344386 , 22.508894
151	50.344490 , 22.508988
152	50.344522 , 22.509145
153	50.344504 , 22.509307
154	50.344411 , 22.509526
155	50.344478 , 22.509594
156	50.344541 , 22.509935
157	50.344437 , 22.510097
158	50.344628 , 22.510025
159	50.344777 , 22.509967
160	50.344854 , 22.509900
161	50.344954 , 22.509897
162	50.345140 , 22.510039
163	50.345153 , 22.510184

Nr pkt.	Współrzędne punktów załamania granicy w układzie WGS84	
164	50.345100	22.510367
165	50.345034	22.510449
166	50.344639	22.510714
167	50.344699	22.510893
168	50.344723	22.511083
169	50.344694	22.511348
170	50.344712	22.511455
171	50.344750	22.511511
172	50.344847	22.511593
173	50.345100	22.511584
174	50.345156	22.511483
175	50.345263	22.511165
176	50.345392	22.511135
177	50.345519	22.511247
178	50.345553	22.511628
179	50.345561	22.512013
180	50.345619	22.512289
181	50.345803	22.512414
182	50.345913	22.512524
183	50.345922	22.512718
184	50.345894	22.512863
185	50.345810	22.513055
186	50.345750	22.513129
187	50.345777	22.513172
188	50.345737	22.513341
189	50.345804	22.513446
190	50.345880	22.513660
191	50.345865	22.513856
192	50.345802	22.513996
193	50.345785	22.514443
194	50.345774	22.514574
195	50.345801	22.514656
196	50.345826	22.514855
197	50.345740	22.514975
198	50.345742	22.515081
199	50.345760	22.515193
200	50.345841	22.515212
201	50.345927	22.515119
202	50.346128	22.515159
203	50.346267	22.515205
204	50.346431	22.515291
205	50.346496	22.515519
206	50.346503	22.515787
207	50.346533	22.515920
208	50.346630	22.515952

Nr pkt.	Współrzędne punktów załamania granicy w układzie WGS84	
209	50.346772	22.515916
210	50.346912	22.515972
211	50.347149	22.515959
212	50.347260	22.516135
213	50.347288	22.516384
214	50.347285	22.516471
215	50.347307	22.516527
216	50.347371	22.516532
217	50.347530	22.516430
218	50.347716	22.516256
219	50.347844	22.516217
220	50.347889	22.516168
221	50.348028	22.515873
222	50.348162	22.515664
223	50.348258	22.515571
224	50.348395	22.515641
225	50.348508	22.515875
226	50.348495	22.516080
227	50.348430	22.516657
228	50.348562	22.516992
229	50.348631	22.517248
230	50.348699	22.517590
231	50.348722	22.517899
232	50.348612	22.518126
233	50.348474	22.518203
234	50.348416	22.518415
235	50.348498	22.518737
236	50.348528	22.518942
237	50.348600	22.518976
238	50.348744	22.518819
239	50.348874	22.518651
240	50.349026	22.518644
241	50.349129	22.518796
242	50.349177	22.519024
243	50.349159	22.519469
244	50.349196	22.519600
245	50.349276	22.519665
246	50.349372	22.519908
247	50.349340	22.520159
248	50.349341	22.520301
249	50.349384	22.520455
250	50.349549	22.520748
251	50.349645	22.520977
252	50.349816	22.521139
253	50.349941	22.521387

Nr pkt.	Współrzędne punktów załamania granicy w układzie WGS84	
254	50.350011	22.521365
255	50.350137	22.520961
256	50.350166	22.521014
257	50.350361	22.521013
258	50.350576	22.520954
259	50.350736	22.521059
260	50.350826	22.521135
261	50.350947	22.521572
262	50.350900	22.521688
263	50.350782	22.521976
264	50.350816	22.522097
265	50.350883	22.522216
266	50.351044	22.522333
267	50.351240	22.522501
268	50.351319	22.522574
269	50.351422	22.522557
270	50.351526	22.522606
271	50.351589	22.522705
272	50.351639	22.522876
273	50.351560	22.523080
274	50.351509	22.523183
275	50.351235	22.523747
276	50.351179	22.523977
277	50.351086	22.524076
278	50.350951	22.524500
279	50.350995	22.524741
280	50.350992	22.525445
281	50.350894	22.525681
282	50.350827	22.525720
283	50.350762	22.525787
284	50.350771	22.525935
285	50.351008	22.526165
286	50.351140	22.525953
287	50.351198	22.525931
288	50.351274	22.525968
289	50.351397	22.525973
290	50.351417	22.525910
291	50.351484	22.525847
292	50.351580	22.525853
293	50.351672	22.526069
294	50.351679	22.526369
295	50.351568	22.526749
296	50.351508	22.526841
297	50.351740	22.527101
298	50.351771	22.527260

Nr pkt.	Współrzędne punktów załamania granicy w układzie WGS84	
299	50.351708	22.527543
300	50.351760	22.527835
301	50.351817	22.528375
302	50.351775	22.528525
303	50.351948	22.528625
304	50.352060	22.528765
305	50.352063	22.529048
306	50.351956	22.529418
307	50.352046	22.529668
308	50.352085	22.529972
309	50.352058	22.530166
310	50.351993	22.530334
311	50.352153	22.530375
312	50.352312	22.530195
313	50.352396	22.530070
314	50.352431	22.529909
315	50.352484	22.529867
316	50.352636	22.529865
317	50.352773	22.529935
318	50.352921	22.529925
319	50.353005	22.529935
320	50.353107	22.529884
321	50.353180	22.529729
322	50.353338	22.529712
323	50.353489	22.529983
324	50.353498	22.530310
325	50.353355	22.530558
326	50.353337	22.530661
327	50.353394	22.530727
328	50.353542	22.530474
329	50.353648	22.530473
330	50.353694	22.530627
331	50.353680	22.530906
332	50.353600	22.531178
333	50.353648	22.531454
334	50.353740	22.531633
335	50.353770	22.531635
336	50.353844	22.531586
337	50.353911	22.531304
338	50.353902	22.531228
339	50.354103	22.530994
340	50.354131	22.530889
341	50.354053	22.530818
342	50.354103	22.530607
343	50.354197	22.530483

Nr pkt.	Współrzędne punktów załamania granicy w układzie WGS84
344	50.354314 , 22.530478
345	50.354404 , 22.530619
346	50.354531 , 22.530659
347	50.354601 , 22.530589
348	50.354693 , 22.530685
349	50.354687 , 22.530825
350	50.354588 , 22.531058
351	50.354544 , 22.531279
352	50.354567 , 22.531564
353	50.354630 , 22.531652
354	50.354669 , 22.531652
355	50.354637 , 22.531537
356	50.354753 , 22.531416
357	50.354845 , 22.531433
358	50.354931 , 22.531535
359	50.354898 , 22.531774
360	50.354741 , 22.531968
361	50.354508 , 22.532111
362	50.354627 , 22.532321
363	50.354762 , 22.532400
364	50.354985 , 22.532507
365	50.355047 , 22.532642
366	50.355248 , 22.532975
367	50.355290 , 22.533125
368	50.355181 , 22.533639
369	50.355172 , 22.533868
370	50.355076 , 22.534004
371	50.354948 , 22.533935
372	50.354847 , 22.533804
373	50.354796 , 22.533591
374	50.354743 , 22.533577
375	50.354679 , 22.533585
376	50.354607 , 22.533659
377	50.354573 , 22.533721
378	50.354430 , 22.533789
379	50.354276 , 22.533848
380	50.354091 , 22.533803
381	50.353979 , 22.533807
382	50.353929 , 22.533858
383	50.353847 , 22.534056
384	50.353804 , 22.534245
385	50.353811 , 22.534428
386	50.353872 , 22.534546
387	50.353888 , 22.534649
388	50.353937 , 22.534676

Nr pkt.	Współrzędne punktów załamania granicy w układzie WGS84
389	50.354018 , 22.534638
390	50.354095 , 22.534519
391	50.354250 , 22.534585
392	50.354324 , 22.534725
393	50.354351 , 22.534722
394	50.354390 , 22.534670
395	50.354573 , 22.534661
396	50.354668 , 22.534792
397	50.354697 , 22.535128
398	50.354655 , 22.535344
399	50.354540 , 22.535522
400	50.354476 , 22.535579
401	50.354455 , 22.535683
402	50.354527 , 22.535907
403	50.354535 , 22.536073
404	50.354469 , 22.536284
405	50.354473 , 22.536395
406	50.354514 , 22.536477
407	50.354602 , 22.536519
408	50.354643 , 22.536456
409	50.354709 , 22.536496
410	50.354771 , 22.536651
411	50.354826 , 22.536753
412	50.354840 , 22.536841
413	50.354810 , 22.536928
414	50.354757 , 22.536949
415	50.354575 , 22.536868
416	50.354538 , 22.536831
417	50.354508 , 22.536906
418	50.354497 , 22.536976
419	50.354597 , 22.537219
420	50.354601 , 22.537348
421	50.354521 , 22.537474
422	50.354547 , 22.537830
423	50.354545 , 22.538005
424	50.354520 , 22.538130
425	50.354543 , 22.538317
426	50.354592 , 22.538414
427	50.354715 , 22.538479
428	50.354927 , 22.538430
429	50.355016 , 22.538467
430	50.355122 , 22.538489
431	50.355246 , 22.538617
432	50.355270 , 22.538735
433	50.355220 , 22.538846

Nr pkt.	Współrzędne punktów załamania granicy w układzie WGS84
434	50.355054 , 22.538895
435	50.354933 , 22.538971
436	50.354875 , 22.538989
437	50.354906 , 22.539042
438	50.354975 , 22.539047
439	50.355052 , 22.539124
440	50.355098 , 22.539131
441	50.355160 , 22.539162
442	50.355268 , 22.539313
443	50.355401 , 22.539383
444	50.355496 , 22.539493
445	50.355528 , 22.539749
446	50.355646 , 22.540012
447	50.355674 , 22.540190
448	50.355592 , 22.540269
449	50.355434 , 22.540373
450	50.355319 , 22.540388
451	50.355254 , 22.540318
452	50.355206 , 22.540174
453	50.355177 , 22.540252
454	50.355101 , 22.540365
455	50.355080 , 22.540444
456	50.355072 , 22.540534
457	50.355088 , 22.540782
458	50.355086 , 22.540884
459	50.355105 , 22.540935
460	50.355204 , 22.541012
461	50.355281 , 22.540884
462	50.355556 , 22.540848
463	50.355726 , 22.540790
464	50.355807 , 22.540807
465	50.355857 , 22.540840
466	50.355963 , 22.540968
467	50.355985 , 22.541036
468	50.355965 , 22.541123
469	50.355769 , 22.541220
470	50.355659 , 22.541245
471	50.355644 , 22.541483
472	50.355662 , 22.541755
473	50.355707 , 22.541890
474	50.355716 , 22.542036
475	50.355684 , 22.542257
476	50.355717 , 22.542451
477	50.355740 , 22.542487
478	50.355875 , 22.542427

Nr pkt.	Współrzędne punktów załamania granicy w układzie WGS84
479	50.355980 , 22.542433
480	50.356052 , 22.542499
481	50.356087 , 22.542578
482	50.356198 , 22.542831
483	50.356213 , 22.542900
484	50.356294 , 22.543050
485	50.356333 , 22.543253
486	50.356356 , 22.543416
487	50.356264 , 22.543571
488	50.356273 , 22.543702
489	50.356242 , 22.543874
490	50.356329 , 22.543707
491	50.356741 , 22.543641
492	50.356799 , 22.543763
493	50.356778 , 22.543859
494	50.356665 , 22.543902
495	50.356466 , 22.544232
496	50.356412 , 22.544237
497	50.356339 , 22.544352
498	50.356294 , 22.544649
499	50.356472 , 22.544636
500	50.356630 , 22.544726
501	50.356987 , 22.544777
502	50.356995 , 22.545221
503	50.356948 , 22.545444
504	50.357206 , 22.545871
505	50.357270 , 22.545908
506	50.357279 , 22.546217
507	50.357198 , 22.546237
508	50.357118 , 22.546302
509	50.357077 , 22.546430
510	50.357074 , 22.546560
511	50.357180 , 22.546711
512	50.357173 , 22.546884
513	50.357098 , 22.547023
514	50.356860 , 22.547089
515	50.356817 , 22.547294
516	50.356938 , 22.547764
517	50.356969 , 22.547681
518	50.357111 , 22.547681
519	50.357169 , 22.547745
520	50.357089 , 22.548135
521	50.357095 , 22.548267
522	50.356953 , 22.548260
523	50.356939 , 22.548432

Nr pkt.	Współrzędne punktów załamania granicy w układzie WGS84
524	50.356959 , 22.548491
525	50.356908 , 22.548701
526	50.356804 , 22.548775
527	50.356795 , 22.548832
528	50.356844 , 22.548890
529	50.356961 , 22.548935
530	50.357069 , 22.548935
531	50.357133 , 22.549032
532	50.357171 , 22.549165
533	50.357150 , 22.549264
534	50.357148 , 22.549345
535	50.357168 , 22.549505
536	50.357106 , 22.549709
537	50.356973 , 22.549807
538	50.356906 , 22.550022
539	50.356827 , 22.550089
540	50.356802 , 22.550165
541	50.356872 , 22.550196
542	50.356973 , 22.550368
543	50.356923 , 22.550514
544	50.356856 , 22.550621
545	50.356935 , 22.550675
546	50.357059 , 22.550715
547	50.357093 , 22.550900
548	50.357048 , 22.551002
549	50.357034 , 22.551106
550	50.356796 , 22.551160
551	50.356766 , 22.551299
552	50.356727 , 22.551362
553	50.356622 , 22.551308
554	50.356598 , 22.551472
555	50.356587 , 22.551705
556	50.356649 , 22.551771
557	50.356685 , 22.551856
558	50.356683 , 22.551981
559	50.356611 , 22.552280
560	50.356577 , 22.552632
561	50.356474 , 22.553086
562	50.356509 , 22.553289
563	50.356484 , 22.553530
564	50.356440 , 22.553719
565	50.356457 , 22.553856
566	50.356489 , 22.554313
567	50.356447 , 22.554385
568	50.356422 , 22.554507

Nr pkt.	Współrzędne punktów załamania granicy w układzie WGS84
569	50.356381 , 22.554557
570	50.356298 , 22.554777
571	50.356298 , 22.554886
572	50.356445 , 22.555066
573	50.356495 , 22.555180
574	50.356484 , 22.555269
575	50.356571 , 22.555430
576	50.356674 , 22.555504
577	50.356755 , 22.555487
578	50.356743 , 22.555414
579	50.356782 , 22.555364
580	50.356979 , 22.555383
581	50.357061 , 22.555532
582	50.357066 , 22.555645
583	50.357153 , 22.555797
584	50.357155 , 22.555919
585	50.357073 , 22.556078
586	50.357003 , 22.556116
587	50.356988 , 22.556269
588	50.357078 , 22.556482
589	50.357090 , 22.556663
590	50.357139 , 22.556725
591	50.357255 , 22.556765
592	50.357369 , 22.556973
593	50.357417 , 22.556986
594	50.357460 , 22.557077
595	50.357408 , 22.557311
596	50.357331 , 22.557391
597	50.357177 , 22.557433
598	50.357117 , 22.557528
599	50.356937 , 22.557549
600	50.356913 , 22.557858
601	50.356942 , 22.557935
602	50.357021 , 22.557947
603	50.357034 , 22.557825
604	50.357075 , 22.557790
605	50.357155 , 22.557832
606	50.357204 , 22.558045
607	50.357141 , 22.558402
608	50.357100 , 22.558447
609	50.357141 , 22.558681
610	50.357123 , 22.558760
611	50.357187 , 22.558894
612	50.357255 , 22.558921
613	50.357328 , 22.559258

Nr pkt.	Współrzędne punktów załamania granicy w układzie WGS84
614	50.357347 , 22.559651
615	50.357394 , 22.559864
616	50.357538 , 22.560097
617	50.357517 , 22.560347
618	50.357559 , 22.560474
619	50.357709 , 22.560762
620	50.357725 , 22.560937
621	50.357840 , 22.561084
622	50.357895 , 22.561237
623	50.357839 , 22.561502
624	50.357992 , 22.561706
625	50.358016 , 22.561946
626	50.358078 , 22.562065
627	50.358180 , 22.562740
628	50.358299 , 22.562983
629	50.358316 , 22.563186
630	50.358370 , 22.563363
631	50.358449 , 22.563539
632	50.358451 , 22.563683
633	50.358573 , 22.564238
634	50.358541 , 22.564557
635	50.358644 , 22.564603
636	50.358694 , 22.564728
637	50.358753 , 22.564760
638	50.358847 , 22.564672
639	50.358981 , 22.564886
640	50.358993 , 22.565006
641	50.358969 , 22.565113
642	50.359056 , 22.565177
643	50.359064 , 22.565575
644	50.358974 , 22.565719
645	50.358980 , 22.565845
646	50.358969 , 22.565942
647	50.358837 , 22.566106
648	50.358804 , 22.566120
649	50.358760 , 22.566208
650	50.358674 , 22.566280
651	50.358410 , 22.566082
652	50.358410 , 22.566131
653	50.358468 , 22.566186
654	50.358508 , 22.566620
655	50.358459 , 22.566727
656	50.358469 , 22.566937
657	50.358411 , 22.567075
658	50.358278 , 22.567185

Nr pkt.	Współrzędne punktów załamania granicy w układzie WGS84
659	50.358016 , 22.567368
660	50.357826 , 22.567533
661	50.357624 , 22.567900
662	50.357582 , 22.568314
663	50.357563 , 22.568906
664	50.357512 , 22.569261
665	50.357492 , 22.569412
666	50.357464 , 22.569537
667	50.357441 , 22.569662
668	50.357325 , 22.569971
669	50.357288 , 22.569993
670	50.357246 , 22.570136
671	50.357060 , 22.570554
672	50.357024 , 22.570685
673	50.356959 , 22.570842
674	50.356934 , 22.570977
675	50.356826 , 22.571189
676	50.356664 , 22.571424
677	50.356665 , 22.571493
678	50.356751 , 22.571636
679	50.356755 , 22.571827
680	50.356837 , 22.571870
681	50.357038 , 22.571808
682	50.357196 , 22.571622
683	50.357274 , 22.571629
684	50.357377 , 22.571693
685	50.357425 , 22.571767
686	50.357434 , 22.571870
687	50.357401 , 22.572011
688	50.357365 , 22.572153
689	50.357344 , 22.572480
690	50.357373 , 22.572648
691	50.357448 , 22.572780
692	50.357520 , 22.572953
693	50.357541 , 22.573243
694	50.357483 , 22.573351
695	50.357258 , 22.573374
696	50.357094 , 22.573311
697	50.357030 , 22.573314
698	50.356996 , 22.573364
699	50.356968 , 22.573461
700	50.356943 , 22.573623
701	50.356832 , 22.573918
702	50.356775 , 22.574003
703	50.356777 , 22.574062

Nr pkt.	Współrzędne punktów załamania granicy w układzie WGS84
704	50.356873 , 22.574252
705	50.356905 , 22.574507
706	50.356835 , 22.574803
707	50.356862 , 22.574919
708	50.356814 , 22.575141
709	50.356487 , 22.577145
710	50.356485 , 22.578461
711	50.356474 , 22.578625
712	50.356328 , 22.579054
713	50.355530 , 22.581868
714	50.355512 , 22.582107
715	50.355588 , 22.583041
716	50.355591 , 22.583201
717	50.355520 , 22.583405
718	50.355137 , 22.584493
719	50.354768 , 22.585415
720	50.354602 , 22.585772
721	50.354358 , 22.586039
722	50.353785 , 22.586472
723	50.353746 , 22.586585
724	50.353701 , 22.586989
725	50.353613 , 22.587452
726	50.353508 , 22.587735
727	50.352744 , 22.589592
728	50.352029 , 22.591328
729	50.351835 , 22.591590
730	50.350889 , 22.592800
731	50.350675 , 22.593064
732	50.349831 , 22.594180
733	50.349593 , 22.594476
734	50.349364 , 22.594715
735	50.348834 , 22.595241
736	50.348762 , 22.595415
737	50.348739 , 22.595524
738	50.348751 , 22.595871
739	50.348867 , 22.597175
740	50.348891 , 22.597354
741	50.348907 , 22.597426
742	50.349033 , 22.597776
743	50.349145 , 22.598044
744	50.349221 , 22.598278
745	50.349285 , 22.598584
746	50.349274 , 22.598935
747	50.349176 , 22.600174
748	50.349153 , 22.600172

Nr pkt.	Współrzędne punktów załamania granicy w układzie WGS84
749	50.349059 , 22.601453
750	50.349064 , 22.601909
751	50.349085 , 22.602123
752	50.349178 , 22.602422
753	50.349323 , 22.602601
754	50.349591 , 22.602870
755	50.350070 , 22.603338
756	50.350246 , 22.603638
757	50.350463 , 22.604204
758	50.350567 , 22.604887
759	50.350802 , 22.605919
760	50.351682 , 22.607556
761	50.351776 , 22.607881
762	50.351739 , 22.608147
763	50.351622 , 22.608526
764	50.351459 , 22.608976
765	50.351377 , 22.609161
766	50.351327 , 22.609302
767	50.351305 , 22.609550
768	50.351323 , 22.609985
769	50.351371 , 22.610236
770	50.351418 , 22.610380
771	50.351475 , 22.610662
772	50.351581 , 22.611066
773	50.351782 , 22.611455
774	50.351871 , 22.611686
775	50.352033 , 22.611962
776	50.352087 , 22.611992
777	50.352325 , 22.612234
778	50.352431 , 22.612367
779	50.352498 , 22.612416
780	50.352538 , 22.612502
781	50.352694 , 22.612691
782	50.352815 , 22.612946
783	50.352822 , 22.613102
784	50.352828 , 22.613173
785	50.352850 , 22.613927
786	50.352861 , 22.614036
787	50.352943 , 22.614224
788	50.353130 , 22.614503
789	50.353199 , 22.614676
790	50.353241 , 22.614839
791	50.353292 , 22.615137
792	50.353328 , 22.615363
793	50.353440 , 22.615605

Nr pkt.	Współrzędne punktów załamania granicy w układzie WGS84
794	50.353724 , 22.616149
795	50.353761 , 22.616268
796	50.353763 , 22.616601
797	50.353775 , 22.616738
798	50.353801 , 22.616878
799	50.353833 , 22.616975
800	50.353970 , 22.617162
801	50.354001 , 22.617262
802	50.354003 , 22.617330
803	50.353951 , 22.617539
804	50.353859 , 22.617742
805	50.353940 , 22.617923
806	50.353969 , 22.618245
807	50.353935 , 22.618400
808	50.353855 , 22.618606
809	50.353862 , 22.618743
810	50.353874 , 22.618825
811	50.353926 , 22.618833
812	50.354014 , 22.618915
813	50.354138 , 22.619004
814	50.354219 , 22.619014
815	50.354235 , 22.619048
816	50.354271 , 22.619261
817	50.354304 , 22.619354
818	50.354339 , 22.619429
819	50.354510 , 22.619442
820	50.354490 , 22.619569
821	50.354525 , 22.619789
822	50.354566 , 22.619855
823	50.354577 , 22.619960
824	50.354645 , 22.620007
825	50.354676 , 22.620069
826	50.354702 , 22.620173
827	50.354722 , 22.620380
828	50.354757 , 22.620432
829	50.354830 , 22.620464
830	50.354952 , 22.620477
831	50.355121 , 22.620817
832	50.355290 , 22.620600
833	50.355431 , 22.620817
834	50.355396 , 22.621006
835	50.355381 , 22.621173
836	50.355339 , 22.621302
837	50.355332 , 22.621442
838	50.355443 , 22.621644

Nr pkt.	Współrzędne punktów załamania granicy w układzie WGS84
839	50.355458 , 22.621720
840	50.355526 , 22.621783
841	50.355501 , 22.621882
842	50.355532 , 22.622057
843	50.355793 , 22.621855
844	50.355846 , 22.621993
845	50.355848 , 22.622107
846	50.355843 , 22.622367
847	50.355809 , 22.622496
848	50.355865 , 22.622574
849	50.355963 , 22.622779
850	50.356062 , 22.622820
851	50.356137 , 22.622727
852	50.356353 , 22.622700
853	50.356468 , 22.622963
854	50.356384 , 22.623063
855	50.356340 , 22.623186
856	50.356356 , 22.623248
857	50.356415 , 22.623249
858	50.356438 , 22.623157
859	50.356591 , 22.623090
860	50.356624 , 22.623294
861	50.356691 , 22.623359
862	50.356716 , 22.623456
863	50.356782 , 22.623525
864	50.356857 , 22.623575
865	50.356917 , 22.623699
866	50.357009 , 22.623792
867	50.357101 , 22.623785
868	50.357219 , 22.623866
869	50.357272 , 22.623936
870	50.357256 , 22.624084
871	50.357335 , 22.624157
872	50.357365 , 22.624231
873	50.357406 , 22.624236
874	50.357449 , 22.624246
875	50.357499 , 22.624573
876	50.357445 , 22.624597
877	50.357297 , 22.624575
878	50.357266 , 22.624529
879	50.357113 , 22.624497
880	50.357071 , 22.624583
881	50.357098 , 22.624663
882	50.357174 , 22.624723
883	50.357162 , 22.624786

Nr pkt.	Współrzędne punktów załamania granicy w układzie WGS84
884	50.357131 , 22.624825
885	50.357038 , 22.624935
886	50.356986 , 22.625013
887	50.357004 , 22.625090
888	50.357143 , 22.625115
889	50.357179 , 22.625276
890	50.357105 , 22.625324
891	50.357042 , 22.625331
892	50.356937 , 22.625453
893	50.356938 , 22.625531
894	50.357089 , 22.625538
895	50.357105 , 22.625682
896	50.357067 , 22.625797
897	50.357050 , 22.625937
898	50.356915 , 22.626048
899	50.356871 , 22.626066
900	50.356819 , 22.626168
901	50.356809 , 22.626256
902	50.356927 , 22.626412
903	50.357048 , 22.626418
904	50.357093 , 22.626559
905	50.357128 , 22.626650
906	50.357141 , 22.626751
907	50.357135 , 22.626853
908	50.357109 , 22.626966
909	50.357044 , 22.627013
910	50.357053 , 22.627167
911	50.357029 , 22.627310
912	50.357047 , 22.627383
913	50.357044 , 22.627517
914	50.357066 , 22.627681
915	50.356890 , 22.627748
916	50.356817 , 22.627806
917	50.356821 , 22.627861
918	50.356854 , 22.627923
919	50.356900 , 22.627942
920	50.357005 , 22.627945
921	50.357048 , 22.628088
922	50.357031 , 22.628211
923	50.356886 , 22.628366
924	50.356863 , 22.628406
925	50.356858 , 22.628468
926	50.356826 , 22.628514
927	50.356822 , 22.628573
928	50.356786 , 22.628612

Nr pkt.	Współrzędne punktów załamania granicy w układzie WGS84
929	50.356811 , 22.628738
930	50.356844 , 22.628866
931	50.356883 , 22.628886
932	50.357038 , 22.628943
933	50.357127 , 22.629055
934	50.357143 , 22.629287
935	50.357097 , 22.629383
936	50.357089 , 22.629484
937	50.357115 , 22.629711
938	50.357116 , 22.629787
939	50.357106 , 22.629874
940	50.357127 , 22.629916
941	50.357086 , 22.630053
942	50.357095 , 22.630202
943	50.357116 , 22.630300
944	50.357202 , 22.630328
945	50.357228 , 22.630467
946	50.357244 , 22.630510
947	50.357152 , 22.630519
948	50.357112 , 22.630700
949	50.357196 , 22.630842
950	50.357208 , 22.630872
951	50.357328 , 22.630985
952	50.357369 , 22.631054
953	50.357427 , 22.631064
954	50.357450 , 22.631202
955	50.357416 , 22.631272
956	50.357452 , 22.631375
957	50.357430 , 22.631665
958	50.357469 , 22.631738
959	50.357697 , 22.631746
960	50.357778 , 22.631671
961	50.357883 , 22.631825
962	50.357877 , 22.631898
963	50.357840 , 22.632040
964	50.357835 , 22.632142
965	50.357715 , 22.632160
966	50.357714 , 22.632316
967	50.357665 , 22.632341
968	50.357651 , 22.632495
969	50.357639 , 22.632552
970	50.357659 , 22.632715
971	50.357684 , 22.632851
972	50.357729 , 22.632947
973	50.357753 , 22.632979

Nr pkt.	Współrzędne punktów załamania granicy w układzie WGS84
974	50.357731 , 22.633083
975	50.357746 , 22.633172
976	50.357680 , 22.633181
977	50.357651 , 22.633273
978	50.357657 , 22.633369
979	50.357691 , 22.633388
980	50.357747 , 22.633387
981	50.357779 , 22.633515
982	50.357795 , 22.633621
983	50.357692 , 22.633656
984	50.357615 , 22.633601
985	50.357549 , 22.633575
986	50.357432 , 22.633608
987	50.357350 , 22.633611
988	50.357315 , 22.633654
989	50.357293 , 22.633757
990	50.357343 , 22.633751
991	50.357392 , 22.633799
992	50.357587 , 22.633794
993	50.357663 , 22.633858
994	50.357700 , 22.633898
995	50.357744 , 22.634011
996	50.357743 , 22.634046
997	50.357660 , 22.634205
998	50.357626 , 22.634211
999	50.357619 , 22.634343
1000	50.357608 , 22.634419
1001	50.357656 , 22.634499
1002	50.357520 , 22.634555
1003	50.357564 , 22.634748
1004	50.357510 , 22.635048
1005	50.357693 , 22.634860
1006	50.357789 , 22.634929
1007	50.357819 , 22.635031
1008	50.357940 , 22.635190
1009	50.357931 , 22.635319
1010	50.357980 , 22.635468
1011	50.357982 , 22.635589
1012	50.358011 , 22.635627
1013	50.358084 , 22.635629
1014	50.358321 , 22.635645
1015	50.358392 , 22.635598
1016	50.358441 , 22.635691
1017	50.358435 , 22.635739
1018	50.358359 , 22.635832

Nr pkt.	Współrzędne punktów załamania granicy w układzie WGS84
1019	50.358374 , 22.635895
1020	50.358412 , 22.635927
1021	50.358441 , 22.636019
1022	50.358471 , 22.636004
1023	50.358492 , 22.636027
1024	50.358493 , 22.636071
1025	50.358468 , 22.636164
1026	50.358471 , 22.636229
1027	50.358470 , 22.636320
1028	50.358514 , 22.636370
1029	50.358521 , 22.636458
1030	50.358545 , 22.636547
1031	50.358477 , 22.636771
1032	50.358479 , 22.636911
1033	50.358430 , 22.637040
1034	50.358422 , 22.637132
1035	50.358341 , 22.637222
1036	50.358360 , 22.637245
1037	50.358443 , 22.637191
1038	50.358520 , 22.637179
1039	50.358559 , 22.637308
1040	50.358556 , 22.637421
1041	50.358626 , 22.637555
1042	50.358635 , 22.637673
1043	50.358620 , 22.637799
1044	50.358489 , 22.637765
1045	50.358488 , 22.637827
1046	50.358463 , 22.637954
1047	50.358458 , 22.638058
1048	50.358438 , 22.638136
1049	50.358375 , 22.638212
1050	50.358343 , 22.638238
1051	50.358315 , 22.638441
1052	50.358248 , 22.638603
1053	50.358170 , 22.638710
1054	50.358153 , 22.638809
1055	50.358131 , 22.638866
1056	50.358096 , 22.638854
1057	50.358082 , 22.638980
1058	50.358201 , 22.639010
1059	50.358296 , 22.639062
1060	50.358386 , 22.639079
1061	50.358372 , 22.639190
1062	50.358298 , 22.639306
1063	50.358193 , 22.639345

Nr pkt.	Współrzędne punktów załamania granicy w układzie WGS84	
1064	50.358145	22.639388
1065	50.358185	22.639679
1066	50.358148	22.639736
1067	50.358036	22.639750
1068	50.357958	22.639839
1069	50.357849	22.639859
1070	50.357956	22.639979
1071	50.358012	22.640060
1072	50.358039	22.640118
1073	50.358037	22.640163
1074	50.358088	22.640267
1075	50.357976	22.640318
1076	50.358047	22.640428
1077	50.358081	22.640551
1078	50.358080	22.640689
1079	50.358102	22.640746
1080	50.358143	22.640766
1081	50.358227	22.640676
1082	50.358344	22.640643
1083	50.358419	22.640575
1084	50.358475	22.640626
1085	50.358501	22.640731
1086	50.358398	22.640803
1087	50.358348	22.640850
1088	50.358319	22.640956
1089	50.358357	22.641132
1090	50.358486	22.641201
1091	50.358547	22.641363
1092	50.358423	22.641552
1093	50.358302	22.641433
1094	50.358215	22.641327
1095	50.358141	22.641331
1096	50.358144	22.641452
1097	50.358107	22.641492
1098	50.358119	22.641554
1099	50.358071	22.641658
1100	50.358069	22.641715
1101	50.358118	22.641759
1102	50.358204	22.641808
1103	50.358145	22.641943
1104	50.358152	22.642019
1105	50.358124	22.642090
1106	50.357984	22.642018
1107	50.357980	22.642126
1108	50.357958	22.642162

Nr pkt.	Współrzędne punktów załamania granicy w układzie WGS84	
1109	50.357906	22.642136
1110	50.357899	22.642177
1111	50.357954	22.642247
1112	50.357986	22.642146
1113	50.358023	22.642160
1114	50.358065	22.642245
1115	50.358089	22.642350
1116	50.358066	22.642483
1117	50.358110	22.642595
1118	50.358139	22.642609
1119	50.358188	22.642495
1120	50.358224	22.642528
1121	50.358357	22.642515
1122	50.358453	22.642726
1123	50.358533	22.642732
1124	50.358656	22.642725
1125	50.358702	22.642749
1126	50.358724	22.642852
1127	50.358722	22.643013
1128	50.358687	22.643122
1129	50.358629	22.643120
1130	50.358536	22.643074
1131	50.358454	22.643102
1132	50.358489	22.643164
1133	50.358417	22.643214
1134	50.358366	22.643159
1135	50.358292	22.643346
1136	50.358284	22.643472
1137	50.358235	22.643524
1138	50.358248	22.643613
1139	50.358191	22.643709
1140	50.358132	22.643764
1141	50.358163	22.643809
1142	50.358304	22.643775
1143	50.358330	22.644001
1144	50.358220	22.644022
1145	50.358164	22.644024
1146	50.358210	22.644080
1147	50.358344	22.644053
1148	50.358374	22.644189
1149	50.358377	22.644278
1150	50.358297	22.644366
1151	50.358314	22.644485
1152	50.358351	22.644604
1153	50.358449	22.644693

Nr pkt.	Współrzędne punktów załamania granicy w układzie WGS84	
1154	50.358375	22.644800
1155	50.358323	22.644819
1156	50.358297	22.644873
1157	50.358345	22.645049
1158	50.358367	22.645106
1159	50.358346	22.645157
1160	50.358299	22.645175
1161	50.358276	22.645289
1162	50.358248	22.645347
1163	50.358388	22.645320
1164	50.358424	22.645470
1165	50.358433	22.645553
1166	50.358384	22.645600
1167	50.358396	22.645703
1168	50.358460	22.645801
1169	50.358476	22.645925
1170	50.358426	22.645993
1171	50.358335	22.646062
1172	50.358312	22.646057
1173	50.358271	22.645990
1174	50.358204	22.646106
1175	50.358171	22.646202
1176	50.358190	22.646373
1177	50.358200	22.646453
1178	50.358316	22.646508
1179	50.358464	22.646782
1180	50.358462	22.646932
1181	50.358434	22.647020
1182	50.358489	22.647216
1183	50.358478	22.647315
1184	50.358447	22.647363
1185	50.358278	22.647493
1186	50.358196	22.647504
1187	50.358122	22.647393
1188	50.358013	22.647286
1189	50.357900	22.647262
1190	50.357853	22.647284
1191	50.357835	22.647322
1192	50.357756	22.647407
1193	50.357707	22.647494
1194	50.357673	22.647600
1195	50.357696	22.647680
1196	50.357609	22.647767
1197	50.357570	22.647853
1198	50.357590	22.647909

Nr pkt.	Współrzędne punktów załamania granicy w układzie WGS84	
1199	50.357667	22.648006
1200	50.357813	22.648014
1201	50.357834	22.648173
1202	50.357821	22.648321
1203	50.357663	22.648325
1204	50.357626	22.648384
1205	50.357620	22.648475
1206	50.357657	22.648457
1207	50.357747	22.648458
1208	50.357764	22.648590
1209	50.357716	22.648752
1210	50.357723	22.648908
1211	50.357760	22.649046
1212	50.357724	22.649116
1213	50.357744	22.649215
1214	50.357775	22.649289
1215	50.357726	22.649336
1216	50.357750	22.649530
1217	50.357697	22.649565
1218	50.357685	22.649706
1219	50.357715	22.649764
1220	50.357707	22.649884
1221	50.357658	22.650003
1222	50.357606	22.649982
1223	50.357610	22.650046
1224	50.357673	22.650186
1225	50.357661	22.650290
1226	50.357471	22.650283
1227	50.357481	22.650345
1228	50.357464	22.650460
1229	50.357406	22.650497
1230	50.357397	22.650545
1231	50.357419	22.650600
1232	50.357460	22.650616
1233	50.357642	22.650513
1234	50.357672	22.650737
1235	50.357663	22.650874
1236	50.357549	22.650838
1237	50.357528	22.651120
1238	50.357489	22.651275
1239	50.357462	22.651473
1240	50.357110	22.651356
1241	50.357033	22.651417
1242	50.357138	22.651518
1243	50.357208	22.651513

Nr pkt.	Współrzędne punktów załamania granicy w układzie WGS84
1244	50.357207 , 22.651707
1245	50.357039 , 22.651721
1246	50.356999 , 22.651859
1247	50.356963 , 22.651914
1248	50.357032 , 22.651972
1249	50.357093 , 22.651994
1250	50.357115 , 22.652187
1251	50.357079 , 22.652337
1252	50.356953 , 22.652407
1253	50.356799 , 22.652699
1254	50.356756 , 22.652662
1255	50.356724 , 22.652516
1256	50.356640 , 22.652554
1257	50.356637 , 22.652675
1258	50.356684 , 22.652827
1259	50.356589 , 22.652912
1260	50.356532 , 22.652860
1261	50.356508 , 22.652926
1262	50.356535 , 22.653167
1263	50.356501 , 22.653297
1264	50.356598 , 22.653389
1265	50.356637 , 22.653533
1266	50.356565 , 22.653548
1267	50.356459 , 22.653647
1268	50.356405 , 22.653605
1269	50.356381 , 22.653558
1270	50.356357 , 22.653643
1271	50.356277 , 22.653696
1272	50.356257 , 22.653675
1273	50.356256 , 22.653774
1274	50.356199 , 22.653926
1275	50.356189 , 22.654006
1276	50.356120 , 22.654056
1277	50.356135 , 22.654124
1278	50.356192 , 22.654210
1279	50.356152 , 22.654363
1280	50.356169 , 22.654470
1281	50.356169 , 22.654637
1282	50.356110 , 22.654665
1283	50.356037 , 22.654618
1284	50.355976 , 22.654809
1285	50.355980 , 22.654912
1286	50.355910 , 22.654971
1287	50.355840 , 22.654894
1288	50.355718 , 22.654905

Nr pkt.	Współrzędne punktów załamania granicy w układzie WGS84
1289	50.355779 , 22.655009
1290	50.355977 , 22.655115
1291	50.355985 , 22.655263
1292	50.355993 , 22.655339
1293	50.355991 , 22.655453
1294	50.355843 , 22.655523
1295	50.355761 , 22.655447
1296	50.355754 , 22.655496
1297	50.355792 , 22.655650
1298	50.355807 , 22.655815
1299	50.355762 , 22.655851
1300	50.355688 , 22.655877
1301	50.355633 , 22.655734
1302	50.355606 , 22.655791
1303	50.355652 , 22.655830
1304	50.355637 , 22.655884
1305	50.355557 , 22.656035
1306	50.355480 , 22.655949
1307	50.355368 , 22.655604
1308	50.355355 , 22.655951
1309	50.355282 , 22.656116
1310	50.355444 , 22.656139
1311	50.355520 , 22.656295
1312	50.355546 , 22.656457
1313	50.355591 , 22.656506
1314	50.355634 , 22.656721
1315	50.355584 , 22.656847
1316	50.355505 , 22.656916
1317	50.355498 , 22.656961
1318	50.355534 , 22.657046
1319	50.355620 , 22.656998
1320	50.355700 , 22.657120
1321	50.355721 , 22.657298
1322	50.355663 , 22.657353
1323	50.355742 , 22.657486
1324	50.355692 , 22.657690
1325	50.355615 , 22.657647
1326	50.355602 , 22.657704
1327	50.355663 , 22.657880
1328	50.355717 , 22.658181
1329	50.355706 , 22.658240
1330	50.355623 , 22.658240
1331	50.355497 , 22.658551
1332	50.355375 , 22.658639
1333	50.355356 , 22.658985

Nr pkt.	Współrzędne punktów załamania granicy w układzie WGS84
1334	50.355264 , 22.658973
1335	50.355282 , 22.659074
1336	50.355375 , 22.659264
1337	50.355306 , 22.659380
1338	50.355234 , 22.659342
1339	50.355214 , 22.659484
1340	50.355122 , 22.659733
1341	50.355300 , 22.659848
1342	50.355387 , 22.660020
1343	50.355430 , 22.660238
1344	50.355430 , 22.660326
1345	50.355399 , 22.660377
1346	50.355412 , 22.660497
1347	50.355360 , 22.660672
1348	50.355358 , 22.660731
1349	50.355416 , 22.660823
1350	50.355430 , 22.660894
1351	50.355409 , 22.660996
1352	50.355354 , 22.661002
1353	50.355349 , 22.661059
1354	50.355413 , 22.661217
1355	50.355368 , 22.661324
1356	50.355363 , 22.661393
1357	50.355411 , 22.661473
1358	50.355379 , 22.661537
1359	50.355346 , 22.661576
1360	50.355360 , 22.661634
1361	50.355295 , 22.661644
1362	50.355262 , 22.661692
1363	50.355313 , 22.661723
1364	50.355396 , 22.661698
1365	50.355544 , 22.661693
1366	50.355552 , 22.661758
1367	50.355585 , 22.661879
1368	50.355577 , 22.662076
1369	50.355508 , 22.662134
1370	50.355508 , 22.662258
1371	50.355535 , 22.662301
1372	50.355583 , 22.662343
1373	50.355599 , 22.662410
1374	50.355655 , 22.662424
1375	50.355708 , 22.662440
1376	50.355730 , 22.662544
1377	50.355772 , 22.662609
1378	50.355761 , 22.662808

Nr pkt.	Współrzędne punktów załamania granicy w układzie WGS84
1379	50.355733 , 22.662865
1380	50.355696 , 22.662865
1381	50.355682 , 22.662974
1382	50.355513 , 22.663139
1383	50.355456 , 22.663176
1384	50.355375 , 22.663162
1385	50.355322 , 22.663060
1386	50.355305 , 22.663093
1387	50.355310 , 22.663205
1388	50.355280 , 22.663266
1389	50.355181 , 22.663244
1390	50.355189 , 22.663331
1391	50.355139 , 22.663379
1392	50.355124 , 22.663450
1393	50.355089 , 22.663533
1394	50.355074 , 22.663622
1395	50.355080 , 22.663697
1396	50.355060 , 22.663699
1397	50.355037 , 22.663752
1398	50.355005 , 22.663780
1399	50.354955 , 22.663761
1400	50.354929 , 22.663693
1401	50.354927 , 22.663652
1402	50.354856 , 22.663638
1403	50.354796 , 22.663606
1404	50.354718 , 22.663611
1405	50.354718 , 22.663806
1406	50.354668 , 22.663843
1407	50.354627 , 22.663937
1408	50.354782 , 22.663982
1409	50.354810 , 22.664029
1410	50.354813 , 22.664155
1411	50.354793 , 22.664206
1412	50.354812 , 22.664307
1413	50.354773 , 22.664357
1414	50.354790 , 22.664427
1415	50.354731 , 22.664506
1416	50.354685 , 22.664471
1417	50.354668 , 22.664528
1418	50.354710 , 22.664560
1419	50.354691 , 22.664588
1420	50.354691 , 22.664646
1421	50.354607 , 22.664718
1422	50.354609 , 22.664822
1423	50.354669 , 22.664757

Nr pkt.	Współrzędne punktów załamania granicy w układzie WGS84
1424	50.354747 , 22.664783
1425	50.354712 , 22.664924
1426	50.354663 , 22.664958
1427	50.354640 , 22.665067
1428	50.354647 , 22.665162
1429	50.354554 , 22.665313
1430	50.354472 , 22.665303
1431	50.354453 , 22.665366
1432	50.354532 , 22.665449
1433	50.354532 , 22.665506
1434	50.354510 , 22.665583
1435	50.354544 , 22.665740
1436	50.354581 , 22.665818
1437	50.354576 , 22.665893
1438	50.354532 , 22.665920
1439	50.354466 , 22.665969
1440	50.354409 , 22.666094
1441	50.354347 , 22.666057
1442	50.354243 , 22.666089
1443	50.354200 , 22.666197
1444	50.354171 , 22.666265
1445	50.354377 , 22.666198
1446	50.354349 , 22.666458
1447	50.354305 , 22.666473
1448	50.354220 , 22.666538
1449	50.354182 , 22.666515
1450	50.354150 , 22.666555
1451	50.354116 , 22.666500
1452	50.354066 , 22.666486
1453	50.354045 , 22.666507
1454	50.354005 , 22.666500
1455	50.353975 , 22.666537
1456	50.353939 , 22.666529
1457	50.353907 , 22.666564
1458	50.353858 , 22.666561
1459	50.353823 , 22.666644
1460	50.353738 , 22.666734
1461	50.353759 , 22.666802
1462	50.353813 , 22.666898
1463	50.353832 , 22.666964
1464	50.353818 , 22.667004
1465	50.353867 , 22.667057
1466	50.353924 , 22.667150
1467	50.353930 , 22.667255
1468	50.353889 , 22.667425

Nr pkt.	Współrzędne punktów załamania granicy w układzie WGS84
1469	50.353858 , 22.667465
1470	50.353882 , 22.667533
1471	50.353881 , 22.667640
1472	50.353908 , 22.667630
1473	50.353959 , 22.667640
1474	50.353992 , 22.667586
1475	50.353994 , 22.667739
1476	50.354098 , 22.667562
1477	50.354144 , 22.667522
1478	50.354208 , 22.667603
1479	50.354327 , 22.667610
1480	50.354326 , 22.667743
1481	50.354388 , 22.667762
1482	50.354458 , 22.667816
1483	50.354442 , 22.667954
1484	50.354441 , 22.668034
1485	50.354380 , 22.668131
1486	50.354325 , 22.668078
1487	50.354310 , 22.668191
1488	50.354286 , 22.668244
1489	50.354297 , 22.668323
1490	50.354278 , 22.668363
1491	50.354275 , 22.668417
1492	50.354308 , 22.668487
1493	50.354322 , 22.668570
1494	50.354265 , 22.668659
1495	50.354236 , 22.668668
1496	50.354262 , 22.668749
1497	50.354287 , 22.668875
1498	50.354263 , 22.668957
1499	50.354286 , 22.669067
1500	50.354175 , 22.669097
1501	50.354185 , 22.669249
1502	50.354153 , 22.669245
1503	50.354142 , 22.669300
1504	50.354082 , 22.669397
1505	50.354053 , 22.669408
1506	50.354038 , 22.669479
1507	50.354069 , 22.669510
1508	50.354138 , 22.669415
1509	50.354236 , 22.669473
1510	50.354336 , 22.669587
1511	50.354307 , 22.669761
1512	50.354391 , 22.670087
1513	50.354366 , 22.670290

Nr pkt.	Współrzędne punktów załamania granicy w układzie WGS84
1514	50.354291 , 22.670368
1515	50.354366 , 22.670545
1516	50.354401 , 22.670512
1517	50.354429 , 22.670418
1518	50.354502 , 22.670338
1519	50.354564 , 22.670381
1520	50.354585 , 22.670410
1521	50.354637 , 22.670352
1522	50.354710 , 22.670437
1523	50.354751 , 22.670532
1524	50.354771 , 22.670582
1525	50.354811 , 22.670526
1526	50.354841 , 22.670620
1527	50.354793 , 22.670644
1528	50.354830 , 22.670746
1529	50.354895 , 22.670777
1530	50.354951 , 22.670903
1531	50.354906 , 22.671091
1532	50.354819 , 22.671068
1533	50.354723 , 22.671072
1534	50.354727 , 22.671142
1535	50.354773 , 22.671255
1536	50.354794 , 22.671353
1537	50.354853 , 22.671435
1538	50.354811 , 22.671577
1539	50.354882 , 22.671628
1540	50.354936 , 22.671637
1541	50.354967 , 22.671626
1542	50.354964 , 22.671542
1543	50.354917 , 22.671430
1544	50.354964 , 22.671295
1545	50.355048 , 22.671312
1546	50.355097 , 22.671430
1547	50.355084 , 22.671495
1548	50.355104 , 22.671613
1549	50.355054 , 22.671696
1550	50.355170 , 22.671707
1551	50.355207 , 22.671736
1552	50.355078 , 22.671962
1553	50.354996 , 22.671929
1554	50.354866 , 22.671940
1555	50.354754 , 22.672081
1556	50.354704 , 22.672103
1557	50.354664 , 22.672167
1558	50.354679 , 22.672328

Nr pkt.	Współrzędne punktów załamania granicy w układzie WGS84
1559	50.354762 , 22.672410
1560	50.354796 , 22.672639
1561	50.354859 , 22.672780
1562	50.354878 , 22.672801
1563	50.354977 , 22.672746
1564	50.355039 , 22.672621
1565	50.355194 , 22.672585
1566	50.355364 , 22.672425
1567	50.355359 , 22.672537
1568	50.355341 , 22.672616
1569	50.355373 , 22.672727
1570	50.355354 , 22.672826
1571	50.355379 , 22.673021
1572	50.355413 , 22.673168
1573	50.355386 , 22.673279
1574	50.355394 , 22.673368
1575	50.355466 , 22.673488
1576	50.355535 , 22.673542
1577	50.355532 , 22.673602
1578	50.355404 , 22.673719
1579	50.355391 , 22.673785
1580	50.355413 , 22.673848
1581	50.355388 , 22.673899
1582	50.355575 , 22.673961
1583	50.355560 , 22.674230
1584	50.355580 , 22.674618
1585	50.355649 , 22.674838
1586	50.355544 , 22.675212
1587	50.355532 , 22.675670
1588	50.355444 , 22.675853
1589	50.355474 , 22.676582
1590	50.355576 , 22.676908
1591	50.355378 , 22.676939
1592	50.355444 , 22.676961
1593	50.355443 , 22.677017
1594	50.355457 , 22.677058
1595	50.355419 , 22.677294
1596	50.355423 , 22.677503
1597	50.355365 , 22.677717
1598	50.355411 , 22.677847
1599	50.355560 , 22.677928
1600	50.355620 , 22.677882
1601	50.355674 , 22.677906
1602	50.355746 , 22.677840
1603	50.355842 , 22.677805

Nr pkt.	Współrzędne punktów załamania granicy w układzie WGS84
1604	50.355816 , 22.678109
1605	50.355828 , 22.678267
1606	50.355796 , 22.678373
1607	50.355733 , 22.678380
1608	50.355633 , 22.678594
1609	50.355590 , 22.678760
1610	50.355580 , 22.679000
1611	50.355718 , 22.679280
1612	50.355830 , 22.679258
1613	50.355786 , 22.679118
1614	50.355756 , 22.678941
1615	50.355860 , 22.678917
1616	50.355951 , 22.679086
1617	50.356074 , 22.679353
1618	50.356129 , 22.679661
1619	50.356130 , 22.679905
1620	50.356196 , 22.680122
1621	50.356098 , 22.680525
1622	50.356090 , 22.680659
1623	50.356234 , 22.681388
1624	50.356340 , 22.681745
1625	50.356365 , 22.681844
1626	50.356456 , 22.681949
1627	50.356526 , 22.682113
1628	50.356440 , 22.682317
1629	50.356379 , 22.682423
1630	50.356369 , 22.682549
1631	50.356331 , 22.682600
1632	50.356353 , 22.682744
1633	50.356374 , 22.682819
1634	50.356355 , 22.682931
1635	50.356380 , 22.683093
1636	50.356418 , 22.683112
1637	50.356412 , 22.683212
1638	50.356290 , 22.683288
1639	50.356283 , 22.683336
1640	50.356292 , 22.683402
1641	50.356342 , 22.683463
1642	50.356391 , 22.683563
1643	50.356449 , 22.683664
1644	50.356456 , 22.683786
1645	50.356479 , 22.683818
1646	50.356399 , 22.683861
1647	50.356462 , 22.684050
1648	50.356513 , 22.684154

Nr pkt.	Współrzędne punktów załamania granicy w układzie WGS84
1649	50.356503 , 22.684212
1650	50.356513 , 22.684373
1651	50.356537 , 22.684469
1652	50.356606 , 22.684696
1653	50.356651 , 22.685003
1654	50.356708 , 22.685072
1655	50.356759 , 22.685161
1656	50.356778 , 22.685298
1657	50.356718 , 22.685458
1658	50.356725 , 22.685638
1659	50.356778 , 22.685738
1660	50.356749 , 22.686184
1661	50.356809 , 22.686264
1662	50.356888 , 22.686301
1663	50.356870 , 22.686384
1664	50.356792 , 22.686468
1665	50.356726 , 22.686596
1666	50.357028 , 22.687133
1667	50.356917 , 22.687962
1668	50.356541 , 22.687684
1669	50.356205 , 22.687742
1670	50.355985 , 22.687760
1671	50.355740 , 22.687927
1672	50.354860 , 22.687727
1673	50.354654 , 22.687894
1674	50.354410 , 22.687861
1675	50.353915 , 22.687856
1676	50.353590 , 22.687816
1677	50.353250 , 22.687752
1678	50.352462 , 22.687594
1679	50.352266 , 22.687413
1680	50.352137 , 22.687330
1681	50.351706 , 22.687240
1682	50.351495 , 22.687133
1683	50.350629 , 22.686711
1684	50.350227 , 22.686491
1685	50.349359 , 22.686110
1686	50.347973 , 22.686270
1687	50.347668 , 22.686417
1688	50.347373 , 22.686494
1689	50.347142 , 22.686606
1690	50.346913 , 22.686746
1691	50.346479 , 22.686959
1692	50.346424 , 22.686963
1693	50.345992 , 22.687103

Nr pkt.	Współrzędne punktów załamania granicy w układzie WGS84
1694	50.345728 , 22.687165
1695	50.345344 , 22.687053
1696	50.345068 , 22.686932
1697	50.345075 , 22.686823
1698	50.345056 , 22.686519
1699	50.345080 , 22.685576
1700	50.345221 , 22.684174
1701	50.345245 , 22.683760
1702	50.345205 , 22.683181
1703	50.345074 , 22.682465
1704	50.344852 , 22.681605
1705	50.344766 , 22.680905
1706	50.344819 , 22.679910
1707	50.344821 , 22.679197
1708	50.344876 , 22.678228
1709	50.344860 , 22.677994
1710	50.344706 , 22.677097
1711	50.344513 , 22.676281
1712	50.344331 , 22.674703
1713	50.344129 , 22.673949
1714	50.343801 , 22.673173
1715	50.343178 , 22.672477
1716	50.342908 , 22.672266
1717	50.342767 , 22.672114
1718	50.342400 , 22.671610
1719	50.342160 , 22.671364
1720	50.341685 , 22.671011
1721	50.341403 , 22.670885
1722	50.340713 , 22.670752
1723	50.340346 , 22.670444
1724	50.340181 , 22.670236
1725	50.339990 , 22.669917
1726	50.339755 , 22.669211
1727	50.339484 , 22.668682
1728	50.339384 , 22.668338
1729	50.339312 , 22.667991
1730	50.338949 , 22.665282
1731	50.338442 , 22.663301
1732	50.338118 , 22.661941
1733	50.337842 , 22.660593
1734	50.337654 , 22.659221
1735	50.337193 , 22.657123
1736	50.336793 , 22.655070
1737	50.336700 , 22.654578
1738	50.336419 , 22.652593

Nr pkt.	Współrzędne punktów załamania granicy w układzie WGS84
1739	50.336420 , 22.651289
1740	50.336604 , 22.648904
1741	50.336607 , 22.648736
1742	50.336779 , 22.646100
1743	50.336583 , 22.643343
1744	50.336399 , 22.640867
1745	50.336134 , 22.639335
1746	50.335635 , 22.637111
1747	50.334830 , 22.633547
1748	50.334621 , 22.631332
1749	50.334504 , 22.629075
1750	50.334448 , 22.628661
1751	50.334042 , 22.625886
1752	50.333869 , 22.624752
1753	50.333433 , 22.621903
1754	50.333035 , 22.619703
1755	50.332030 , 22.616971
1756	50.331960 , 22.616720
1757	50.331620 , 22.615470
1758	50.330576 , 22.612548
1759	50.329994 , 22.610341
1760	50.329848 , 22.610254
1761	50.329741 , 22.610182
1762	50.329265 , 22.609869
1763	50.328755 , 22.609442
1764	50.327701 , 22.608285
1765	50.327308 , 22.607931
1766	50.326419 , 22.607132
1767	50.325450 , 22.606573
1768	50.324227 , 22.606571
1769	50.323513 , 22.606699
1770	50.323318 , 22.606730
1771	50.322461 , 22.606736
1772	50.321327 , 22.606900
1773	50.320837 , 22.606988
1774	50.319467 , 22.606797
1775	50.319161 , 22.606755
1776	50.317902 , 22.606660
1777	50.317854 , 22.606657
1778	50.317304 , 22.606613
1779	50.316617 , 22.606607
1780	50.315634 , 22.606689
1781	50.314843 , 22.606788
1782	50.314285 , 22.606658
1783	50.313555 , 22.606775

Nr pkt.	Współrzędne punktów załamania granicy w układzie WGS84
1784	50.313232 , 22.606768
1785	50.312403 , 22.606793
1786	50.311190 , 22.606874
1787	50.311083 , 22.606901
1788	50.311032 , 22.606929
1789	50.310949 , 22.607073
1790	50.310894 , 22.607152
1791	50.310855 , 22.607233
1792	50.310900 , 22.607258
1793	50.311103 , 22.607414
1794	50.311238 , 22.607601
1795	50.311346 , 22.607944
1796	50.311368 , 22.608055
1797	50.311331 , 22.608135
1798	50.311209 , 22.608209
1799	50.311158 , 22.608162
1800	50.311101 , 22.607995
1801	50.310958 , 22.607764
1802	50.310918 , 22.607769
1803	50.310881 , 22.607718
1804	50.310871 , 22.607646
1805	50.310886 , 22.607583
1806	50.310868 , 22.607534
1807	50.310810 , 22.607629
1808	50.310779 , 22.607656
1809	50.310832 , 22.607685
1810	50.310841 , 22.607740
1811	50.310831 , 22.607786
1812	50.310790 , 22.607859
1813	50.310740 , 22.607893
1814	50.310720 , 22.607942
1815	50.310779 , 22.607986
1816	50.310807 , 22.607988
1817	50.310845 , 22.607928
1818	50.310888 , 22.607921
1819	50.310940 , 22.607833
1820	50.310954 , 22.608084
1821	50.310950 , 22.608220
1822	50.310978 , 22.608378
1823	50.310977 , 22.608505
1824	50.310956 , 22.608650
1825	50.310926 , 22.608704
1826	50.310868 , 22.608724
1827	50.310801 , 22.608709
1828	50.310761 , 22.608667

Nr pkt.	Współrzędne punktów załamania granicy w układzie WGS84
1829	50.310743 , 22.608585
1830	50.310718 , 22.608434
1831	50.310654 , 22.608297
1832	50.310607 , 22.608254
1833	50.310539 , 22.608347
1834	50.310493 , 22.608393
1835	50.310461 , 22.608442
1836	50.310495 , 22.608507
1837	50.310503 , 22.608639
1838	50.310516 , 22.608721
1839	50.310559 , 22.608842
1840	50.310620 , 22.608944
1841	50.310634 , 22.609017
1842	50.310617 , 22.609103
1843	50.310647 , 22.609165
1844	50.310699 , 22.609234
1845	50.310818 , 22.609369
1846	50.310828 , 22.609444
1847	50.310795 , 22.609563
1848	50.310763 , 22.609629
1849	50.310710 , 22.609652
1850	50.310591 , 22.609703
1851	50.310520 , 22.609714
1852	50.310486 , 22.609714
1853	50.310426 , 22.609680
1854	50.310384 , 22.609682
1855	50.310319 , 22.609647
1856	50.310297 , 22.609569
1857	50.310325 , 22.609451
1858	50.310325 , 22.609400
1859	50.310319 , 22.609364
1860	50.310292 , 22.609324
1861	50.310244 , 22.609298
1862	50.310211 , 22.609309
1863	50.310188 , 22.609376
1864	50.310205 , 22.609432
1865	50.310236 , 22.609439
1866	50.310257 , 22.609495
1867	50.310237 , 22.609578
1868	50.310174 , 22.609710
1869	50.310239 , 22.609763
1870	50.310296 , 22.609784
1871	50.310376 , 22.609941
1872	50.310395 , 22.609917
1873	50.310364 , 22.610076

Nr pkt.	Współrzędne punktów załamania granicy w układzie WGS84
1874	50.310179 , 22.610160
1875	50.310079 , 22.610424
1876	50.310070 , 22.610819
1877	50.310134 , 22.610939
1878	50.310154 , 22.611148
1879	50.310237 , 22.611372
1880	50.310163 , 22.611593
1881	50.310148 , 22.611733
1882	50.309922 , 22.611918
1883	50.309895 , 22.612500
1884	50.309873 , 22.612704
1885	50.309872 , 22.612704
1886	50.309644 , 22.613044
1887	50.309499 , 22.613064
1888	50.309431 , 22.613218
1889	50.309300 , 22.613385
1890	50.309172 , 22.613475
1891	50.309081 , 22.613562
1892	50.309004 , 22.613681
1893	50.308958 , 22.613762
1894	50.308897 , 22.614003
1895	50.308801 , 22.614721
1896	50.308920 , 22.614792
1897	50.308959 , 22.614850
1898	50.309049 , 22.614882
1899	50.309064 , 22.614979
1900	50.309116 , 22.615096
1901	50.309229 , 22.615180
1902	50.309377 , 22.615399
1903	50.309456 , 22.615678
1904	50.309453 , 22.615759
1905	50.309379 , 22.615852
1906	50.309309 , 22.615884
1907	50.309186 , 22.615875
1908	50.309163 , 22.616102
1909	50.309119 , 22.616235
1910	50.309074 , 22.616315
1911	50.309033 , 22.616359
1912	50.308982 , 22.616374
1913	50.308935 , 22.616355
1914	50.308875 , 22.616265
1915	50.308809 , 22.615927
1916	50.308725 , 22.615724
1917	50.308668 , 22.615649
1918	50.308498 , 22.615611

Nr pkt.	Współrzędne punktów załamania granicy w układzie WGS84
1919	50.308403 , 22.615663
1920	50.307888 , 22.615899
1921	50.307745 , 22.615991
1922	50.307644 , 22.616105
1923	50.307579 , 22.616153
1924	50.307483 , 22.616292
1925	50.307412 , 22.616428
1926	50.307375 , 22.616606
1927	50.307359 , 22.616777
1928	50.307368 , 22.616949
1929	50.307391 , 22.617051
1930	50.307418 , 22.617209
1931	50.307483 , 22.617440
1932	50.307777 , 22.617274
1933	50.307840 , 22.617206
1934	50.307922 , 22.617125
1935	50.307965 , 22.617084
1936	50.308014 , 22.617072
1937	50.308067 , 22.617097
1938	50.308095 , 22.617198
1939	50.308164 , 22.617634
1940	50.308208 , 22.618047
1941	50.308190 , 22.618458
1942	50.308286 , 22.618560
1943	50.308371 , 22.618514
1944	50.308451 , 22.618497
1945	50.308537 , 22.618538
1946	50.308576 , 22.618601
1947	50.308590 , 22.618695
1948	50.308453 , 22.618715
1949	50.308400 , 22.618750
1950	50.308329 , 22.618760
1951	50.308279 , 22.618740
1952	50.308241 , 22.618766
1953	50.308281 , 22.618853
1954	50.308416 , 22.618955
1955	50.308440 , 22.618939
1956	50.308498 , 22.618996
1957	50.308532 , 22.619164
1958	50.308474 , 22.619259
1959	50.308402 , 22.619269
1960	50.308083 , 22.619120
1961	50.308062 , 22.619362
1962	50.308045 , 22.619441
1963	50.307917 , 22.619676

Nr pkt.	Współrzędne punktów załamania granicy w układzie WGS84
1964	50.307911 , 22.619781
1965	50.307996 , 22.620398
1966	50.308045 , 22.620544
1967	50.308132 , 22.620683
1968	50.308169 , 22.620828
1969	50.308143 , 22.620902
1970	50.308072 , 22.621051
1971	50.307963 , 22.621085
1972	50.307900 , 22.621070
1973	50.307842 , 22.621023
1974	50.307775 , 22.620994
1975	50.307695 , 22.621017
1976	50.307641 , 22.621069
1977	50.307617 , 22.621148
1978	50.307607 , 22.621269
1979	50.307635 , 22.621382
1980	50.307678 , 22.621501
1981	50.307701 , 22.621693
1982	50.307696 , 22.621844
1983	50.307741 , 22.622106
1984	50.307742 , 22.622157
1985	50.307733 , 22.622433
1986	50.307735 , 22.622532
1987	50.307755 , 22.622643
1988	50.307802 , 22.622811
1989	50.307889 , 22.623501
1990	50.307892 , 22.623626
1991	50.307850 , 22.623723
1992	50.307786 , 22.623796
1993	50.307731 , 22.623825
1994	50.307650 , 22.623831
1995	50.307577 , 22.623858
1996	50.307492 , 22.623929
1997	50.307346 , 22.624065
1998	50.307287 , 22.624145
1999	50.307257 , 22.624226
2000	50.307243 , 22.624335
2001	50.307240 , 22.624471
2002	50.307278 , 22.624772
2003	50.307232 , 22.625010
2004	50.307125 , 22.625104
2005	50.307025 , 22.625141
2006	50.306976 , 22.625244
2007	50.306775 , 22.625498
2008	50.306684 , 22.625629

Nr pkt.	Współrzędne punktów załamania granicy w układzie WGS84
2009	50.306625 , 22.625622
2010	50.306499 , 22.625642
2011	50.306227 , 22.625860
2012	50.306128 , 22.626031
2013	50.306100 , 22.626111
2014	50.306111 , 22.626317
2015	50.306089 , 22.626585
2016	50.306056 , 22.626799
2017	50.305990 , 22.626955
2018	50.305904 , 22.627074
2019	50.305846 , 22.627226
2020	50.305788 , 22.627403
2021	50.305763 , 22.627662
2022	50.305707 , 22.627926
2023	50.305641 , 22.628081
2024	50.305541 , 22.628185
2025	50.305472 , 22.628319
2026	50.305412 , 22.628556
2027	50.305391 , 22.628829
2028	50.305417 , 22.628950
2029	50.305648 , 22.629297
2030	50.305709 , 22.629385
2031	50.305743 , 22.629474
2032	50.305714 , 22.629584
2033	50.305535 , 22.629925
2034	50.305492 , 22.630019
2035	50.305484 , 22.630091
2036	50.305548 , 22.630250
2037	50.305609 , 22.630351
2038	50.305686 , 22.630457
2039	50.305788 , 22.630582
2040	50.305807 , 22.630642
2041	50.305813 , 22.630788
2042	50.305786 , 22.630949
2043	50.305710 , 22.631208
2044	50.305657 , 22.631263
2045	50.305575 , 22.631285
2046	50.305580 , 22.631433
2047	50.305556 , 22.631605
2048	50.305550 , 22.631779
2049	50.305549 , 22.631869
2050	50.305506 , 22.632107
2051	50.305509 , 22.632198
2052	50.305503 , 22.632266
2053	50.305474 , 22.632300

Nr pkt.	Współrzędne punktów załamania granicy w układzie WGS84
2054	50.305268 , 22.632420
2055	50.305254 , 22.632448
2056	50.305255 , 22.632557
2057	50.305276 , 22.632734
2058	50.305292 , 22.632816
2059	50.305295 , 22.632880
2060	50.305279 , 22.632956
2061	50.305227 , 22.633045
2062	50.305123 , 22.633169
2063	50.305060 , 22.633287
2064	50.305044 , 22.633352
2065	50.305053 , 22.633505
2066	50.305030 , 22.633568
2067	50.304936 , 22.633693
2068	50.304894 , 22.633806
2069	50.304840 , 22.634055
2070	50.304778 , 22.634120
2071	50.304678 , 22.634161
2072	50.304566 , 22.634185
2073	50.304457 , 22.634214
2074	50.304361 , 22.634292
2075	50.304321 , 22.634426
2076	50.304214 , 22.634844
2077	50.304188 , 22.635061
2078	50.304190 , 22.635193
2079	50.304178 , 22.635267
2080	50.304147 , 22.635330
2081	50.304023 , 22.635510
2082	50.303915 , 22.635737
2083	50.303866 , 22.635800
2084	50.303730 , 22.635901
2085	50.303635 , 22.635973
2086	50.303592 , 22.636058
2087	50.303577 , 22.636147
2088	50.303587 , 22.636198
2089	50.303616 , 22.636243
2090	50.303708 , 22.636311
2091	50.303732 , 22.636331
2092	50.303832 , 22.636589
2093	50.303827 , 22.636988
2094	50.303795 , 22.637286
2095	50.303762 , 22.637427
2096	50.303771 , 22.637518
2097	50.303762 , 22.637664
2098	50.303700 , 22.637873

Nr pkt.	Współrzędne punktów załamania granicy w układzie WGS84
2099	50.303685 , 22.637933
2100	50.303676 , 22.638161
2101	50.303666 , 22.638232
2102	50.303629 , 22.638300
2103	50.303613 , 22.638362
2104	50.303617 , 22.638411
2105	50.303016 , 22.638157
2106	50.303039 , 22.638272
2107	50.302490 , 22.637796
2108	50.301651 , 22.637924
2109	50.300958 , 22.638211
2110	50.300571 , 22.639266
2111	50.300056 , 22.639985
2112	50.299673 , 22.640103
2113	50.298824 , 22.641517
2114	50.298277 , 22.642318
2115	50.297880 , 22.642514
2116	50.297651 , 22.642795
2117	50.297107 , 22.642892
2118	50.296907 , 22.643073
2119	50.296649 , 22.643149
2120	50.296458 , 22.643123
2121	50.296285 , 22.643200
2122	50.296035 , 22.643224
2123	50.295805 , 22.643138
2124	50.295588 , 22.643009
2125	50.295372 , 22.642936
2126	50.295239 , 22.642807
2127	50.295137 , 22.642755
2128	50.294918 , 22.642585
2129	50.294403 , 22.642301
2130	50.294596 , 22.641364
2131	50.294722 , 22.640840
2132	50.295133 , 22.639264
2133	50.295504 , 22.637698
2134	50.295345 , 22.637556
2135	50.295141 , 22.637340
2136	50.294491 , 22.636649
2137	50.293494 , 22.635592
2138	50.293533 , 22.635496
2139	50.293539 , 22.635312
2140	50.293575 , 22.634744
2141	50.293750 , 22.633773
2142	50.293816 , 22.633536
2143	50.293858 , 22.632822

Nr pkt.	Współrzędne punktów załamania granicy w układzie WGS84
2144	50.293389 , 22.630965
2145	50.292566 , 22.630691
2146	50.291342 , 22.630221
2147	50.289989 , 22.629810
2148	50.288976 , 22.629453
2149	50.287821 , 22.629038
2150	50.287348 , 22.628870
2151	50.287207 , 22.628804
2152	50.286615 , 22.628603
2153	50.285960 , 22.628379
2154	50.285375 , 22.628180
2155	50.284240 , 22.627796
2156	50.283865 , 22.627671
2157	50.282997 , 22.627440
2158	50.283091 , 22.628989
2159	50.283164 , 22.629961
2160	50.283245 , 22.631118
2161	50.283376 , 22.633080
2162	50.283401 , 22.633532
2163	50.283476 , 22.634830
2164	50.282752 , 22.634564
2165	50.281513 , 22.634104
2166	50.280742 , 22.633846
2167	50.280175 , 22.633649
2168	50.279735 , 22.633509
2169	50.278743 , 22.633190
2170	50.277935 , 22.632322
2171	50.276751 , 22.631035
2172	50.275772 , 22.629980
2173	50.275093 , 22.629366
2174	50.274628 , 22.628820
2175	50.273626 , 22.627541
2176	50.272519 , 22.626377
2177	50.269211 , 22.622533
2178	50.268491 , 22.621654
2179	50.267968 , 22.621054
2180	50.266754 , 22.619676
2181	50.266792 , 22.619400
2182	50.267204 , 22.618120
2183	50.267319 , 22.617749
2184	50.267399 , 22.617479
2185	50.267447 , 22.617326
2186	50.267510 , 22.617189
2187	50.267616 , 22.616863
2188	50.267818 , 22.616232

Nr pkt.	Współrzędne punktów załamania granicy w układzie WGS84
2189	50.267911 , 22.615933
2190	50.268093 , 22.615426
2191	50.268203 , 22.615100
2192	50.268336 , 22.614713
2193	50.268737 , 22.613495
2194	50.268972 , 22.612770
2195	50.269253 , 22.611964
2196	50.269443 , 22.611436
2197	50.269619 , 22.610921
2198	50.269809 , 22.610235
2199	50.269846 , 22.610122
2200	50.270129 , 22.609281
2201	50.270292 , 22.608800
2202	50.270435 , 22.608372
2203	50.270701 , 22.607542
2204	50.270950 , 22.606786
2205	50.271366 , 22.605555
2206	50.271681 , 22.604609
2207	50.271874 , 22.604029
2208	50.271942 , 22.603780
2209	50.272211 , 22.603022
2210	50.272451 , 22.602328
2211	50.272858 , 22.601036
2212	50.273385 , 22.599455
2213	50.273619 , 22.598768
2214	50.273932 , 22.597861
2215	50.274283 , 22.596788
2216	50.274607 , 22.595802
2217	50.274852 , 22.595067
2218	50.275131 , 22.594193
2219	50.275386 , 22.593484
2220	50.275650 , 22.592707
2221	50.275716 , 22.592619
2222	50.274922 , 22.591496
2223	50.274682 , 22.591272
2224	50.273954 , 22.590597
2225	50.272644 , 22.588449
2226	50.271493 , 22.587337
2227	50.271018 , 22.586874
2228	50.270629 , 22.586560
2229	50.270374 , 22.586492
2230	50.269803 , 22.585818
2231	50.267136 , 22.582621
2232	50.267055 , 22.582604
2233	50.267002 , 22.582562

Nr pkt.	Współrzędne punktów załamania granicy w układzie WGS84
2234	50.266226 , 22.582131
2235	50.265062 , 22.581471
2236	50.264367 , 22.581042
2237	50.263940 , 22.580812
2238	50.262813 , 22.580148
2239	50.261814 , 22.579556
2240	50.260747 , 22.578931
2241	50.259600 , 22.578262
2242	50.258480 , 22.577608
2243	50.257371 , 22.576967
2244	50.256821 , 22.576647
2245	50.256803 , 22.576579
2246	50.256195 , 22.576229
2247	50.255196 , 22.575651
2248	50.255051 , 22.575582
2249	50.254012 , 22.575086
2250	50.252887 , 22.574534
2251	50.252011 , 22.574069
2252	50.251165 , 22.573618
2253	50.250945 , 22.574077
2254	50.250476 , 22.575092
2255	50.250288 , 22.575467
2256	50.250168 , 22.575557
2257	50.249802 , 22.575630
2258	50.249503 , 22.575850
2259	50.249408 , 22.575753
2260	50.249355 , 22.575597
2261	50.249242 , 22.575854
2262	50.249085 , 22.576070
2263	50.249024 , 22.576235
2264	50.249005 , 22.576536
2265	50.248813 , 22.576828
2266	50.248614 , 22.576966
2267	50.248584 , 22.577196
2268	50.248651 , 22.577362
2269	50.248620 , 22.577567
2270	50.248444 , 22.577798
2271	50.248348 , 22.578095
2272	50.248319 , 22.578240
2273	50.248240 , 22.578866
2274	50.247672 , 22.579177
2275	50.247161 , 22.579489
2276	50.246835 , 22.579940
2277	50.246431 , 22.580530
2278	50.246242 , 22.580776

Nr pkt.	Współrzędne punktów załamania granicy w układzie WGS84
2279	50.246011 , 22.580986
2280	50.245739 , 22.581090
2281	50.245197 , 22.581025
2282	50.244731 , 22.581201
2283	50.243967 , 22.581524
2284	50.243470 , 22.581650
2285	50.243286 , 22.581743
2286	50.242330 , 22.582823
2287	50.242102 , 22.583088
2288	50.240933 , 22.584481
2289	50.240529 , 22.584958
2290	50.240253 , 22.585040
2291	50.240004 , 22.585195
2292	50.239764 , 22.585500
2293	50.239677 , 22.585622
2294	50.239488 , 22.585895
2295	50.239343 , 22.586206
2296	50.239271 , 22.586621
2297	50.238900 , 22.587258
2298	50.238907 , 22.587413
2299	50.238819 , 22.587571
2300	50.238372 , 22.588127
2301	50.238183 , 22.587828
2302	50.237989 , 22.587310
2303	50.237140 , 22.587254
2304	50.236846 , 22.587108
2305	50.236194 , 22.588146
2306	50.235444 , 22.588108
2307	50.234726 , 22.588476
2308	50.234212 , 22.589578
2309	50.233902 , 22.590233
2310	50.233334 , 22.590992
2311	50.233137 , 22.591205
2312	50.232318 , 22.592081
2313	50.231925 , 22.592878
2314	50.231444 , 22.593456
2315	50.231019 , 22.594640
2316	50.230846 , 22.595043
2317	50.230464 , 22.594659
2318	50.230271 , 22.595384
2319	50.229757 , 22.596519
2320	50.229425 , 22.597660
2321	50.229194 , 22.597678
2322	50.228962 , 22.597946
2323	50.228975 , 22.598201

Nr pkt.	Współrzędne punktów załamania granicy w układzie WGS84
2324	50.229286 , 22.599396
2325	50.229287 , 22.599875
2326	50.229293 , 22.600754
2327	50.229300 , 22.602244
2328	50.229300 , 22.602797
2329	50.229295 , 22.605158
2330	50.229067 , 22.605367
2331	50.228588 , 22.606158
2332	50.228597 , 22.606300
2333	50.228287 , 22.606571
2334	50.227850 , 22.606880
2335	50.227277 , 22.607442
2336	50.227138 , 22.608093
2337	50.226872 , 22.608304
2338	50.226724 , 22.608466
2339	50.226379 , 22.608887
2340	50.225866 , 22.608192
2341	50.225625 , 22.608758
2342	50.225486 , 22.608590
2343	50.225477 , 22.608379
2344	50.225205 , 22.607495
2345	50.225038 , 22.606974
2346	50.224875 , 22.606733
2347	50.224459 , 22.606338
2348	50.224050 , 22.606344
2349	50.224031 , 22.606506
2350	50.224008 , 22.607705
2351	50.223130 , 22.607786
2352	50.222859 , 22.607795
2353	50.222832 , 22.607528
2354	50.222682 , 22.607113
2355	50.222396 , 22.606725
2356	50.221897 , 22.606853
2357	50.221632 , 22.606291
2358	50.221469 , 22.605744
2359	50.221345 , 22.605129
2360	50.221201 , 22.605020
2361	50.221252 , 22.604140
2362	50.221013 , 22.603828
2363	50.221101 , 22.603412
2364	50.220953 , 22.602974
2365	50.221151 , 22.602570
2366	50.220923 , 22.602065
2367	50.220562 , 22.602084
2368	50.220303 , 22.602149

Nr pkt.	Współrzędne punktów załamania granicy w układzie WGS84
2369	50.220187 , 22.602035
2370	50.220092 , 22.601811
2371	50.220443 , 22.601328
2372	50.220550 , 22.601248
2373	50.220336 , 22.600794
2374	50.220221 , 22.600513
2375	50.220208 , 22.600702
2376	50.220149 , 22.600775
2377	50.220007 , 22.600697
2378	50.219889 , 22.600451
2379	50.219770 , 22.600445
2380	50.219558 , 22.600485
2381	50.219544 , 22.600682
2382	50.219293 , 22.600654
2383	50.219247 , 22.600778
2384	50.218936 , 22.600780
2385	50.218629 , 22.600530
2386	50.218578 , 22.600203
2387	50.218523 , 22.600031
2388	50.218201 , 22.599643
2389	50.218166 , 22.599518
2390	50.218155 , 22.598964
2391	50.218241 , 22.598414
2392	50.218507 , 22.596546
2393	50.218505 , 22.595832
2394	50.218279 , 22.594757
2395	50.218200 , 22.594280
2396	50.218256 , 22.593894
2397	50.218375 , 22.593472
2398	50.218841 , 22.593043
2399	50.218901 , 22.592946
2400	50.219002 , 22.592452
2401	50.219058 , 22.591810
2402	50.219054 , 22.591689
2403	50.219103 , 22.591609
2404	50.219326 , 22.591254
2405	50.219684 , 22.591513
2406	50.220069 , 22.591928
2407	50.220190 , 22.591618
2408	50.220314 , 22.591693
2409	50.220406 , 22.591719
2410	50.220248 , 22.590993
2411	50.220242 , 22.590760
2412	50.220337 , 22.590372
2413	50.220577 , 22.589784

Nr pkt.	Współrzędne punktów załamania granicy w układzie WGS84
2414	50.221064 , 22.588801
2415	50.221198 , 22.587224
2416	50.221174 , 22.586744
2417	50.221096 , 22.586357
2418	50.221141 , 22.586188
2419	50.221624 , 22.585336
2420	50.221418 , 22.584980
2421	50.221530 , 22.584836
2422	50.221485 , 22.584747
2423	50.222051 , 22.584007
2424	50.222241 , 22.583941
2425	50.222357 , 22.583877
2426	50.222409 , 22.583986
2427	50.222484 , 22.583844
2428	50.222573 , 22.583754
2429	50.222914 , 22.583503
2430	50.223169 , 22.583245
2431	50.223343 , 22.582878
2432	50.223445 , 22.582741
2433	50.223424 , 22.582686
2434	50.223950 , 22.582202
2435	50.224995 , 22.581247
2436	50.225719 , 22.580582
2437	50.225546 , 22.580175
2438	50.226285 , 22.579961
2439	50.226862 , 22.579793
2440	50.227518 , 22.579589
2441	50.228616 , 22.579272
2442	50.228785 , 22.579243
2443	50.228822 , 22.579236
2444	50.229521 , 22.579114
2445	50.230089 , 22.579026
2446	50.231312 , 22.578835
2447	50.232537 , 22.578643
2448	50.232988 , 22.578567
2449	50.233682 , 22.578439
2450	50.233376 , 22.577389
2451	50.233071 , 22.576348
2452	50.232809 , 22.575852
2453	50.232348 , 22.575061
2454	50.232286 , 22.574501
2455	50.232172 , 22.574355
2456	50.231944 , 22.574135
2457	50.231671 , 22.574015
2458	50.231448 , 22.573722

Nr pkt.	Współrzędne punktów załamania granicy w układzie WGS84
2459	50.230466 , 22.572677
2460	50.230319 , 22.571984
2461	50.229592 , 22.571288
2462	50.229524 , 22.570672
2463	50.229325 , 22.569337
2464	50.229300 , 22.568645
2465	50.229110 , 22.567529
2466	50.228901 , 22.567611
2467	50.227843 , 22.568375
2468	50.227299 , 22.568912
2469	50.226993 , 22.569165
2470	50.226214 , 22.569759
2471	50.225965 , 22.569992
2472	50.225590 , 22.570358
2473	50.225368 , 22.570351
2474	50.225392 , 22.570326
2475	50.225366 , 22.570126
2476	50.225382 , 22.569879
2477	50.225507 , 22.568827
2478	50.225578 , 22.568349
2479	50.225715 , 22.567746
2480	50.225773 , 22.567122
2481	50.225774 , 22.566892
2482	50.225774 , 22.565999
2483	50.225730 , 22.565309
2484	50.225649 , 22.564063
2485	50.225611 , 22.563433
2486	50.225576 , 22.563033
2487	50.225444 , 22.562000
2488	50.225390 , 22.561389
2489	50.225253 , 22.560134
2490	50.225217 , 22.559713
2491	50.225198 , 22.559196
2492	50.225128 , 22.557744
2493	50.225099 , 22.557426
2494	50.225135 , 22.557360
2495	50.226048 , 22.555870
2496	50.226922 , 22.554439
2497	50.227044 , 22.554191
2498	50.227906 , 22.551905
2499	50.227951 , 22.551748
2500	50.228688 , 22.548290
2501	50.228807 , 22.547847
2502	50.229450 , 22.546002
2503	50.229660 , 22.544801

Nr pkt.	Współrzędne punktów załamania granicy w układzie WGS84
2504	50.229700 , 22.544654
2505	50.229735 , 22.544528
2506	50.229833 , 22.543670
2507	50.229936 , 22.543264
2508	50.230292 , 22.542660
2509	50.230352 , 22.542565
2510	50.230428 , 22.542453
2511	50.231043 , 22.541267
2512	50.231509 , 22.540336
2513	50.231596 , 22.540039
2514	50.231786 , 22.539292
2515	50.231865 , 22.539024
2516	50.231912 , 22.538762
2517	50.231926 , 22.538468
2518	50.232017 , 22.537581
2519	50.232026 , 22.537101
2520	50.232026 , 22.536750
2521	50.232039 , 22.536394
2522	50.232076 , 22.536136
2523	50.232314 , 22.535340
2524	50.232360 , 22.535145
2525	50.232438 , 22.534695
2526	50.232522 , 22.533218
2527	50.232561 , 22.532952
2528	50.232652 , 22.532701
2529	50.233011 , 22.532084
2530	50.233618 , 22.531171
2531	50.233828 , 22.530849
2532	50.234179 , 22.530409
2533	50.234605 , 22.530109
2534	50.234885 , 22.529748
2535	50.236165 , 22.527954
2536	50.236603 , 22.527087
2537	50.236935 , 22.526635
2538	50.237396 , 22.526110
2539	50.237967 , 22.525446
2540	50.238671 , 22.524590
2541	50.239172 , 22.523968
2542	50.239824 , 22.522886
2543	50.240018 , 22.522584
2544	50.240184 , 22.522297
2545	50.240399 , 22.521938
2546	50.240575 , 22.521397
2547	50.240635 , 22.520971
2548	50.240578 , 22.520084

Nr pkt.	Współrzędne punktów załamania granicy w układzie WGS84
2549	50.240503 , 22.519215
2550	50.240533 , 22.518932
2551	50.240688 , 22.518683
2552	50.241598 , 22.517878
2553	50.241887 , 22.517440
2554	50.242338 , 22.516423
2555	50.242834 , 22.515183
2556	50.242873 , 22.515092
2557	50.243077 , 22.514474
2558	50.243669 , 22.512195
2559	50.243857 , 22.511466
2560	50.244205 , 22.510051
2561	50.244730 , 22.507980
2562	50.244859 , 22.507522
2563	50.245135 , 22.507229
2564	50.245445 , 22.506872
2565	50.245491 , 22.506796
2566	50.245945 , 22.506243
2567	50.246029 , 22.506224
2568	50.246125 , 22.506113
2569	50.246459 , 22.505660
2570	50.246734 , 22.505240
2571	50.247032 , 22.504812
2572	50.247229 , 22.504551
2573	50.247494 , 22.504281
2574	50.247653 , 22.504226
2575	50.247955 , 22.504167
2576	50.248566 , 22.504073
2577	50.249257 , 22.504018
2578	50.249916 , 22.503919
2579	50.249979 , 22.503896
2580	50.250082 , 22.503850
2581	50.250228 , 22.503699
2582	50.250342 , 22.503562
2583	50.250443 , 22.503503
2584	50.250530 , 22.503501
2585	50.250630 , 22.503553
2586	50.250805 , 22.503737
2587	50.251148 , 22.504142
2588	50.251748 , 22.504868
2589	50.252773 , 22.506114
2590	50.252911 , 22.506286
2591	50.253052 , 22.506440
2592	50.253437 , 22.506896
2593	50.253567 , 22.507073

Nr pkt.	Współrzędne punktów załamania granicy w układzie WGS84
2594	50.253710 , 22.507022
2595	50.253703 , 22.506939
2596	50.254639 , 22.506741
2597	50.255280 , 22.506648
2598	50.255823 , 22.506561
2599	50.255968 , 22.506482
2600	50.258355 , 22.504511
2601	50.259587 , 22.503493
2602	50.260309 , 22.502892
2603	50.260367 , 22.502898
2604	50.260924 , 22.503347
2605	50.261159 , 22.503513
2606	50.261919 , 22.504064
2607	50.262380 , 22.504436
2608	50.262430 , 22.504488
2609	50.263149 , 22.505152
2610	50.263839 , 22.504581
2611	50.263753 , 22.504502
2612	50.263996 , 22.503929
2613	50.264046 , 22.503806
2614	50.264182 , 22.503376
2615	50.264233 , 22.503352
2616	50.264267 , 22.503249
2617	50.264255 , 22.503138
2618	50.264359 , 22.502839
2619	50.264453 , 22.502535
2620	50.264546 , 22.502249
2621	50.264690 , 22.501761
2622	50.264808 , 22.501387
2623	50.265296 , 22.499785
2624	50.265394 , 22.499463
2625	50.265686 , 22.498549
2626	50.265809 , 22.498119
2627	50.266332 , 22.496427
2628	50.266451 , 22.495960
2629	50.267062 , 22.493958
2630	50.267244 , 22.493401
2631	50.267529 , 22.493833
2632	50.268258 , 22.494458
2633	50.268846 , 22.494605
2634	50.269033 , 22.494642
2635	50.269739 , 22.494365
2636	50.269820 , 22.494314
2637	50.270336 , 22.493870
2638	50.270439 , 22.493739

Nr pkt.	Współrzędne punktów załamania granicy w układzie WGS84
2639	50.270851 , 22.493158
2640	50.271226 , 22.492277
2641	50.271195 , 22.491734
2642	50.271599 , 22.492064
2643	50.272153 , 22.490907
2644	50.272604 , 22.489953
2645	50.272539 , 22.489861
2646	50.272594 , 22.489767
2647	50.273198 , 22.488644
2648	50.273277 , 22.488497
2649	50.273619 , 22.487735
2650	50.274079 , 22.486641
2651	50.274295 , 22.485948
2652	50.274380 , 22.485773
2653	50.274708 , 22.485533
2654	50.275668 , 22.484650
2655	50.276699 , 22.483695
2656	50.276678 , 22.481492
2657	50.276667 , 22.480132
2658	50.277255 , 22.479663
2659	50.277990 , 22.479128
2660	50.280386 , 22.478834
2661	50.281622 , 22.478685
2662	50.281922 , 22.478647
2663	50.282896 , 22.478513
2664	50.284016 , 22.478344
2665	50.284390 , 22.478282
2666	50.284308 , 22.473999
2667	50.284388 , 22.473849
2668	50.284464 , 22.473761
2669	50.284533 , 22.473657
2670	50.284758 , 22.473371
2671	50.287005 , 22.471577
2672	50.287124 , 22.471470
2673	50.287354 , 22.471203
2674	50.287938 , 22.470147
2675	50.288224 , 22.469608
2676	50.288467 , 22.469188
2677	50.288713 , 22.468794
2678	50.288769 , 22.468702
2679	50.289093 , 22.469465
2680	50.289251 , 22.470093
2681	50.289343 , 22.470758
2682	50.289488 , 22.471671
2683	50.289629 , 22.472119

Nr pkt.	Współrzędne punktów załamania granicy w układzie WGS84
2684	50.289790 , 22.473117
2685	50.290074 , 22.474811
2686	50.291245 , 22.474587
2687	50.292159 , 22.474423
2688	50.295122 , 22.473846
2689	50.296826 , 22.473509
2690	50.297787 , 22.473316
2691	50.299027 , 22.473075
2692	50.300288 , 22.472832
2693	50.300015 , 22.470393
2694	50.299857 , 22.468813
2695	50.299839 , 22.468278
2696	50.299819 , 22.467147
2697	50.299831 , 22.466450
2698	50.300881 , 22.467111
2699	50.301542 , 22.467551
2700	50.301776 , 22.467712
2701	50.301809 , 22.467724
2702	50.302058 , 22.467911
2703	50.302064 , 22.468086
2704	50.302155 , 22.468163
2705	50.302209 , 22.467989
2706	50.302995 , 22.468526
2707	50.304229 , 22.469342
2708	50.304836 , 22.469750
2709	50.305429 , 22.470132
2710	50.306357 , 22.470739
2711	50.307668 , 22.471607
2712	50.308622 , 22.472251
2713	50.309151 , 22.472643
2714	50.309457 , 22.472821
2715	50.310782 , 22.474054
2716	50.311418 , 22.474685
2717	50.311908 , 22.475177
2718	50.312099 , 22.475376
2719	50.312446 , 22.475810
2720	50.313137 , 22.476789
2721	50.313445 , 22.477078
2722	50.313817 , 22.477395
2723	50.314790 , 22.478032
2724	50.315308 , 22.478293
2725	50.315696 , 22.478424
2726	50.316333 , 22.478576
2727	50.316677 , 22.478655
2728	50.316894 , 22.478691

Nr pkt.	Współrzędne punktów załamania granicy w układzie WGS84
2729	50.316922 , 22.478724
2730	50.317874 , 22.479197
2731	50.318338 , 22.479430
2732	50.318900 , 22.479563
2733	50.319399 , 22.479670
2734	50.320655 , 22.479851
2735	50.321893 , 22.480031
2736	50.322812 , 22.480219
2737	50.322905 , 22.480247
2738	50.323319 , 22.480493
2739	50.323575 , 22.480843
2740	50.323731 , 22.481078
2741	50.325319 , 22.483839
2742	50.326486 , 22.485868
2743	50.327607 , 22.487819
2744	50.328033 , 22.488513
2745	50.328136 , 22.488427
2746	50.328390 , 22.488562
2747	50.328664 , 22.488643
2748	50.328939 , 22.488606
2749	50.329188 , 22.488452
2750	50.329415 , 22.488292
2751	50.329602 , 22.488093
2752	50.329883 , 22.487723
2753	50.330038 , 22.487554
2754	50.330175 , 22.487360
2755	50.330470 , 22.487006
2756	50.330669 , 22.486874
2757	50.330732 , 22.486308
2758	50.330626 , 22.486089
2759	50.330577 , 22.485560
2760	50.330555 , 22.485161
2761	50.330475 , 22.484054
2762	50.330466 , 22.483794
2763	50.330424 , 22.483306
2764	50.330344 , 22.482208
2765	50.330343 , 22.482079
2766	50.330323 , 22.481922
2767	50.330232 , 22.480662
2768	50.330213 , 22.480252
2769	50.330182 , 22.479939
2770	50.330126 , 22.479191
2771	50.329782 , 22.474441
2772	50.329458 , 22.469941
2773	50.329378 , 22.468786

Nr pkt.	Współrzędne punktów załamania granicy w układzie WGS84
2774	50.329220 , 22.466605
2775	50.329206 , 22.466470
2776	50.329087 , 22.464825
2777	50.329004 , 22.463579
2778	50.328982 , 22.462750
2779	50.329017 , 22.462442
2780	50.329121 , 22.462179
2781	50.329365 , 22.461787
2782	50.330290 , 22.460495
2783	50.331533 , 22.458796
2784	50.331869 , 22.458332
2785	50.332749 , 22.457128
2786	50.333483 , 22.456117
2787	50.334066 , 22.455294
2788	50.334181 , 22.455023
2789	50.334265 , 22.454736
2790	50.335018 , 22.450762
2791	50.335071 , 22.451738
2792	50.335162 , 22.453910
2793	50.335175 , 22.454059
2794	50.336123 , 22.452713
2795	50.337093 , 22.451499
2796	50.337669 , 22.450670
2797	50.338056 , 22.450196
2798	50.338512 , 22.449628
2799	50.338861 , 22.449125
2800	50.339025 , 22.448951
2801	50.339148 , 22.448879
2802	50.339358 , 22.448797
2803	50.339496 , 22.448681
2804	50.339871 , 22.448305
2805	50.340280 , 22.448031
2806	50.340493 , 22.447611
2807	50.340898 , 22.447025
2808	50.341375 , 22.446567
2809	50.341421 , 22.446477
2810	50.342013 , 22.445657
2811	50.342758 , 22.444777
2812	50.343885 , 22.443464
2813	50.345080 , 22.445808
2814	50.346197 , 22.447988
2815	50.347478 , 22.450528
2816	50.348619 , 22.452768
2817	50.349335 , 22.454170
2818	50.350113 , 22.455702

Nr pkt.	Współrzędne punktów załamania granicy w układzie WGS84
2819	50.350252 , 22.455379
2820	50.350390 , 22.455188
2821	50.350631 , 22.454843
2822	50.350883 , 22.454480
2823	50.351868 , 22.453065
2824	50.353431 , 22.450827
2825	50.353562 , 22.450636
2826	50.355498 , 22.447862
2827	50.356139 , 22.446942
2828	50.357001 , 22.445683
2829	50.357230 , 22.445349
2830	50.357185 , 22.445276
2831	50.356491 , 22.443878
2832	50.356055 , 22.443023
2833	50.355395 , 22.441731
2834	50.355223 , 22.441404
2835	50.354922 , 22.440794
2836	50.354375 , 22.439720
2837	50.354328 , 22.439611
2838	50.354049 , 22.439056
2839	50.353986 , 22.438918
2840	50.357980 , 22.438547
2841	50.359158 , 22.438451
2842	50.360327 , 22.438366
2843	50.361554 , 22.438268
2844	50.362795 , 22.438179
2845	50.362827 , 22.437255
2846	50.362660 , 22.435799
2847	50.362715 , 22.435773
2848	50.363185 , 22.435792
2849	50.364383 , 22.435832
2850	50.365626 , 22.435865
2851	50.366369 , 22.435896
2852	50.366839 , 22.435906
2853	50.368047 , 22.435958
2854	50.368509 , 22.435976
2855	50.369016 , 22.437017
2856	50.369093 , 22.437446
2857	50.369174 , 22.437617
2858	50.369814 , 22.438911
2859	50.370327 , 22.439909
2860	50.370951 , 22.441131
2861	50.371402 , 22.441153
2862	50.372624 , 22.441211
2863	50.373869 , 22.441272

Nr pkt.	Współrzędne punktów załamania granicy w układzie WGS84
2864	50.374806 , 22.441316
2865	50.375974 , 22.441335
2866	50.377084 , 22.441379
2867	50.378339 , 22.441432
2868	50.379929 , 22.441439
2869	50.380868 , 22.439453
2870	50.382703 , 22.435578
2871	50.383405 , 22.434094
2872	50.384324 , 22.432138

Nr pkt.	Współrzędne punktów załamania granicy w układzie WGS84
2873	50.385422 , 22.429826
2874	50.385489 , 22.429365
2875	50.385846 , 22.427012
2876	50.386211 , 22.424833
2877	50.385645 , 22.422619
2878	50.385149 , 22.422430
2879	50.384723 , 22.421600
2880	50.384952 , 22.420696
2881	50.385166 , 22.419512

Nr pkt.	Współrzędne punktów załamania granicy w układzie WGS84
2882	50.385971 , 22.418279
2883	50.386163 , 22.417639
2884	50.386372 , 22.417450
2885	50.386866 , 22.416985
2886	50.387802 , 22.416113
2887	50.389262 , 22.414017
2888	50.390266 , 22.412734
2889	50.390941 , 22.411870
2890	50.391027 , 22.410358

Nr pkt.	Współrzędne punktów załamania granicy w układzie WGS84
2891	50.391837 , 22.408136
2892	50.392661 , 22.405856
2893	50.393268 , 22.406270
2894	50.394045 , 22.406788
2895	50.394099 , 22.406632
2896	50.394442 , 22.405448
2897	50.396655 , 22.407037

Uwagi:

1. Pomędzy punktem Nr 1 i punktem Nr 2245 oraz pomiędzy punktem Nr 2790 i punktem Nr 2897 granica Kuryłowskiego Obszaru Chronionego Krajobrazu pokrywa się z zachodnią, północną i wschodnią granicą administracyjną Gminy Kuryłówka.
2. Pomędzy punktem Nr 2245 a punktem Nr 2493 granica Kuryłowskiego Obszaru Chronionego Krajobrazu pokrywa się ze wschodnią granicą administracyjną Gminy Leżajsk.
3. Pomędzy punktem Nr 2106 a punktem Nr 2493 granica Kuryłowskiego Obszaru Chronionego Krajobrazu pokrywa się z zachodnią granicą Sieniawskiego Obszaru Chronionego Krajobrazu.